

Front and Rear Seat Belt Retractors and Buckles

Front Seat Belt Retractors (A)

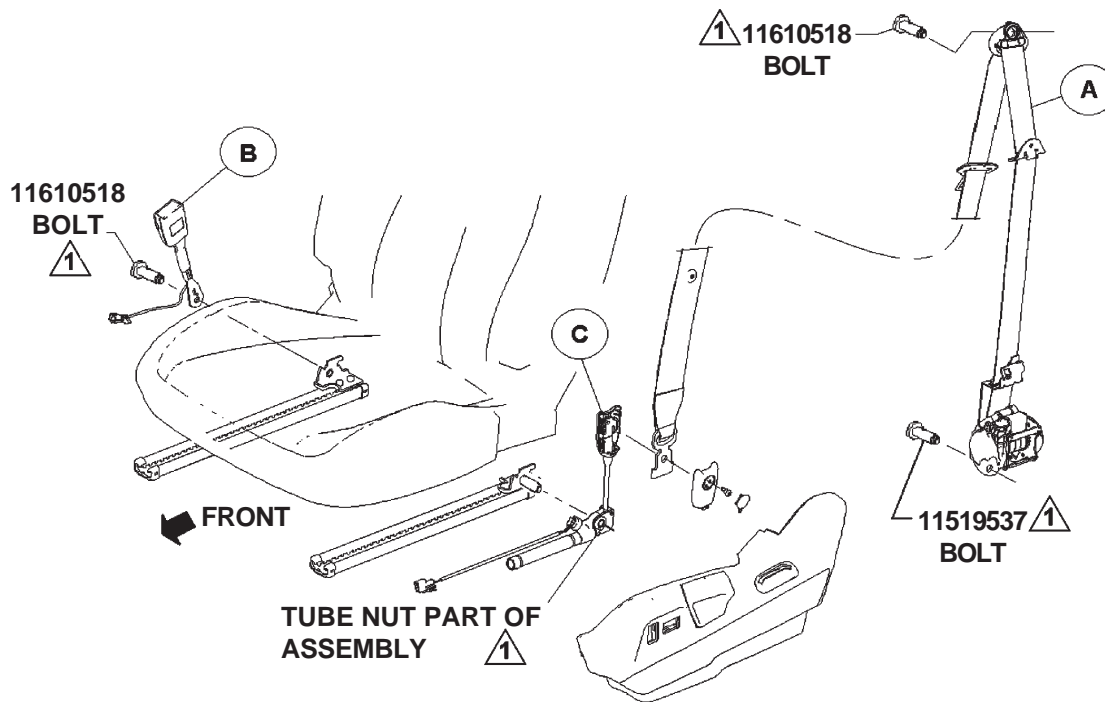
1. Remove upper and lower pillar trim to access anchor fasteners.
2. Disconnect lower anchor plate from tensioner assembly (C).
3. Disconnect lower wire harness. Before removal, carefully observe seat belt routing.
4. Remove damaged seatbelt and install new seat belt in same position as old.
5. Tighten anchor fasteners to specified torques (\triangle), connect wire harness and re-install pillar trim.

Front Seat Belt Buckles (B) and Retractor Tensioner (C)

Remove lower seat trim to access anchor fasteners.

Disconnect wire harness and remove damaged part.

Install new part in same position as old and tighten fasteners to specified torques (\triangle).



LEFT HAND SHOWN
RIGHT HAND SIMILAR

\triangle 1 40-50 NM

Front and Rear Seat Belt Retractors and Buckles 7L 1TLA00 IR 29AP09 PART NO. **19209433** SHEET **1** OF **6**

ALL INFORMATION WITHIN ABOVE BORDER TO BE PRINTED EXACTLY AS SHOWN ON 8.5x11 WHITE 16 POUND NON-BOND RECYCLABLE PAPER. PRINT ON BOTH SIDES, EXCLUDING TEMPLATES. TO BE INITIALIZED IN ACCORDANCE WITH GMSPO SPECIFICATIONS.

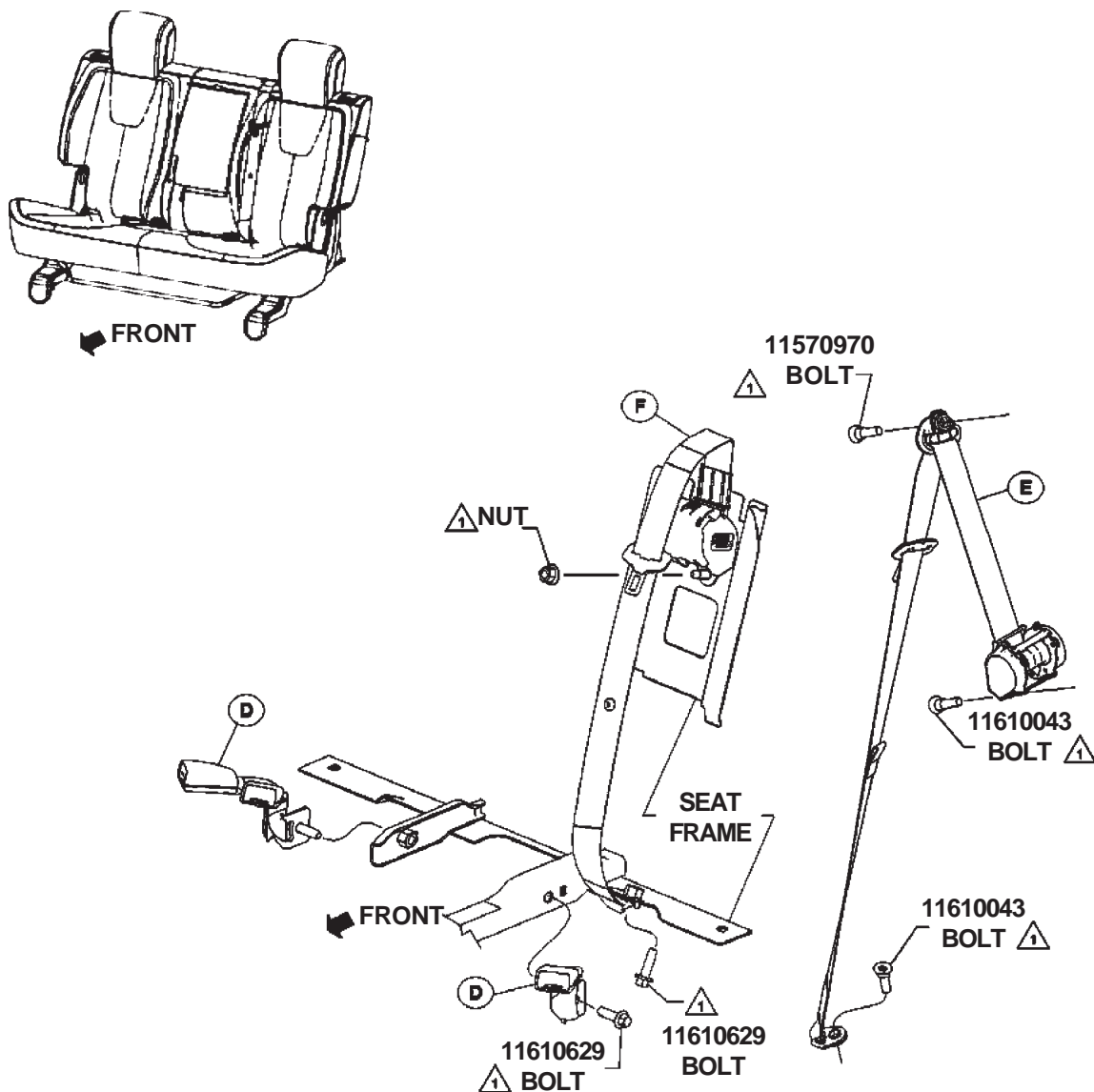
DATE	REVISION	AUTH	DR
29AP09	Initial Release-AI Jefferson		

TITLE	
INSTALLATION INSTRUCTIONS	
Front and Rear Seat Belt Retractors and Buckles	
7L 1TLA00	
PART NO.	19209433
SHEET	1 OF 6

Front and Rear Seat Belt Retractors and Buckles

Rear Seat Belt Buckles (D) and Retractors (E,F)

1. Remove upper and lower pillar trim to access outer retractor (E) anchor fasteners.
2. Remove center seat cover to access center retractor (F) anchors.
3. Before removal, carefully observe all seat belt routing.
4. Remove damaged part and install new part in same position as old.
5. Tighten anchor fasteners to specified torques (△).



△ 1 40-50 NM

Front and Rear Seat Belt Retractors and Buckles 7L 1TLA00 IR 29AP09 PART NO. **19209433** SHEET **2** OF **6**

ALL INFORMATION WITHIN ABOVE BORDER TO BE PRINTED EXACTLY AS SHOWN ON 8.5x11 WHITE 16 POUND NON-BOND RECYCLABLE PAPER. PRINT ON BOTH SIDES, EXCLUDING TEMPLATES. TO BE UNITIZED IN ACCORDANCE WITH GMSPO SPECIFICATIONS.

DATE	REVISION	AUTH	DR

TITLE	
INSTALLATION INSTRUCTIONS	
Front and Rear Seat Belt Retractors and Buckles	
7L 1TLA00	
PART NO.	SHEET 2 OF 6
19209433	2 OF 6

Enrouleurs et boucles de ceintures de sécurité avant et arrière

Enrouleurs de ceintures de sécurité avant (A)

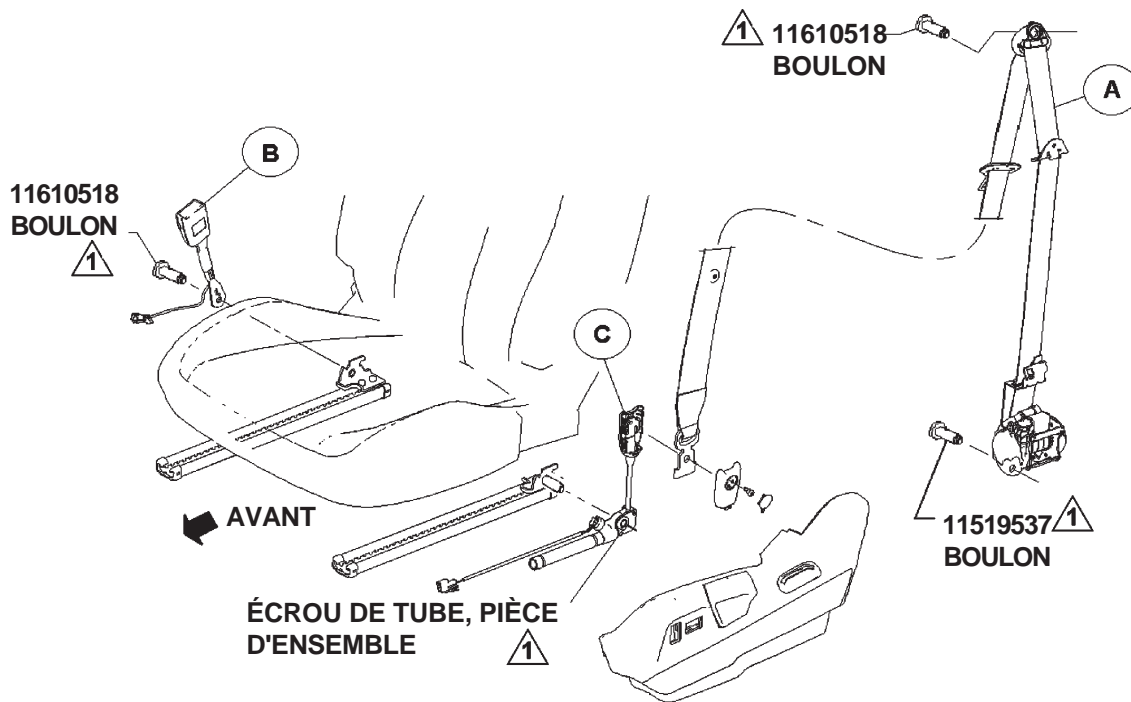
1. Retirer la garniture supérieure et inférieure afin d'accéder aux ancrages.
2. Débrancher la plaque d'ancrage inférieure du tendeur (C).
3. Débrancher le faisceau de câblage inférieur. Avant la dépose, observer attentivement l'acheminement de la ceinture de sécurité.
4. Retirer la ceinture de sécurité endommagée et installer une ceinture neuve à la même position que la ceinture d'origine.
5. Serrer les ancrages aux couples de serrage spécifiés (\triangle), brancher le faisceau de câblage et réinstaller la garniture du pied.

Boucles de ceinture de sécurité avant (B) et tendeur d'enrouleur (C)

Retirer la garniture de siège inférieure pour accéder aux ancrages.

Débrancher le faisceau de câblage et retirer la pièce endommagée.

Installer la pièce neuve dans la position d'origine et serrer les attaches aux couples de serrage spécifiés (\triangle).



CÔTÉ GAUCHE ILLUSTRÉ
CÔTÉ DROIT SIMILAIRE

\triangle 1 40 À 50 NM

Front and Rear Seat Belt Retractors and Buckles 7L 1TLA00 IR 29AP09 PART NO. **19209433** SHEET **3** OF **6**

ALL INFORMATION WITHIN ABOVE BORDER TO BE PRINTED EXACTLY AS SHOWN ON 8.5x11 WHITE 16 POUND NON-BOND RECYCLABLE PAPER. PRINT ON BOTH SIDES, EXCLUDING TEMPLATES. TO BE UNITIZED IN ACCORDANCE WITH GMSPO SPECIFICATIONS.

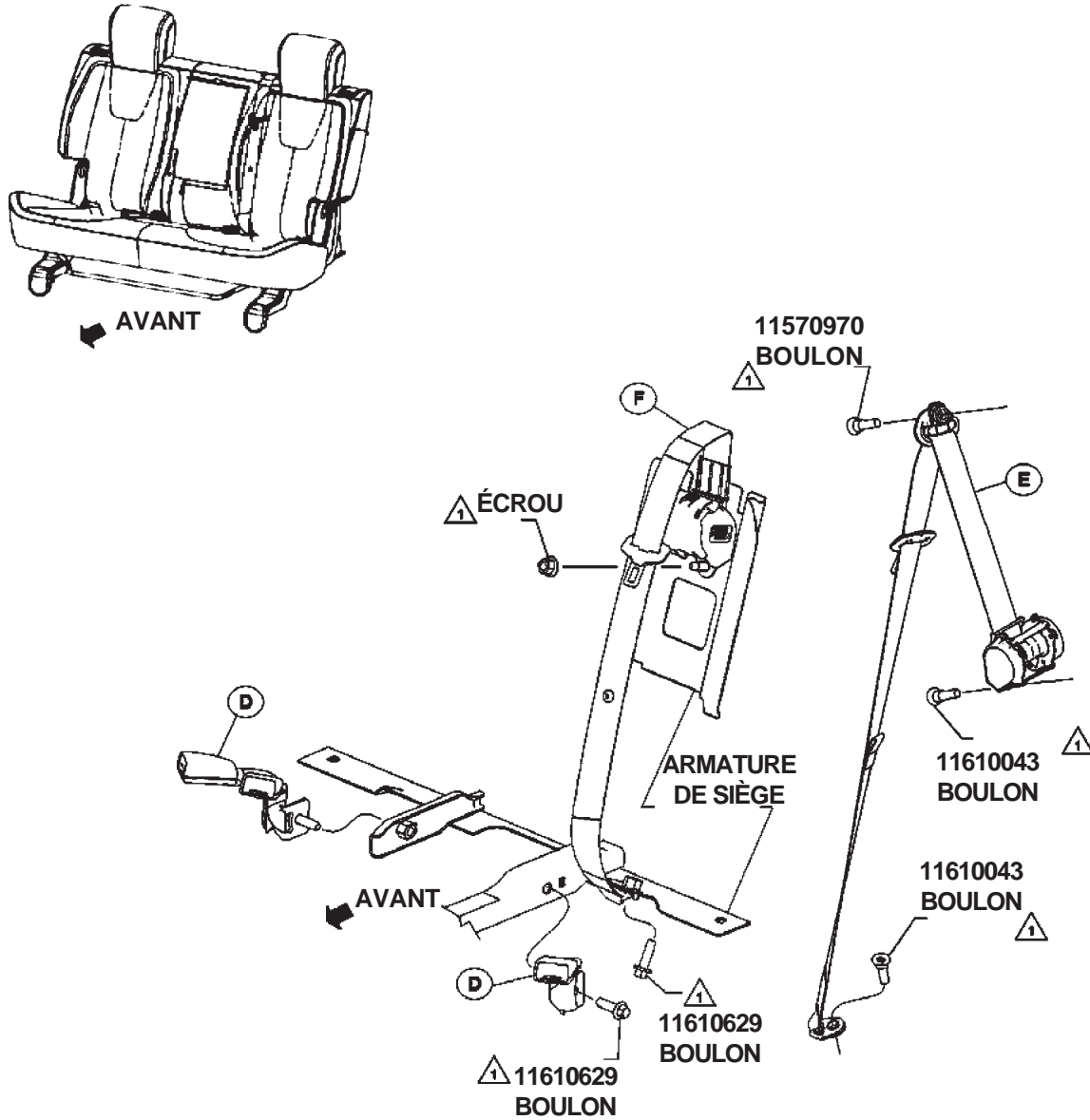
DATE	REVISION	AUTH	DR

TITLE	
INSTALLATION INSTRUCTIONS	
Front and Rear Seat Belt Retractors and Buckles	
7L 1TLA00	
PART NO.	SHEET
19209433	3 OF 6

Enrouleurs et boucles de ceintures de sécurité avant et arrière

Boucles (D) et enrouleurs (E, F) de ceintures de sécurité arrière

1. Retirer la garniture supérieure et inférieure du pied afin d'accéder aux ancrages (E) de l'enrouleur extérieur.
2. Retirer le garnissage de siège central pour accéder aux ancrages (F) de l'enrouleur central.
3. Avant la dépose, observer attentivement l'acheminement de la ceinture de sécurité.
4. Retirer la pièce endommagée et installer une pièce neuve au même emplacement que la pièce d'origine.
5. Serrer les ancrages au couple de serrage spécifié (△).



△ 1 40 À 50 NM

Front and Rear Seat Belt Retractors and Buckles 7L 1TLA00 IR 29AP09 PART NO. **19209433** SHEET **4** OF **6**

ALL INFORMATION WITHIN ABOVE BORDER TO BE PRINTED EXACTLY AS SHOWN ON 8.5x11 WHITE 16 POUND NON-BOND RECYCLABLE PAPER. PRINT ON BOTH SIDES, EXCLUDING TEMPLATES. TO BE UNITIZED IN ACCORDANCE WITH GMSPO SPECIFICATIONS.

DATE	REVISION	AUTH	DR

TITLE	
INSTALLATION INSTRUCTIONS	
Front and Rear Seat Belt Retractors and Buckles	
7L 1TLA00	
PART NO.	19209433
SHEET	4 OF 6

Hebillas y retractores del cinturón de seguridad delantero y trasero

Retradores del cinturón de seguridad delantero (A)

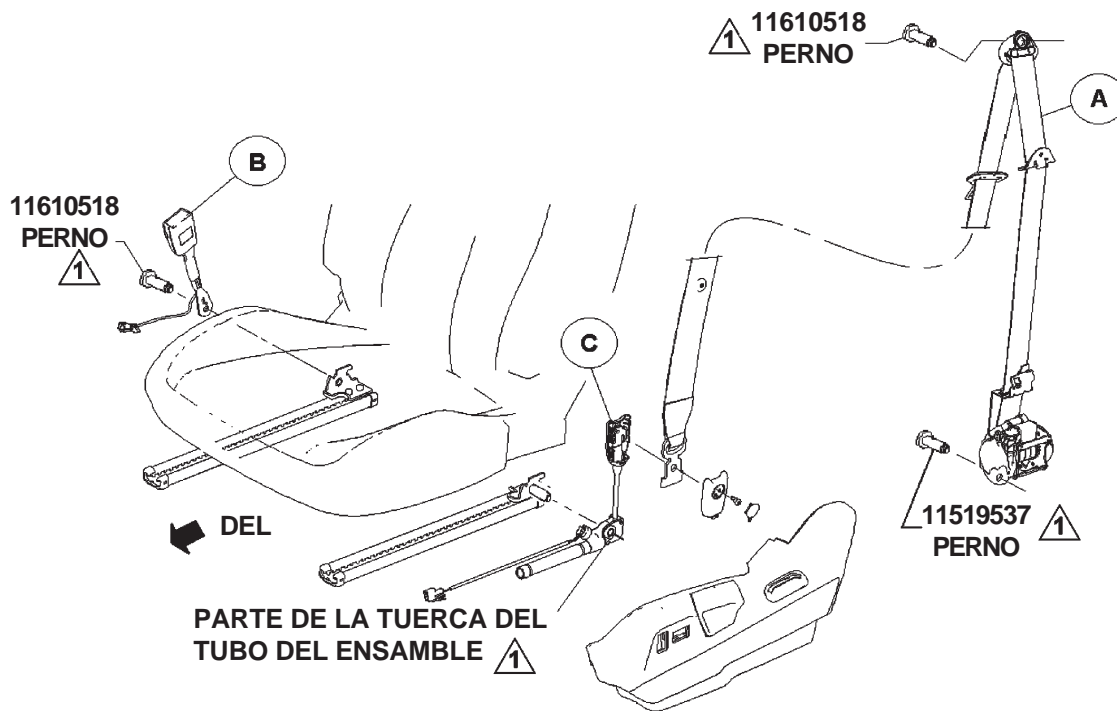
1. Desinstale el acabado del pilar superior e inferior para obtener acceso a los afianzadores de anclaje.
2. Desconecte la placa de anclaje inferior del ensamble del tensor (C).
3. Desconecte el arnés de cable inferior. Antes de retirarlo, observe cuidadosamente el enrutamiento del cinturón de seguridad.
4. Retire los cinturones de seguridad dañados e instale nuevos cinturones de seguridad en la misma posición que los usados.
5. Apriete los afianzadores de anclaje según el torque especificado (△), conecte el arnés de cables y vuelva a instalar el acabado del pilar.

Hebillas del cinturón de seguridad delantero (B) y tensor del retractor (C)

Desinstale el acabado del asiento inferior para obtener acceso a los afianzadores de anclaje.

Desconecte el arnés de cables y retire las partes dañadas.

Instale las nuevas partes en la misma posición que las originales y apriete los afianzadores según el torque especificado (△).



SE MUESTRA EL LADO IZQUIERDO
EL LADO DERECHO ES SIMILAR

△ 1 40-50 NM

Front and Rear Seat Belt Retractors and Buckles 7L 1TLA00 IR 29AP09 PARTNO. 19209433 SHEET 5 OF 6

ALL INFORMATION WITHIN ABOVE BORDER TO BE PRINTED EXACTLY AS SHOWN ON 8.5x11 WHITE 16 POUND NON-BOND RECYCLABLE PAPER. PRINT ON BOTH SIDES, EXCLUDING TEMPLATES. TO BE UNITIZED IN ACCORDANCE WITH GMSPO SPECIFICATIONS.

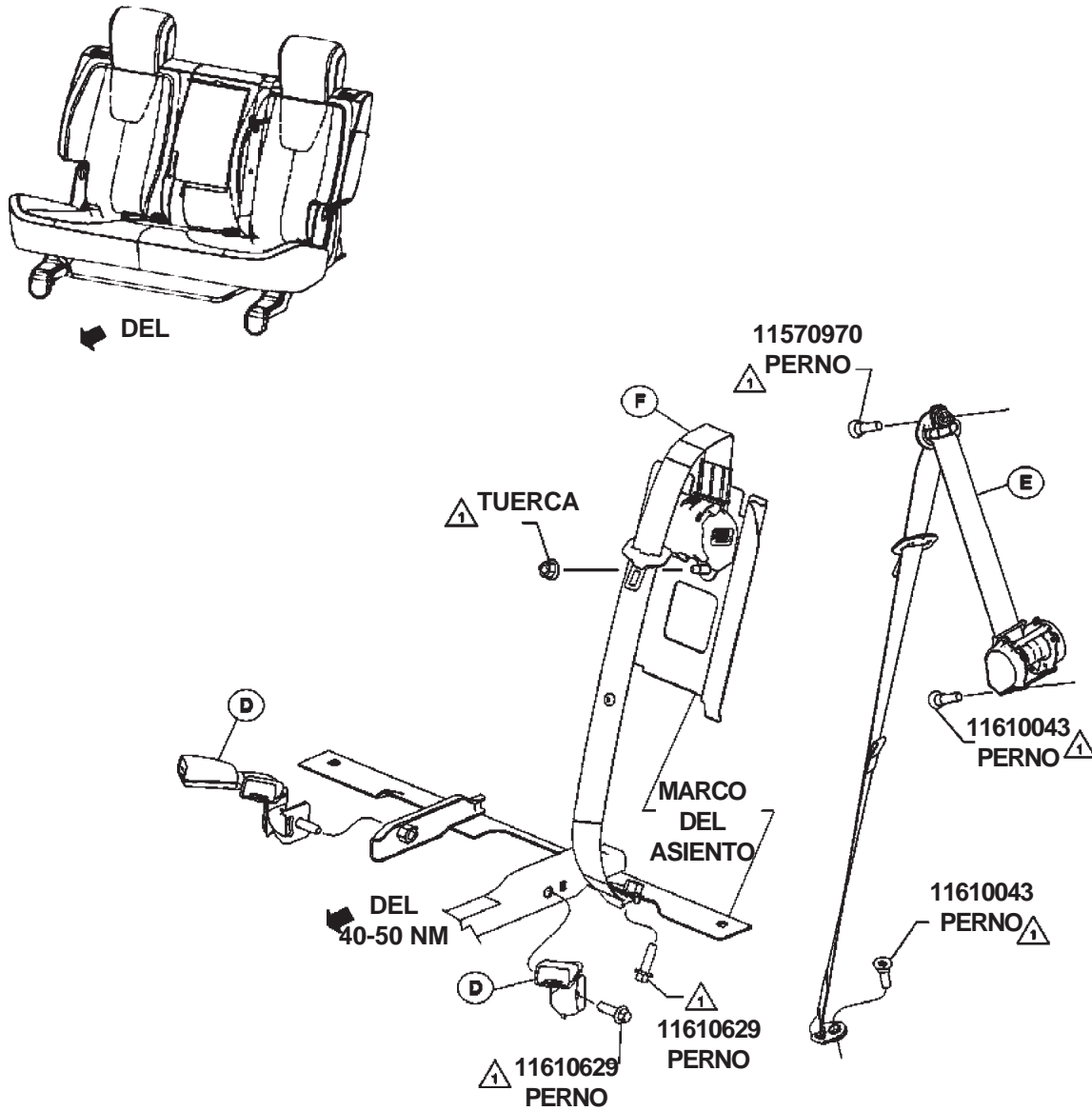
DATE	REVISION	AUTH	DR

INSTALLATION INSTRUCTIONS	
Front and Rear Seat Belt Retractors and Buckles	
7L 1TLA00	
PARTNO. 19209433	SHEET 5 OF 6

Hebillas y retractores del cinturón de seguridad delantero y trasero

Hebillas (D) y retractores (E,F) del cinturón de seguridad trasero

1. Desinstale el acabado del pilar superior e inferior para obtener acceso a los afianzadores de anclaje del retractor exterior (E).
2. Retire la cubierta del asiento central para obtener acceso a los anclajes del retractor superior (F).
3. Antes de retirarlo, observe cuidadosamente todo el enrutamiento del cinturón de seguridad.
4. Desinstale la parte dañada e instale la parte nueva en la misma posición de la original.
5. Apriete los afianzadores de anclaje según el torque especificado (△).



Front and Rear Seat Belt Retractors and Buckles 7L 1TLA00 IR 29AP09 PARTNO. **19209433** SHEET **6** OF **6**

ALL INFORMATION WITHIN ABOVE BORDER TO BE PRINTED EXACTLY AS SHOWN ON 8.5x11 WHITE 16 POUND NON-BOND RECYCLABLE PAPER. PRINT ON BOTH SIDES, EXCLUDING TEMPLATES. TO BE UNITIZED IN ACCORDANCE WITH GMSPO SPECIFICATIONS.

DATE	REVISION	AUTH	DR

TITLE	
INSTALLATION INSTRUCTIONS	
Front and Rear Seat Belt Retractors and Buckles	
7L 1TLA00	
PARTNO.	19209433
SHEET	6 OF 6