



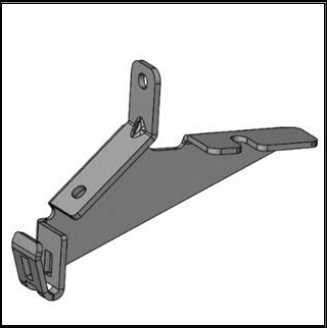



# Assist Step Kit Installation

## [Installation Instructions Part Number](#)

23231249

### Kit Contents

Description	Qty:
<p>Step Assist Assembly - LH</p>  	1
<p>Step Assist Assembly - RH</p>  	1
<p>Support Bracket</p>  	8

**Description**

**Qty:**

Door Seal – Driver



1

Door Seal – Passenger



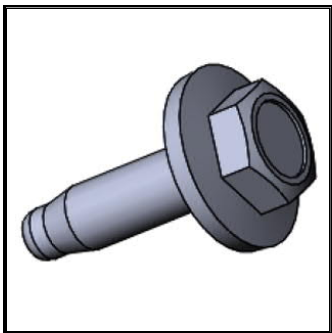
1

Hex Riv Nut M6



12

M6 Bolt

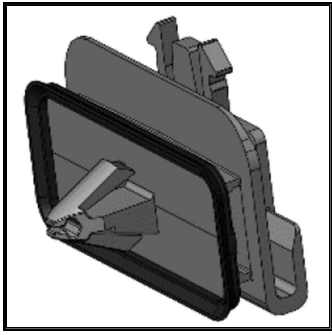


12

**Description**

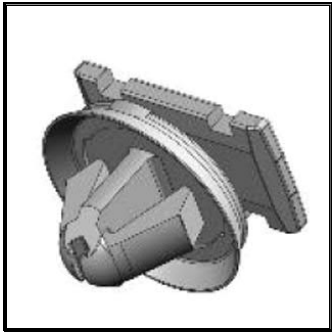
**Qty:**

Large Retaining Clip



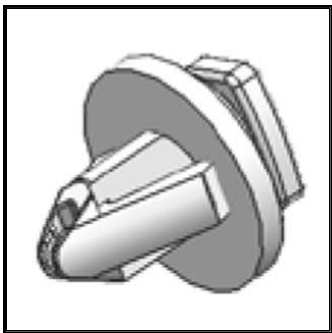
4

Retaining Clip With Cup Washer



20

Retaining Clip With Flat Washer



8

Square Head Bolt M8

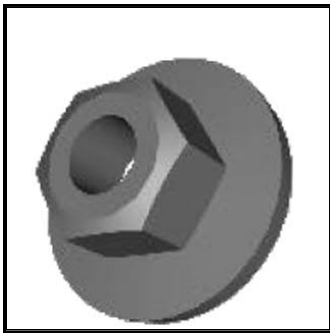


8

**Description**

**Qty:**

SEMS Washer Nut M8



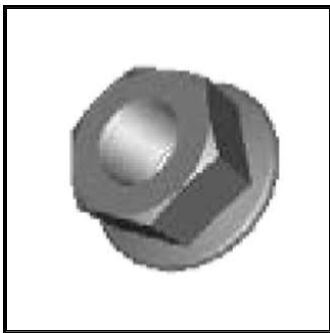
8

Carriage Bolt M8



4

Serrated Flange Hex Nut M8

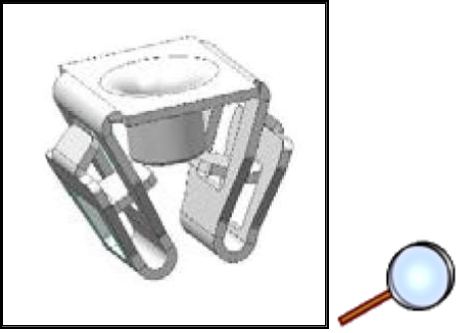


4

Torx Screw



8

Description	Qty:
Push In Nut 	2
Installation Instructions	1

### Tools Required

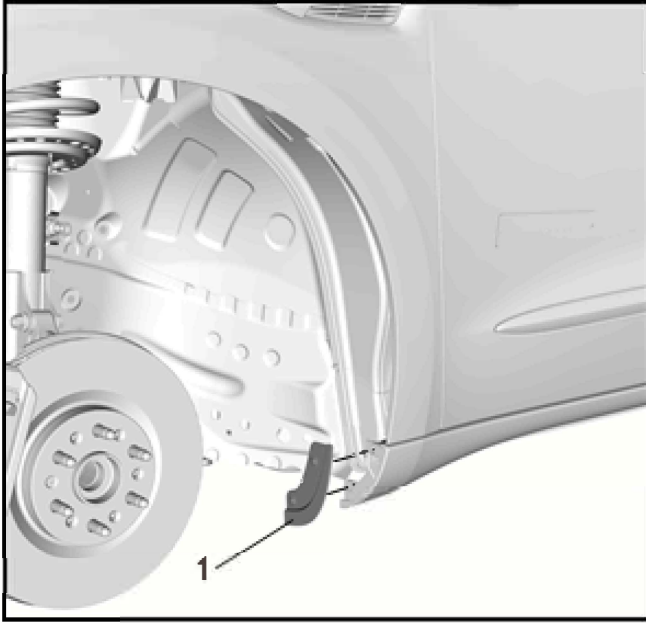
T15 Driver  
 10mm Socket  
 13mm Socket  
 Torque Wrench  
 Trim Removal Tool  
 Hammer  
 M6 Riv Nut Tool  
 Straight Edge

### Note:

- Carefully read and understand instructions and components completely before beginning installation.
- Wash/clean vehicle exterior thoroughly before beginning installation.

### Procedure

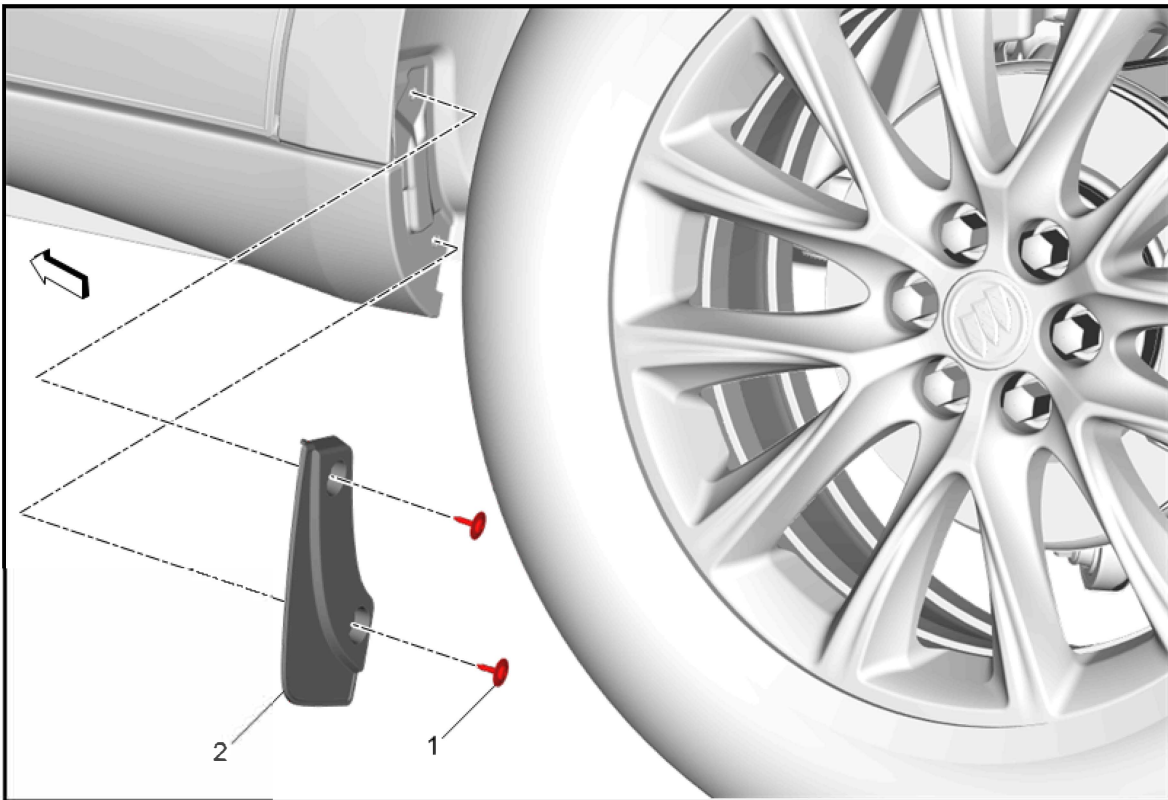
1. Place RH assist step on passenger side, and place LH assist step on the driver's side.
2. Suitably raise and support the vehicle. Refer to [Lifting and Jacking the Vehicle](#) in Vehicle Service Manual.
3. Remove the front and rear wheel and tire assemblies. Refer to [Tire and Wheel Removal and Installation](#) in Vehicle Service Manual.



**Note:** If vehicle does not have rocker panel molding installed, skip to Step 10.

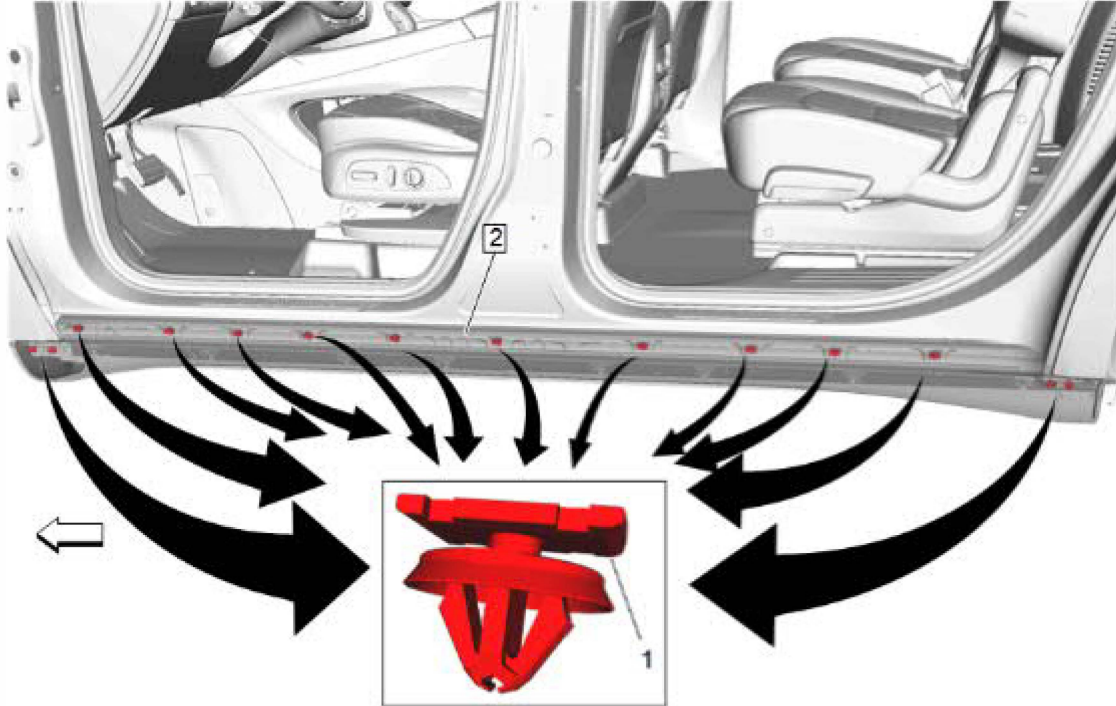
4. Remove the screws and the front tire air deflector (1).

**Note:** Discard the screws.



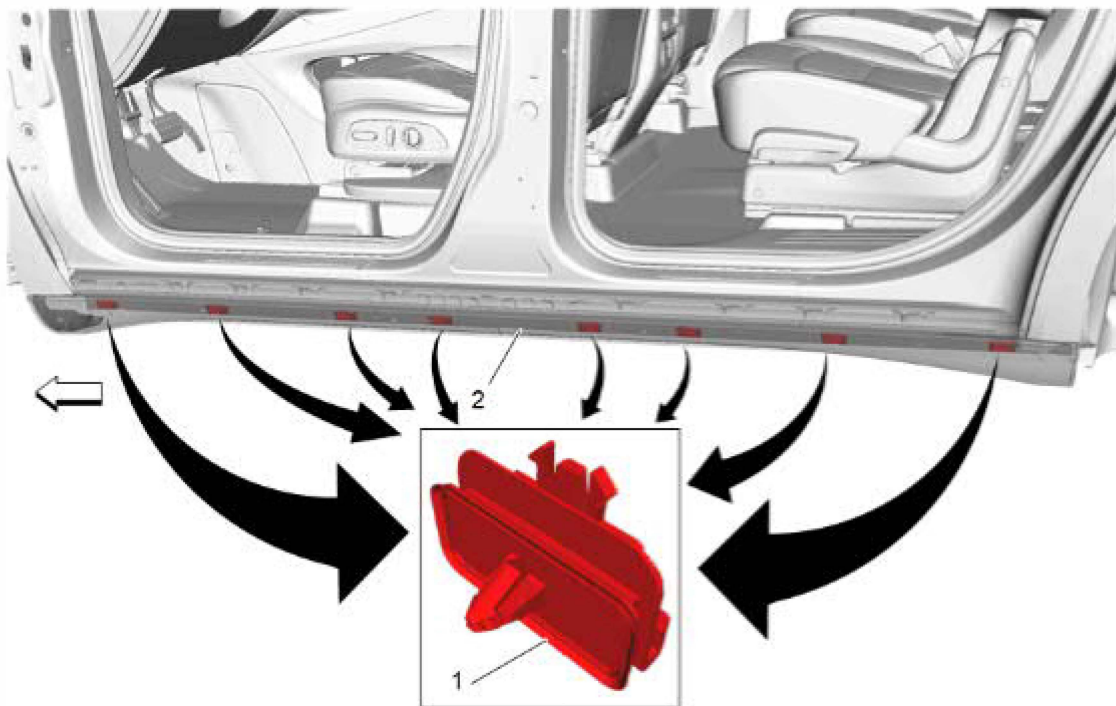
5. Remove the screws (1) and the rear tire deflector (2).

**Note:** Discard the screws.

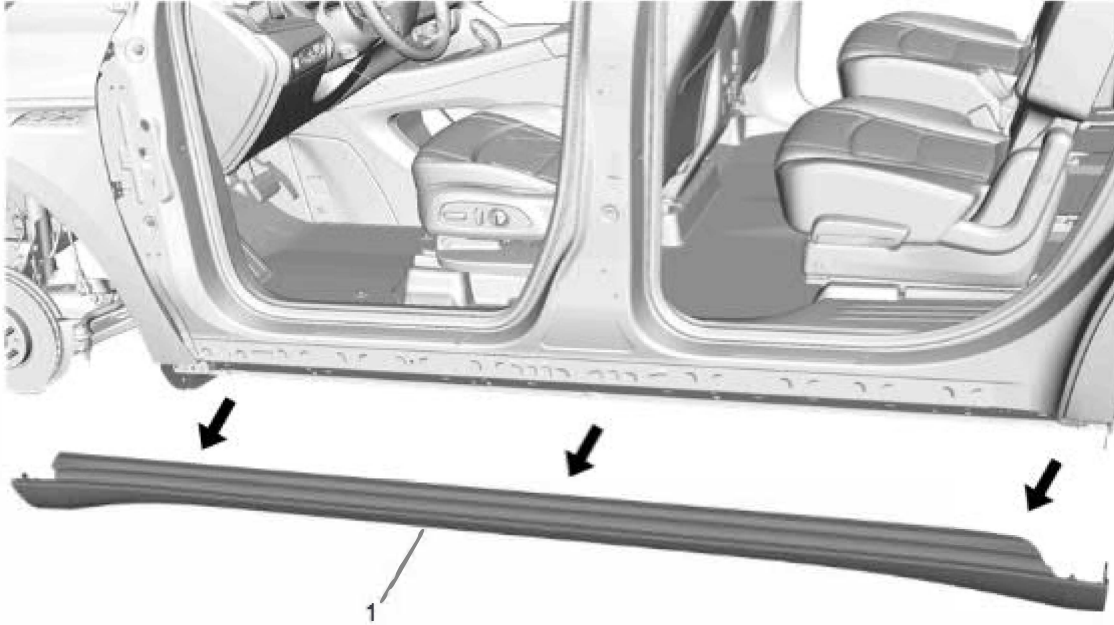


6. Open the front and rear side doors.

7. Using the trim removal tool, release the 14 retainers (1) from the top edge, pull out the rocker panel molding (2) away from the body side outer panel.



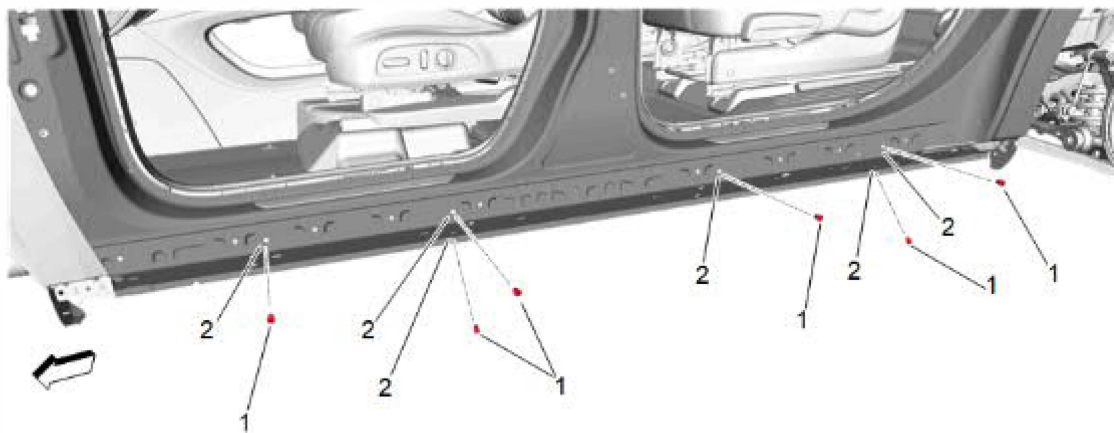
8. Using the trim removal tool, release the 8 retaining clips (1) from the bottom edge of rocker panel molding (2). **Note: Use caution not to damage PEP Sensor or wiring hidden behind rocker panel molding.**



**Note:** Remove and discard any plastic retainers that remain after the removal of the rocker panel molding.

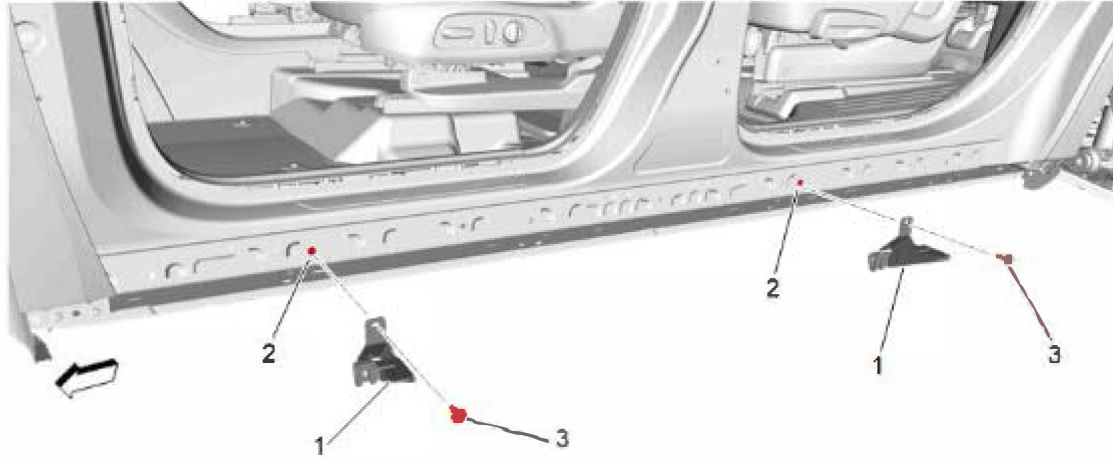
**Note:** Use a suitable tool to straighten out any sheet metal that was deformed while removing the rocker panel molding and plastic retainers.

9. Pull down on rocker panel molding (1) from the body side outer panel and remove.



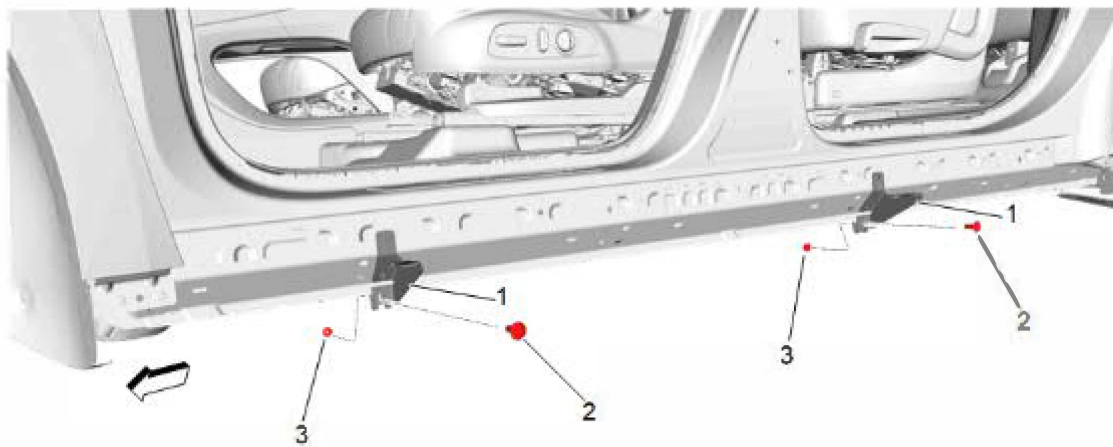
**Note:** M6 Riv Nuts are to be installed in the "Hex" holes on the vehicle.

10. Using the M6 Riv Nut tool, install the 6 M6 Riv Nuts (1) to the corresponding hole locations (2) in rocker panel.

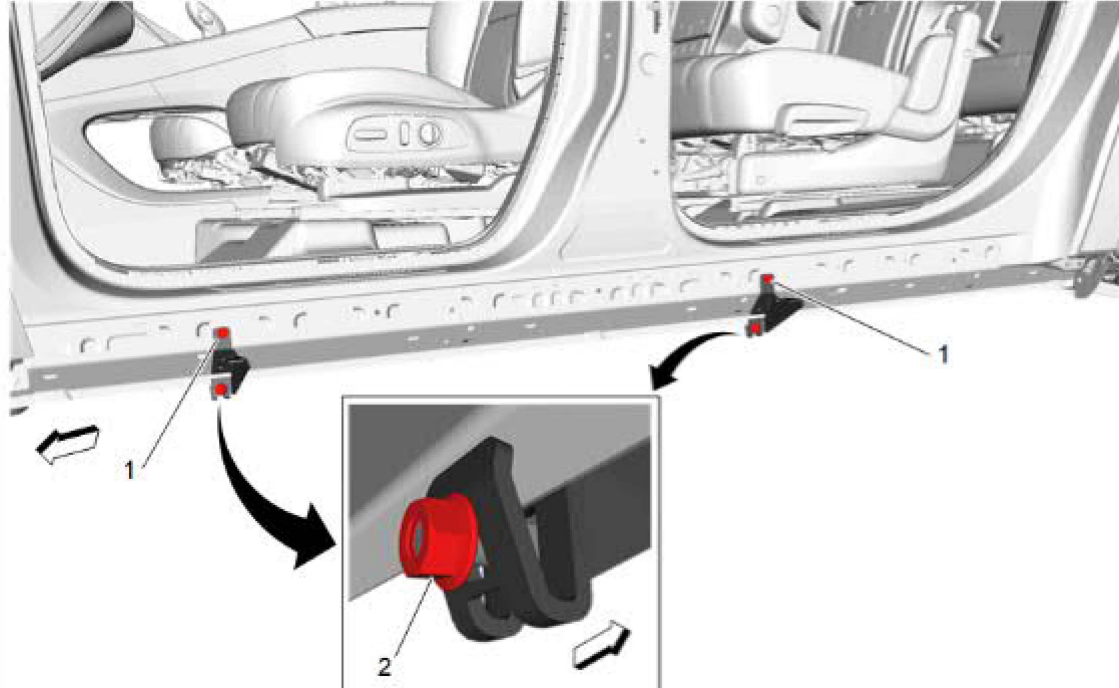


**Caution:** Use the correct fastener in the correct location. Replacement fasteners must be the correct part number for that application. Do not use paints, lubricants, or corrosion inhibitors on fasteners, or fastener joint surfaces, unless specified. These coatings affect fastener torque and joint clamping force and may damage the fastener. Use the correct tightening sequence and specifications when installing fasteners in order to avoid damage to parts and systems. When using fasteners that are threaded directly into plastic, use extreme care not to strip the mating plastic part(s). Use hand tools only, and do not use any kind of impact or power tools. Fastener should be hand tightened, fully seated, and not stripped.

11. Install two of the brackets (1) to the first and third bracket locations where only 1 riv nut was used (2). Loosely install the M6 bolt (3) to the riv nut securing the bracket.

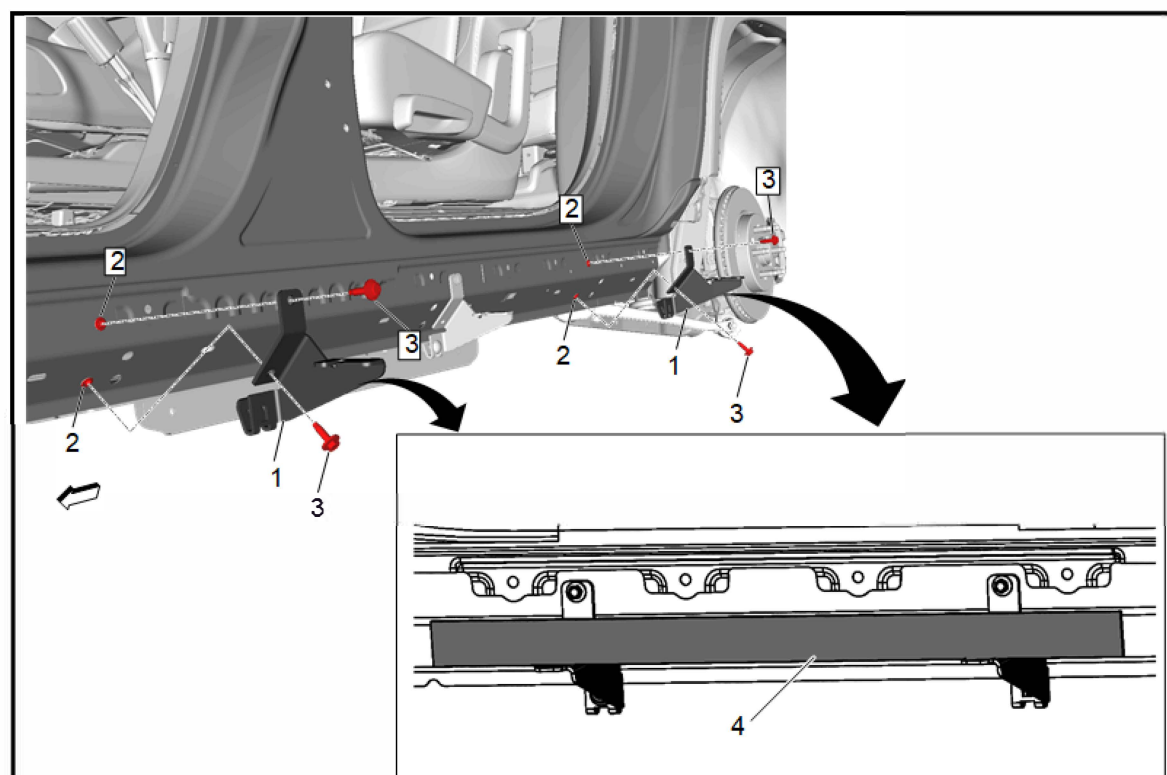


12. Verify bracket (1) is perpendicular to vehicle frame. Once perpendicular, secure the bottom of the bracket using an M8 carriage bolt (2) and serrated flange hex nut (3). Hand tighten the M8 serrated flange nut to ensure bracket cannot rotate.



12.1. **Tighten** the M6 bolt (1) into the riv nut to 11.5 N.m (8.5 lb ft).

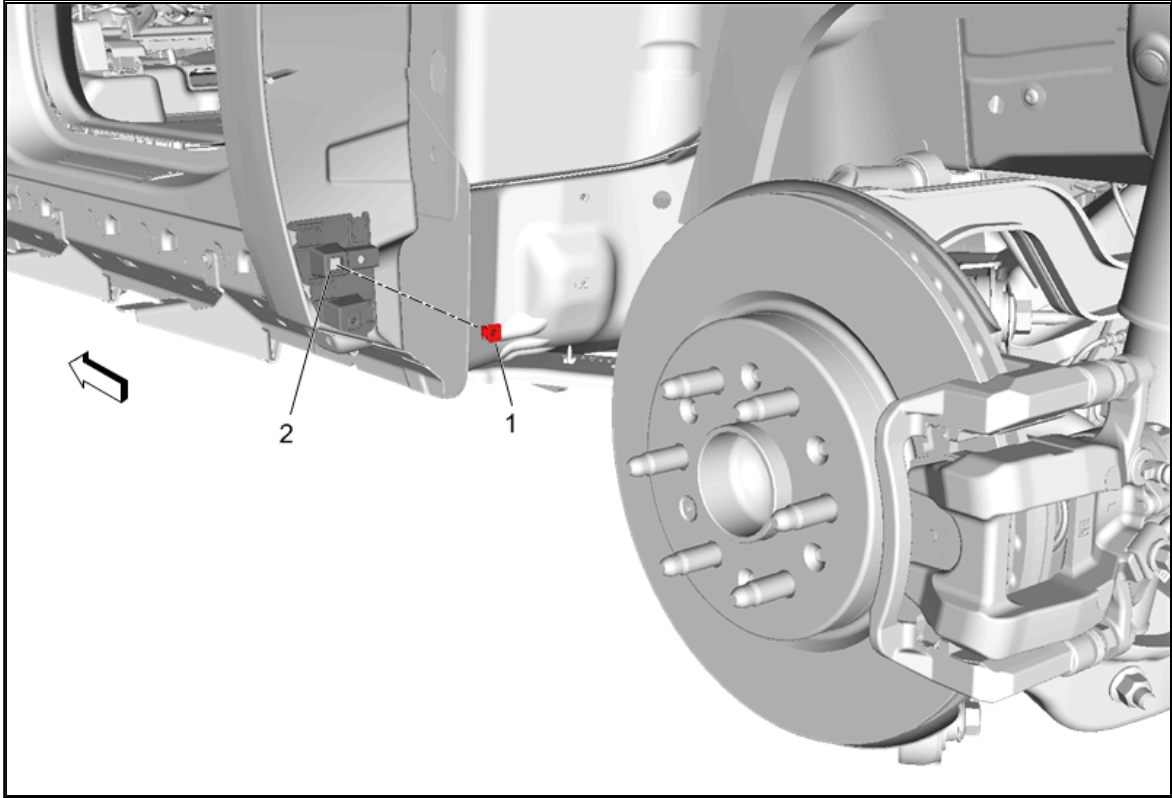
12.2. **Tighten** the M8 serrated flange hex nut (2) to 25 N.m (18.5 lb ft).



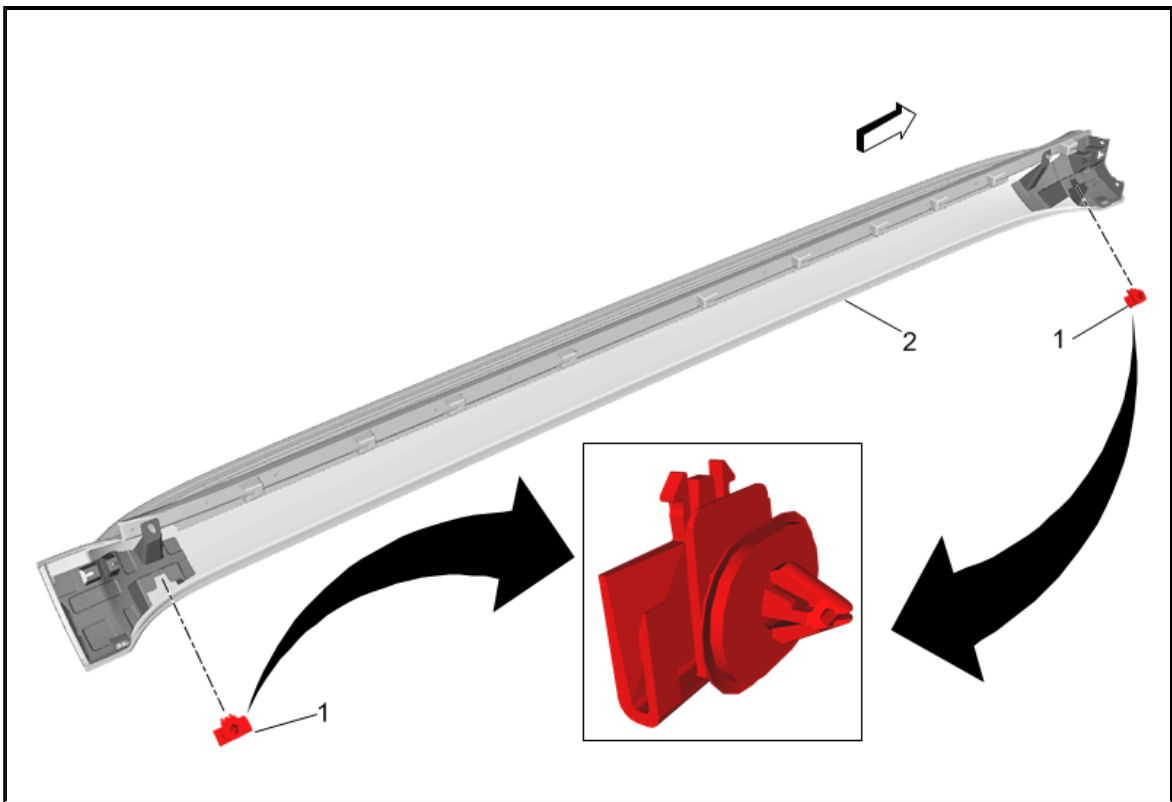
13. Using 4 M6 bolts (3), install remaining 2 brackets (1) to the riv nut (2).

14. After brackets are installed, use a straight edge (4) to verify top surface of brackets are parallel. Adjust brackets as needed.

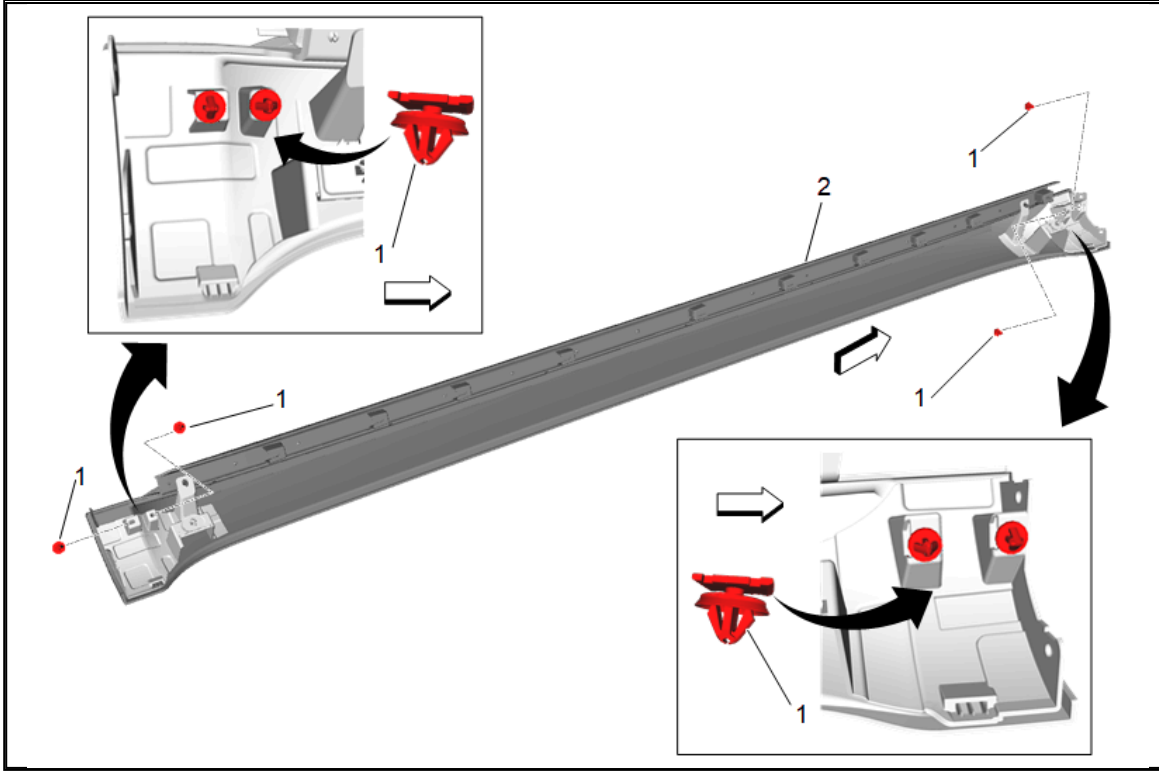
**Tighten** the M6 bolts to 11.5 N m (8.5 lb ft).



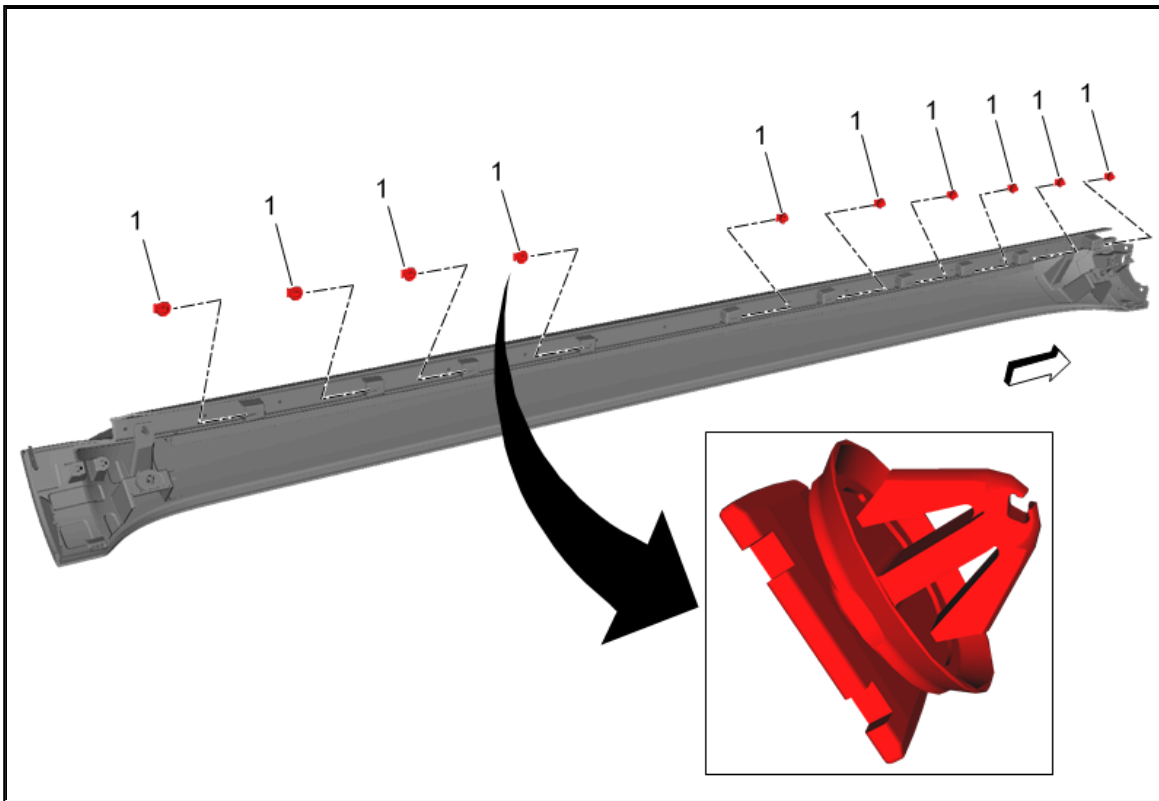
15. If push-in nut is not installed at the rear tire location (2), install push-in nut (1) supplied in kit.



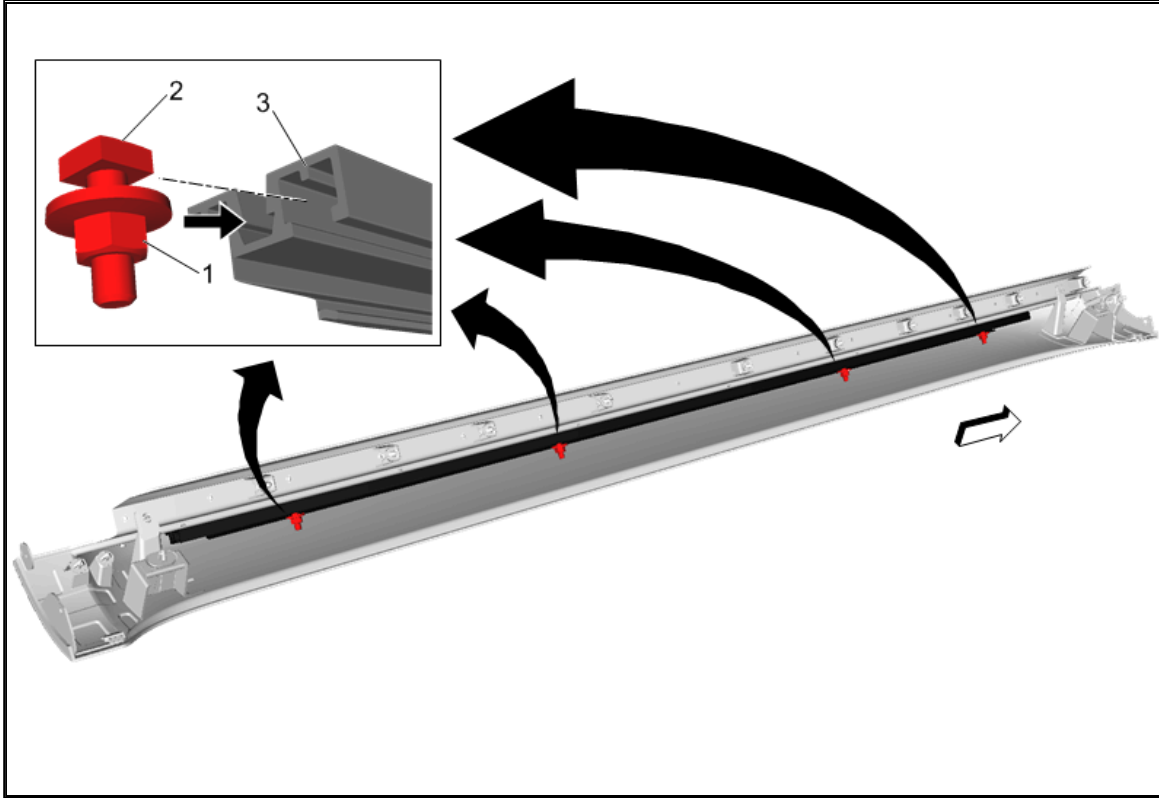
16. Install large retaining clip (1) (Qty: 2) on assist step assembly (2) at location shown.



17. Install retaining clips with flat washer (1) (Qty:4) on assist step assembly (2) at location shown. Washers should be off set 90° from each other.

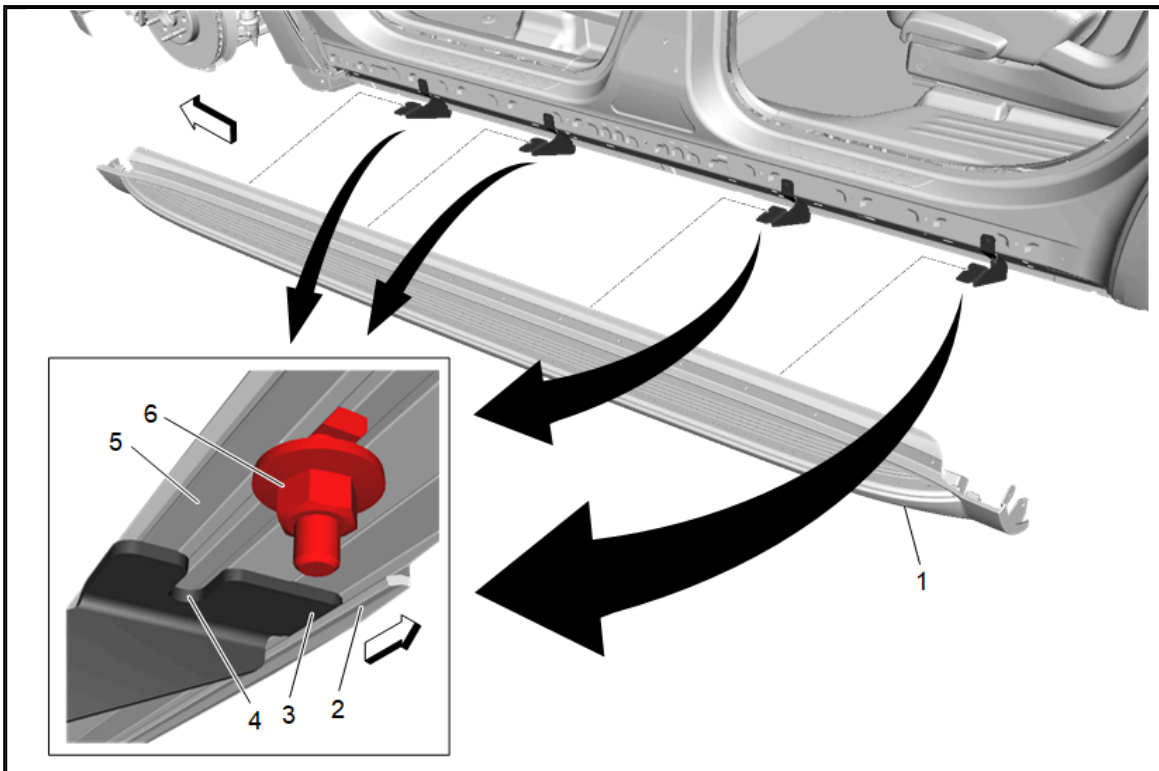


18. Install retaining clip with cup washer (1) (Qty:10) on assist step assembly at location shown.



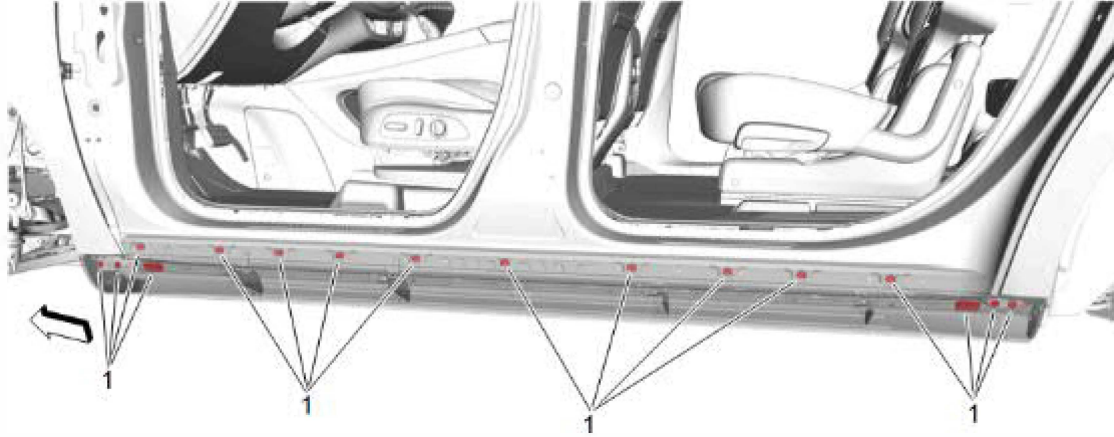
19. Loosely install M8 SEMS washer nuts (1) (Qty:4) onto the M8 square head bolt (2) (Qty:4). Slide the head of the bolt into extrusion (3) on assist step assembly at the rough locations shown.

**Note:** Do not tighten at this time.

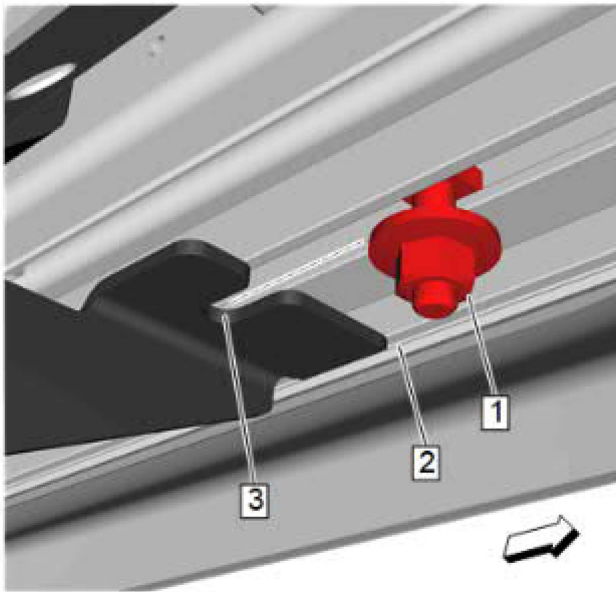


**Note:** Each M8 square head bolt and M8 SEMS washer nut assembly (6) must be located on the slotted side of the corresponding bracket (4). **DO NOT TIGHTEN FASTENERS.** Assembly must be loose to allow adjustment fore/aft or assembly may be damaged.

20. With the aid of an assistant, install assist step (1) by placing support extrusion (5) on brackets (3) and sliding inboard toward the vehicle making sure bracket is in the recessed channel (2).

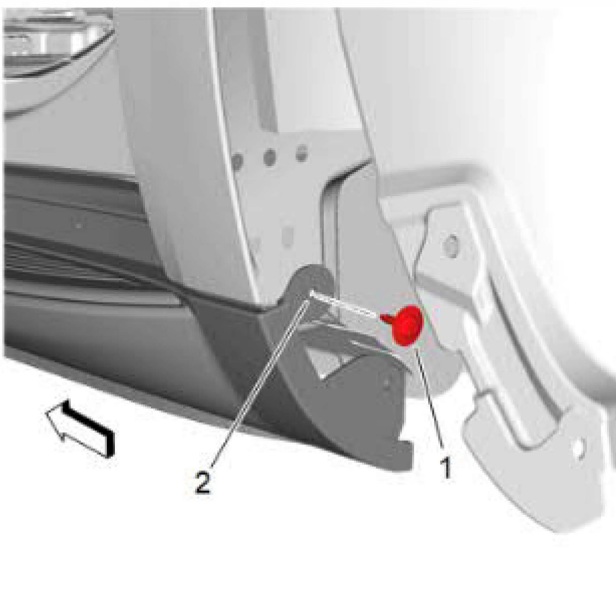


21. Push cladding at all attachment points (Qty:16) to engage all retention clips (1). Adjust step fore/aft as needed to align the clips. Ensure brackets maintain the position in the recessed channel in the support extrusion as shown in step 20.



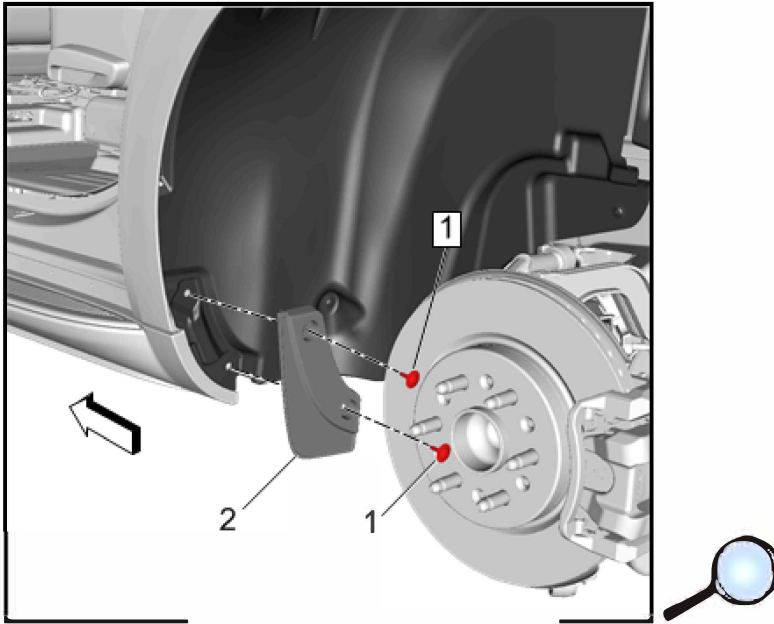
22. Slide M8 Square Head Bolt and M8 SEMS Washer Nut assembly (1) into slot on bracket (3) and tighten to 20 N.m (15 lb ft) (QTY: 4). Ensure brackets maintain the position in the recessed channel (2) in the support extrusion shown in step 20.

**Note:** If bottom edge of cladding prevents access to fasteners, pull cladding aside only enough to access fasteners and use caution not to permanently deform bottom edge of cladding.

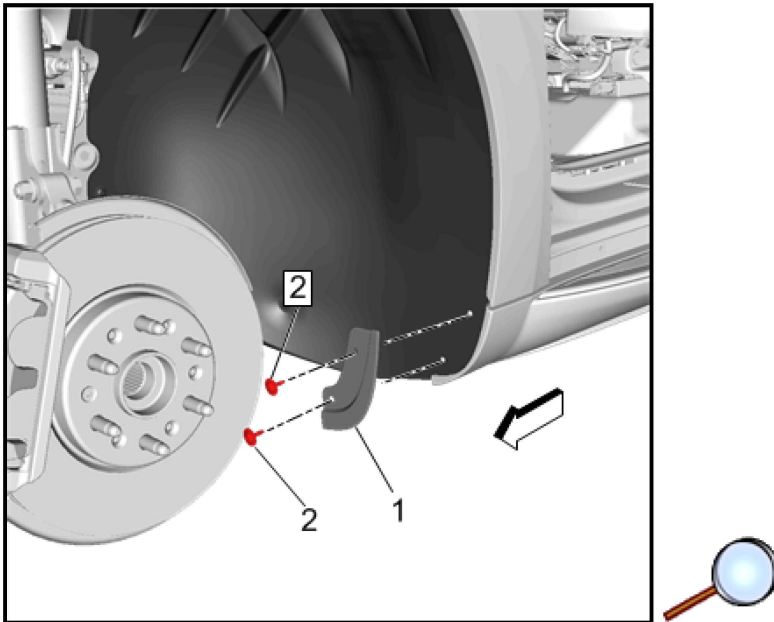


23. Secure the rear of the assist step (2) with the Torx fastener (1). **Tighten** the fastener to 2.5 N.m (22 lb in).

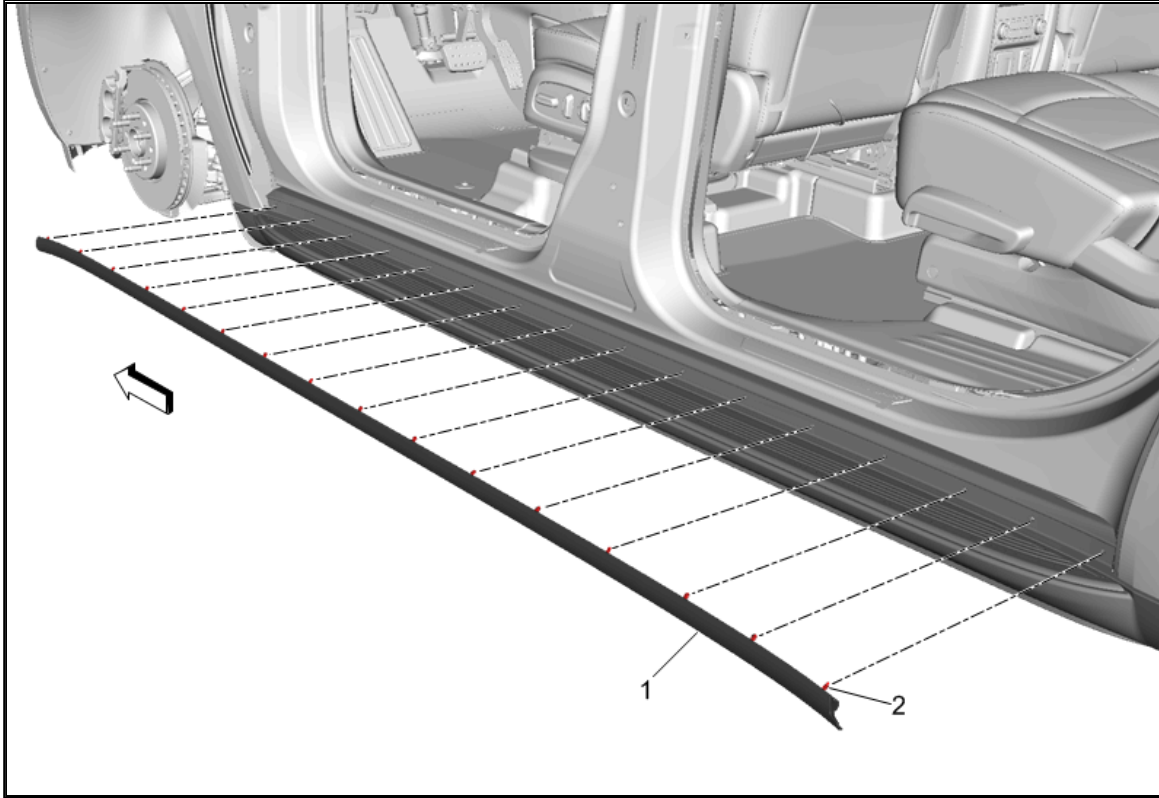
24. Reposition the rear wheel house panel.



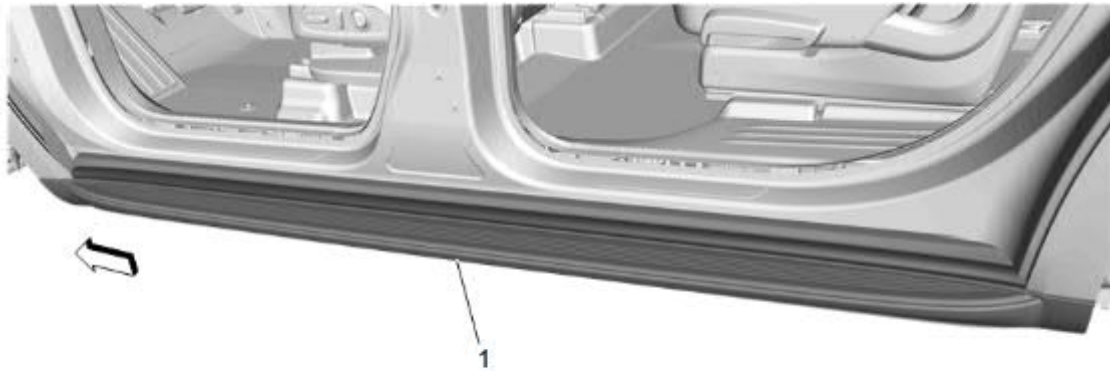
25. If rear tire air deflector was removed during Step 5, install rear tire air deflector (2) using provided Torx Screws (1) at rear of the Assist Step Assembly. If rear tire air deflector was not removed, install provided Torx Screws (1) at rear of the Assist Step Assembly. **Tighten** the screws to 2.5 N m (22 lb in).



26. If front tire air deflector was removed during Step 4, install front tire air deflector (1) using provided Torx Screws (2) at front of the Assist Step Assembly. If front tire air deflector was not removed, install provided Torx Screws (2) at front of the Assist Step Assembly. **Tighten** the screws to 2.5 N m (22 lb in).



27. Install the door seal (1) to the assist step engaging the retainers (2).



28. Assist step (1) complete.

29. Repeat steps 4 – 28 for RH Assist Step – Passenger.

30. Install the front and rear wheel and tire assemblies. Refer to [Tire and Wheel Removal and Installation](#) in Vehicle Service Manual.

31. Lower the vehicle.