

Installation Instructions Part Number

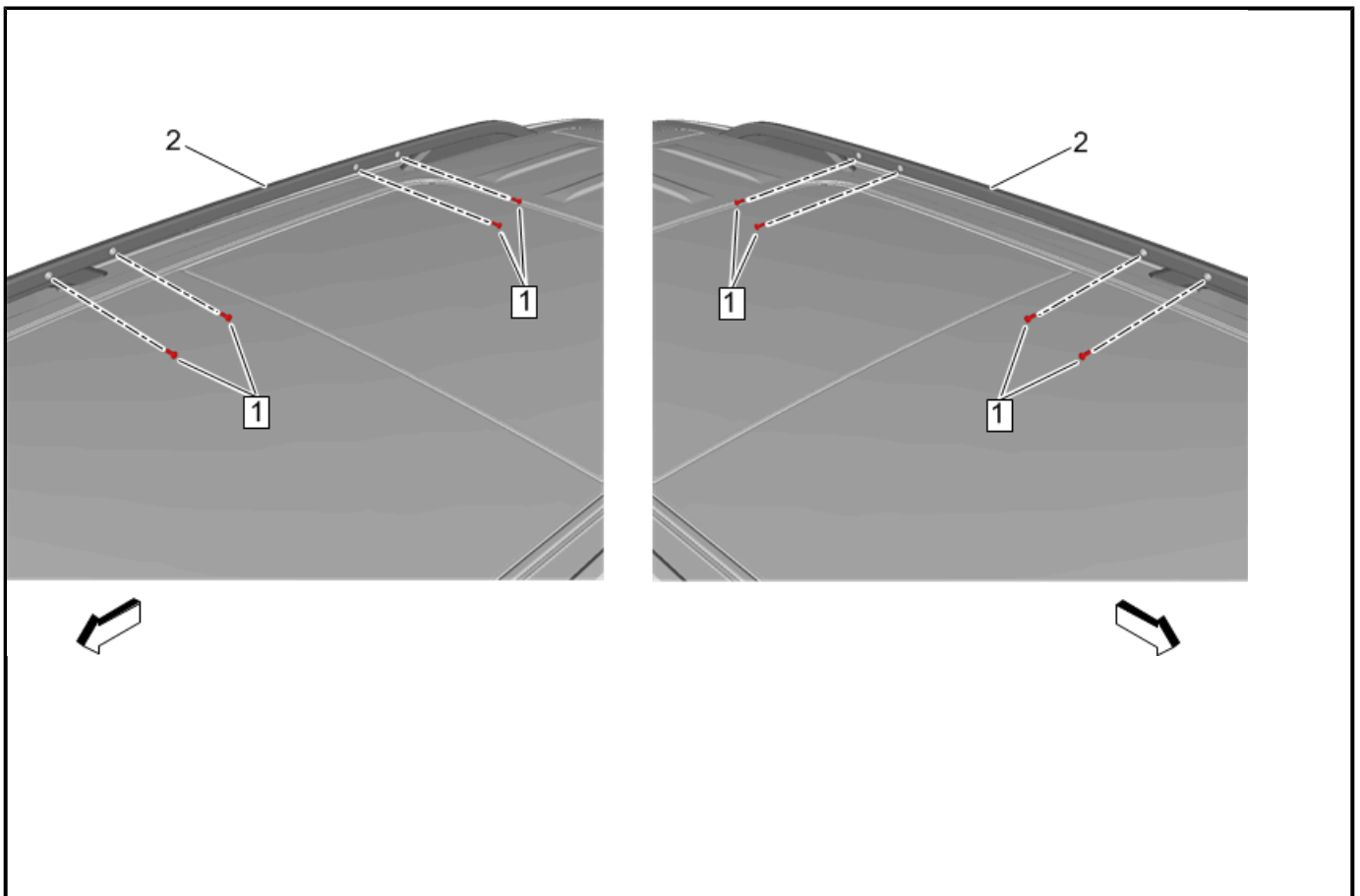
23345419

Kit Contents

Qty	Description
1	Luggage Carrier Rail – Rear
1	Luggage Carrier Rail – Front
8	M6 Screw
1	8 N.m Torque Wrench
1	Installation Instructions

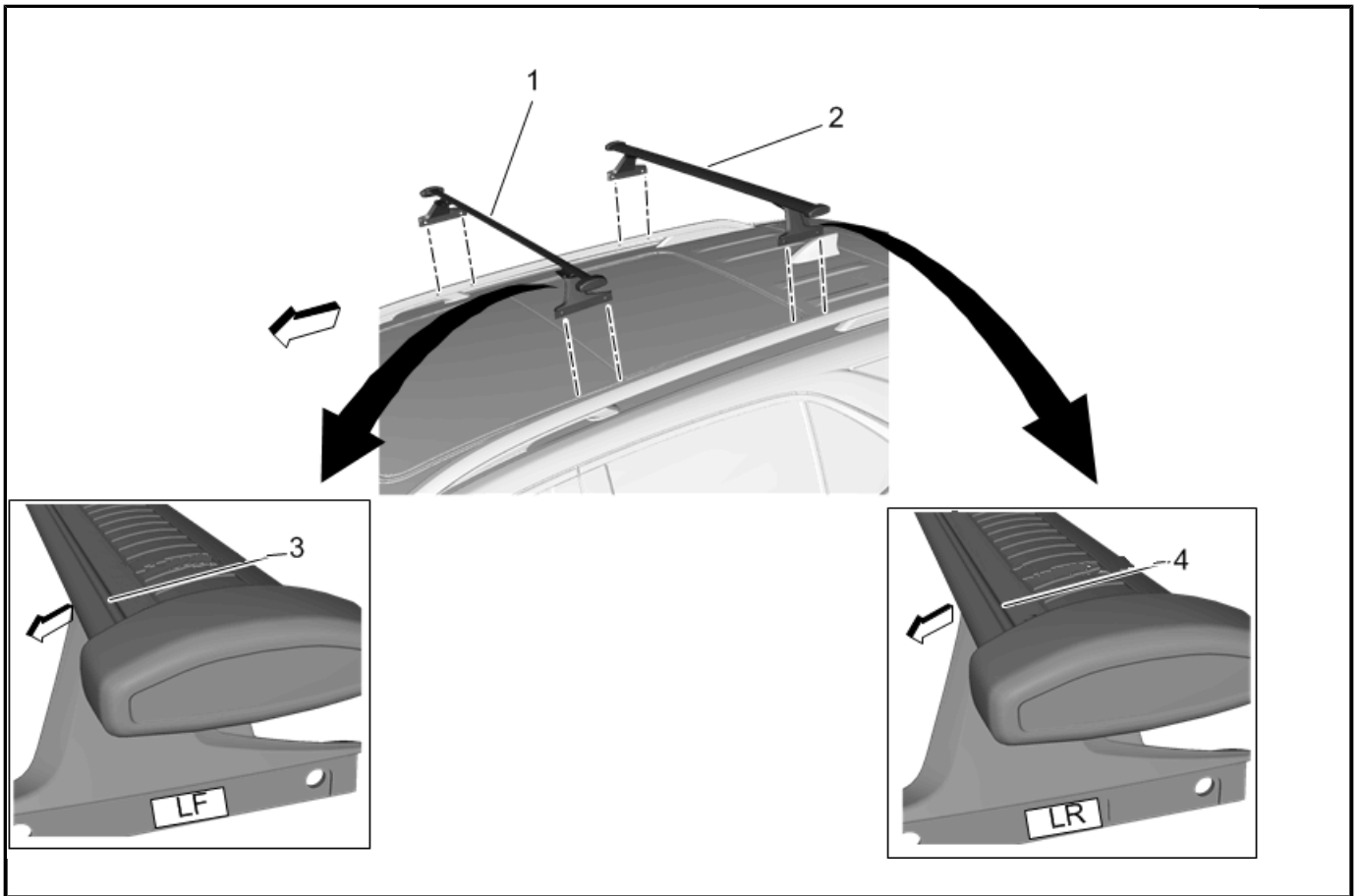
This kit can be installed on Chevrolet and GMC siderail assemblies.

Procedure



4380880

1. Remove the plastic plugs (1) from the siderails (2) and store for future use in the event if the crossrails are removed.



4364956

Note: The rear crossrail is taller than the front crossrail.

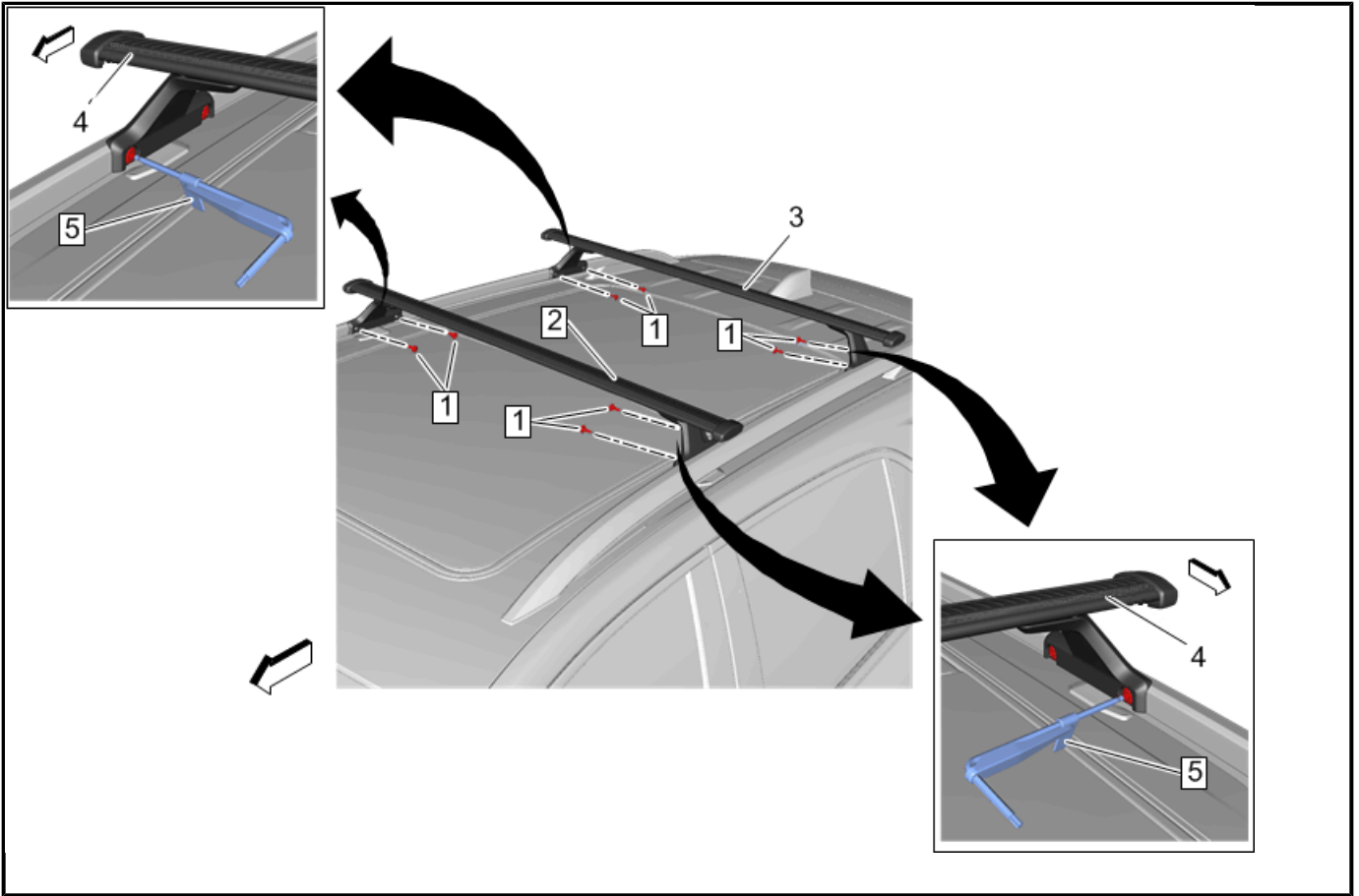
2. Carefully position the front side of the front crossrail assembly (1) to the siderails.

Note: The aerodynamic bead (3) identifies the front edge of the front crossrail assembly.

Note: Passenger side crossbar station may need adjustment to place flush against siderail.

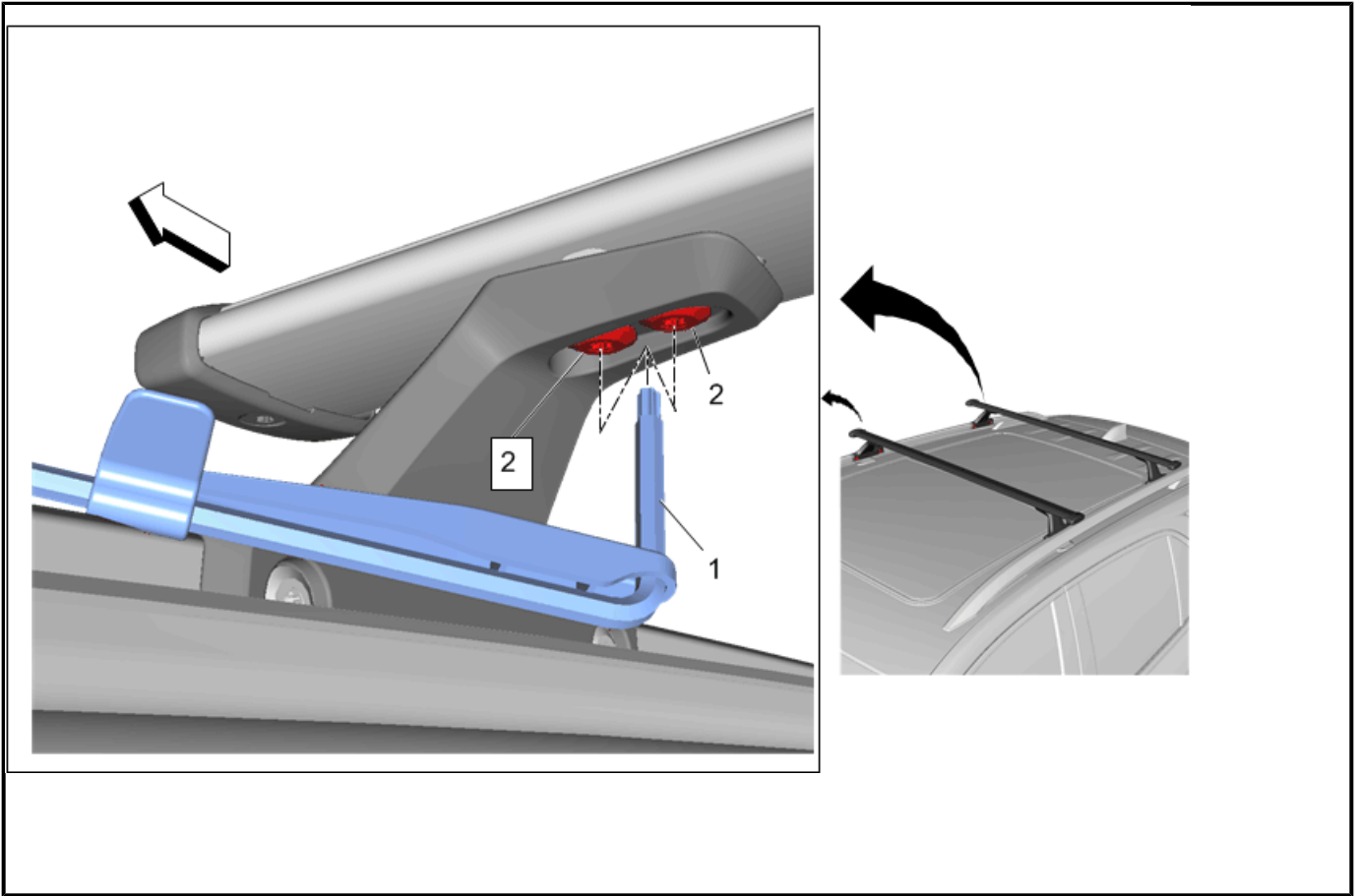
3. Carefully position the front side of the rear crossrail assembly (2) to the siderails.

Note: The aerodynamic bead (4) identifies the front edge of the rear crossrail assembly.



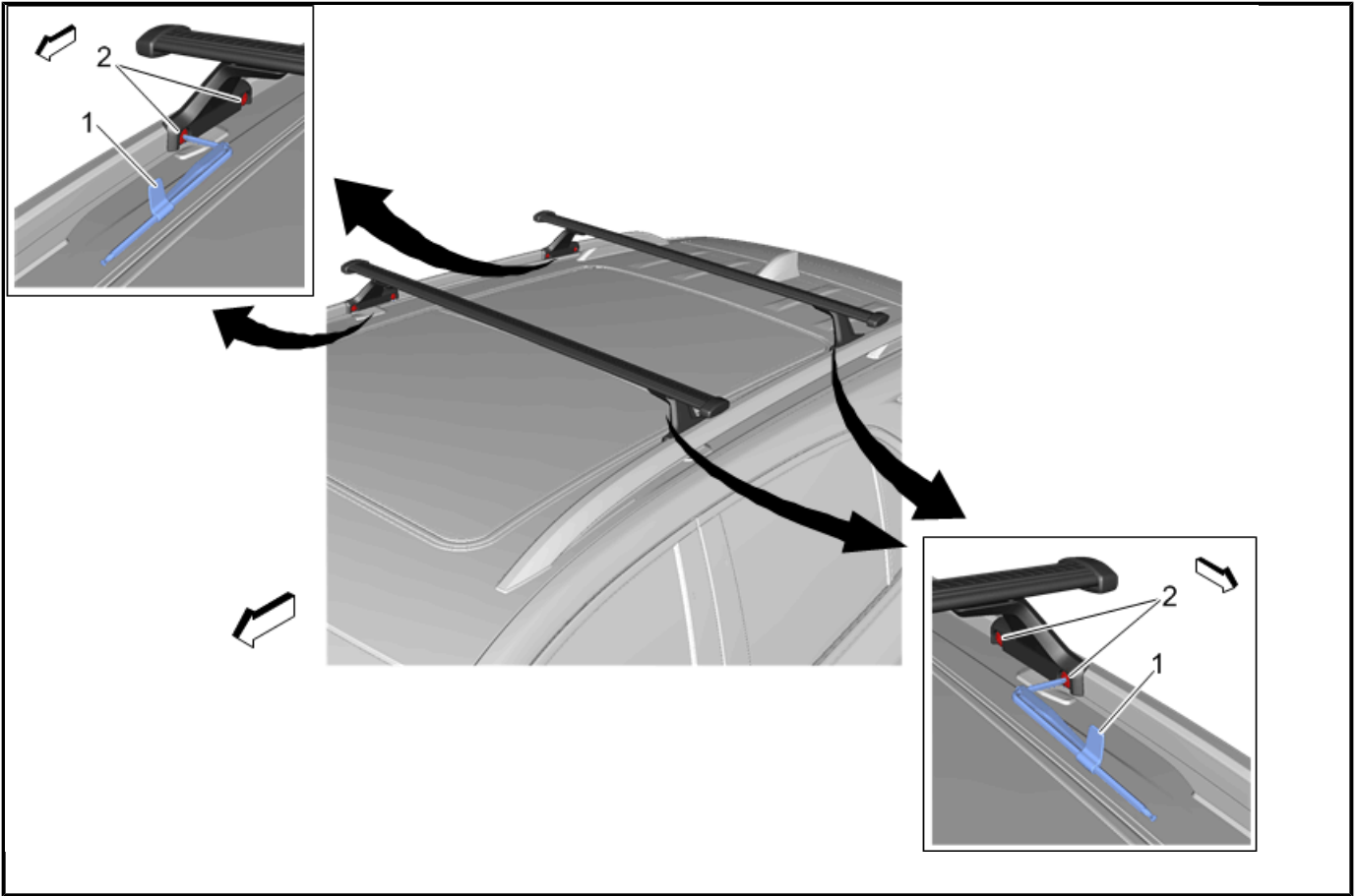
4364957

4. Loosely install the screws (1) to the front (2) and rear (3) siderails using the long end of supplied torque wrench (5).



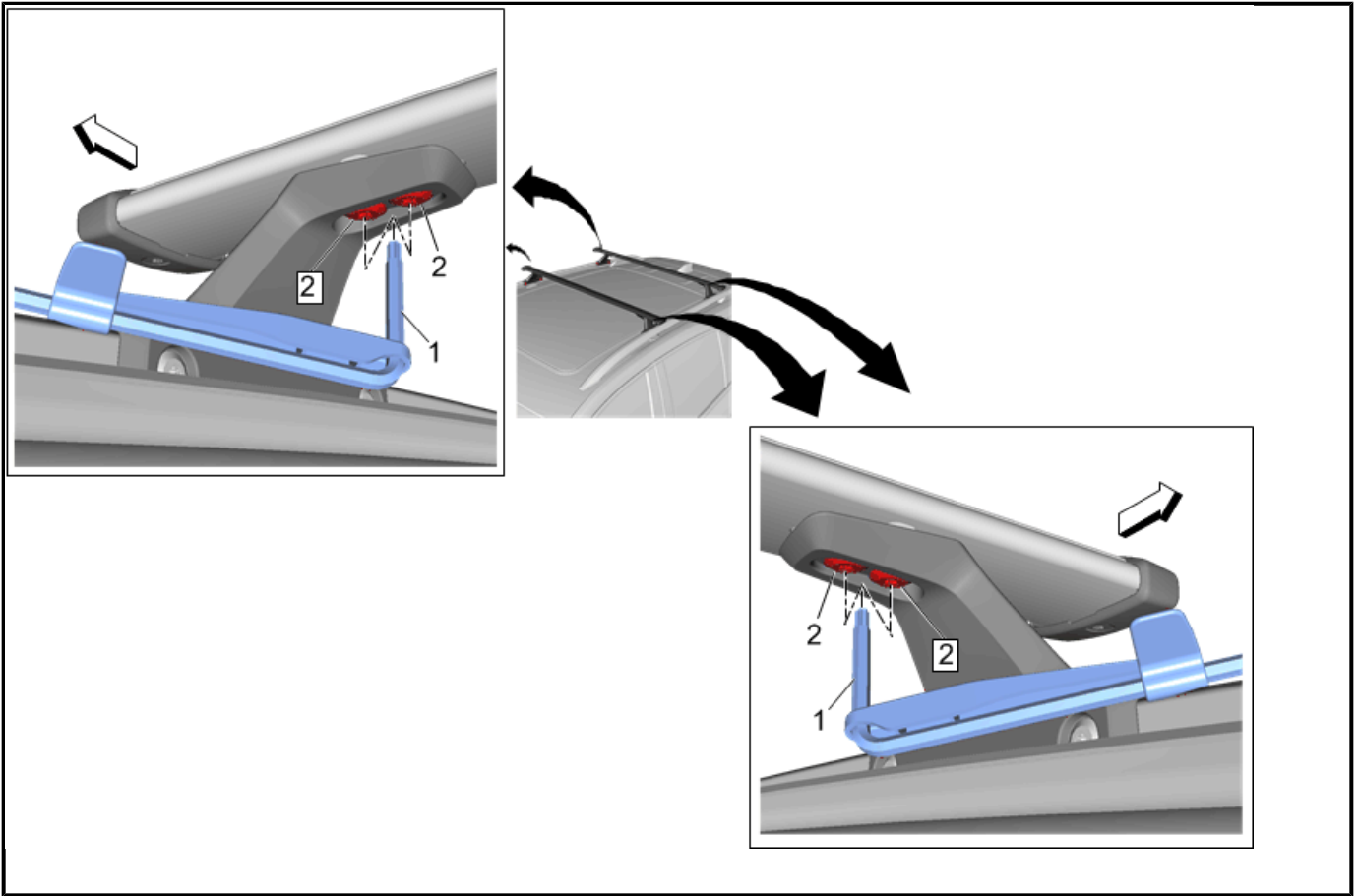
4578837

5. Using the supplied 8 N.m torque wrench (1), tighten the crossrail screws (2) to the crossbar on passenger side only.
Note: You only need to do this on initial installation.



4364958

6. Using the supplied 8 N.m torque wrench (1), tighten the crossrail screws (2) to the side rail.



4575678

7. Using the supplied 8 N.m torque wrench (1), tighten the crossrail screws (2) to the crossbar.

Note: You only need to do this on initial installation.