

Document ID: 5664340

Body Decal Kit Installation

Installation Instructions Part Number

84290358

To enable a successful installation of decals please refer to 52524.01V Accessory Decal Installation Tips and Tricks at <https://techtube.gallery.video/detail/video/5991123051001/52524.01v-accessory-decal-installation-tips-and-tricks?autoStart=true&q=decals>

Note: Video is referenced from the GM Tech Tube in Center of Learning.



Body Decal Kit Installation

DESCRIPTION	QUANTITY
Decal - Front Fascia	1
Decal - Hood "Jake"	1
Decal - "Stingray R"	2
Paper Locating Template Sheet	1
Plastic Squeegee	1
Installation Instructions	1

Tools Required

© 2021 General Motors. All rights reserved.

- Lint-free cloth
- Hair Dryer
- Spray bottle that contains a wetting solution (3 or more drops of unscented liquid detergent mixed with 24 oz. of water)

Note: The decal needs to float on the painted surface for easy positioning, if the adhesive is sticking to the painted surface then add more drops of soap to the spray bottle. Do NOT use Commercial premixed soap solution.

- Plastic Squeegee

Note: Only use a plastic squeegee to work the decals. Using the incorrect squeegee will damage the decals.

- Sewing Needle or Thin Pin

Note: Do NOT use a razor blade.

IMPORTANT NOTES

1. The installation of these decals is difficult; the employment of a trained installation professional (ADI) is recommended.
2. For optimum results, the body surface should be between 60°F/15°C and 90°F/32°C at the time of installation and for two hours after.
3. Power-washing decals is discouraged. If used, a power-wash wand can not be within 24 inches of the decal and should never be pointed at an edge.
4. The use of a wax, polish or buffing wheel is strongly discouraged, as the surface finish can be damaged and/or modified.

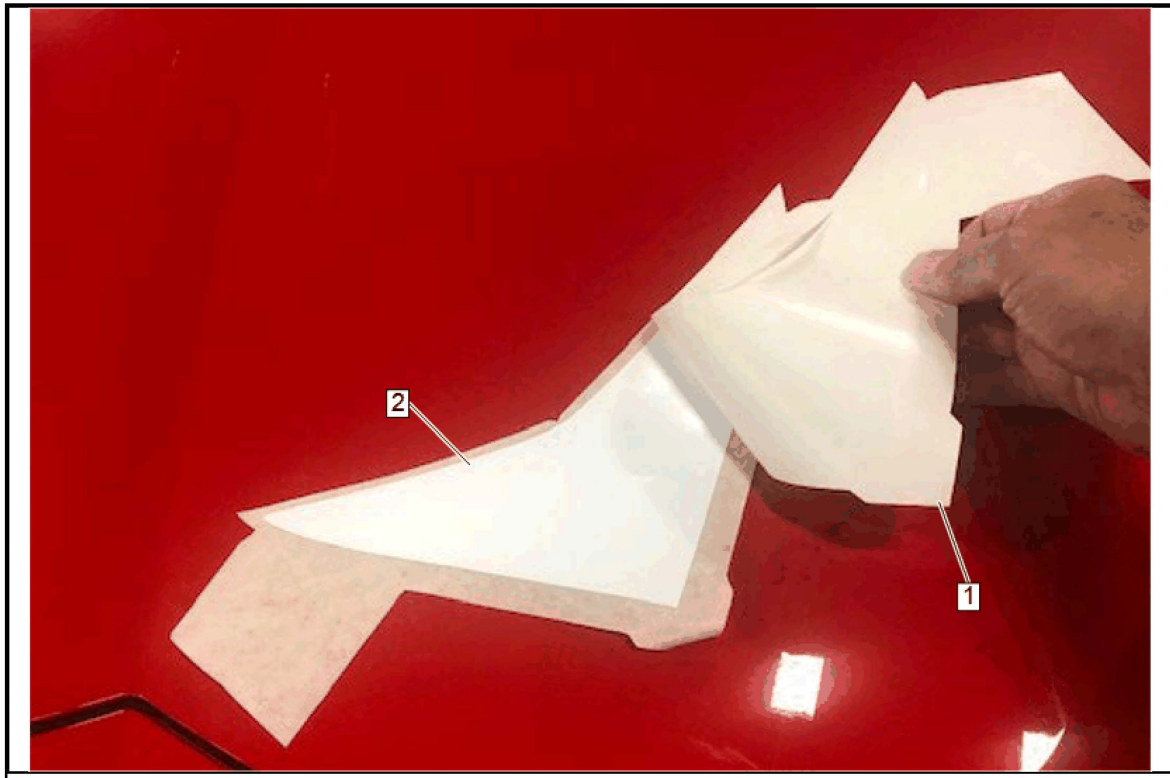
Caution: After a decal installation has been complete, do not high pressure wash the vehicle for 72 hours.

Installation Procedure

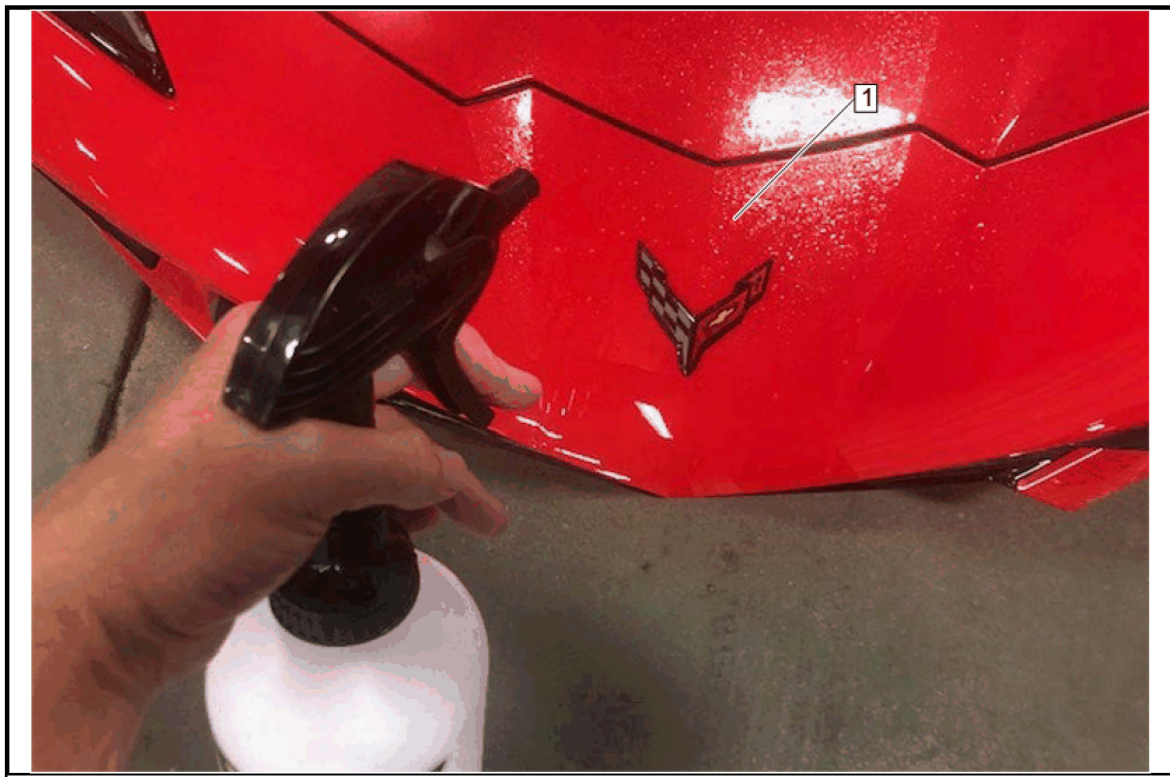
Preliminary Procedures

1. The body surface should be between 60°F/15°C and 90°F/32°C at the time of installation and for two hours after.
2. Initially wash the entire vehicle, then thoroughly wash the front fender surface with warm soap and water.
3. Clean the surface with solvent wipe and remove any residue with a clean, lint-free cloth.

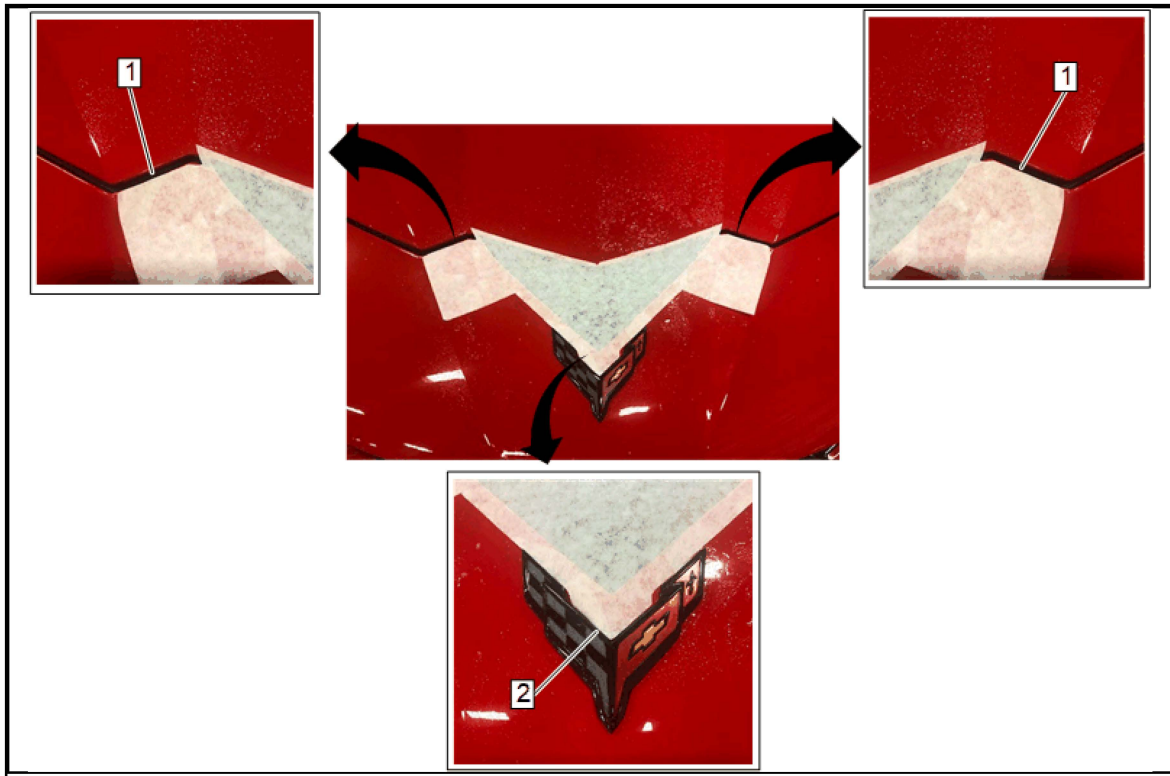
Front Fascia Decal



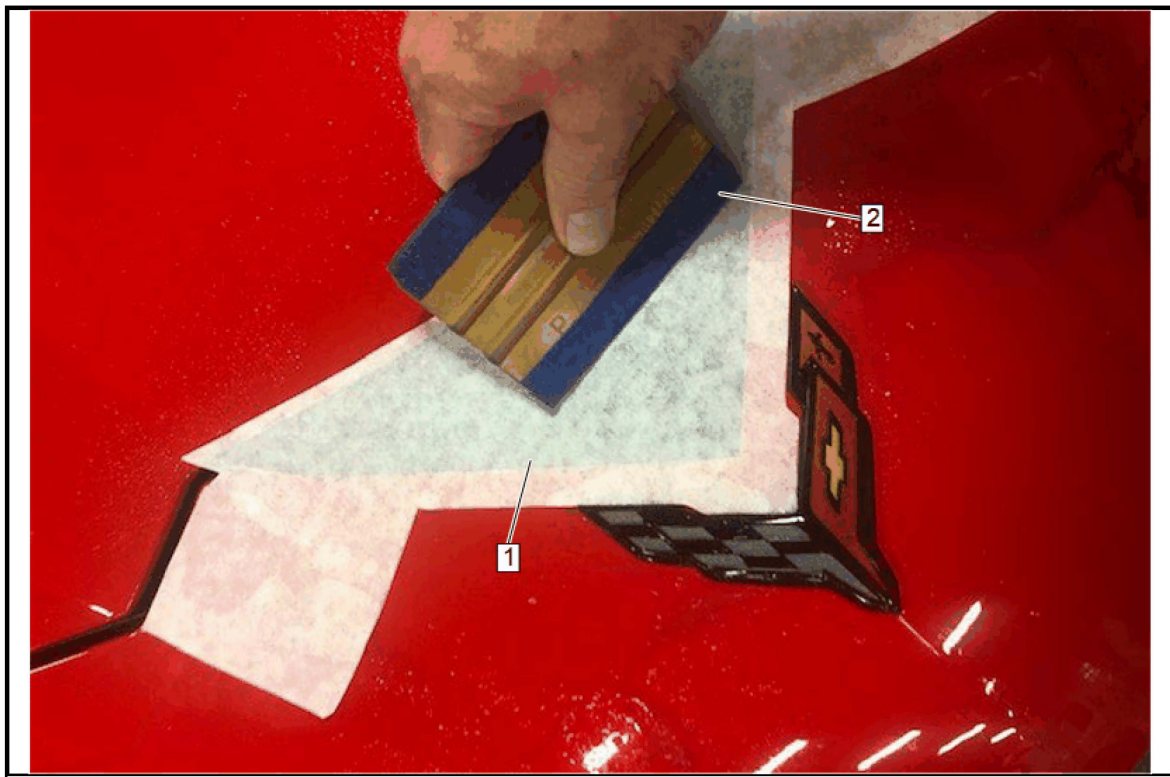
1. Remove the release liner (1) from the front fascia decal (2).



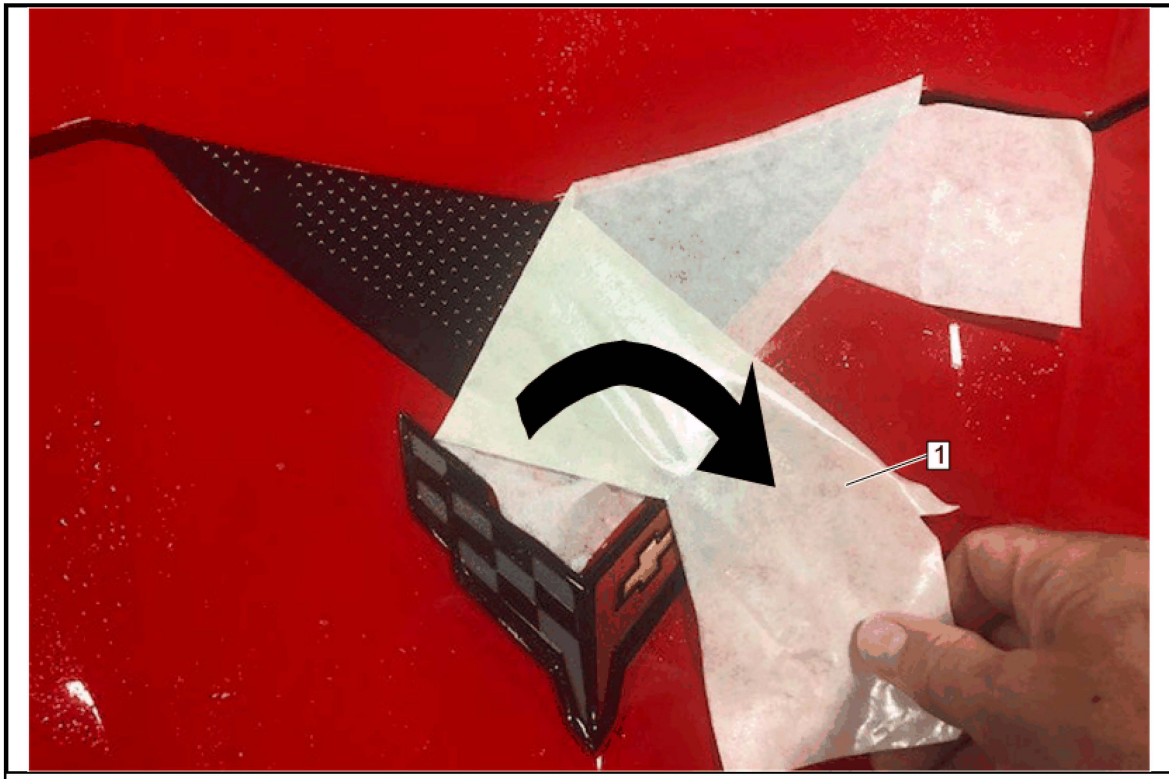
2. Spray the surfactant onto the front fascia panel area (1).



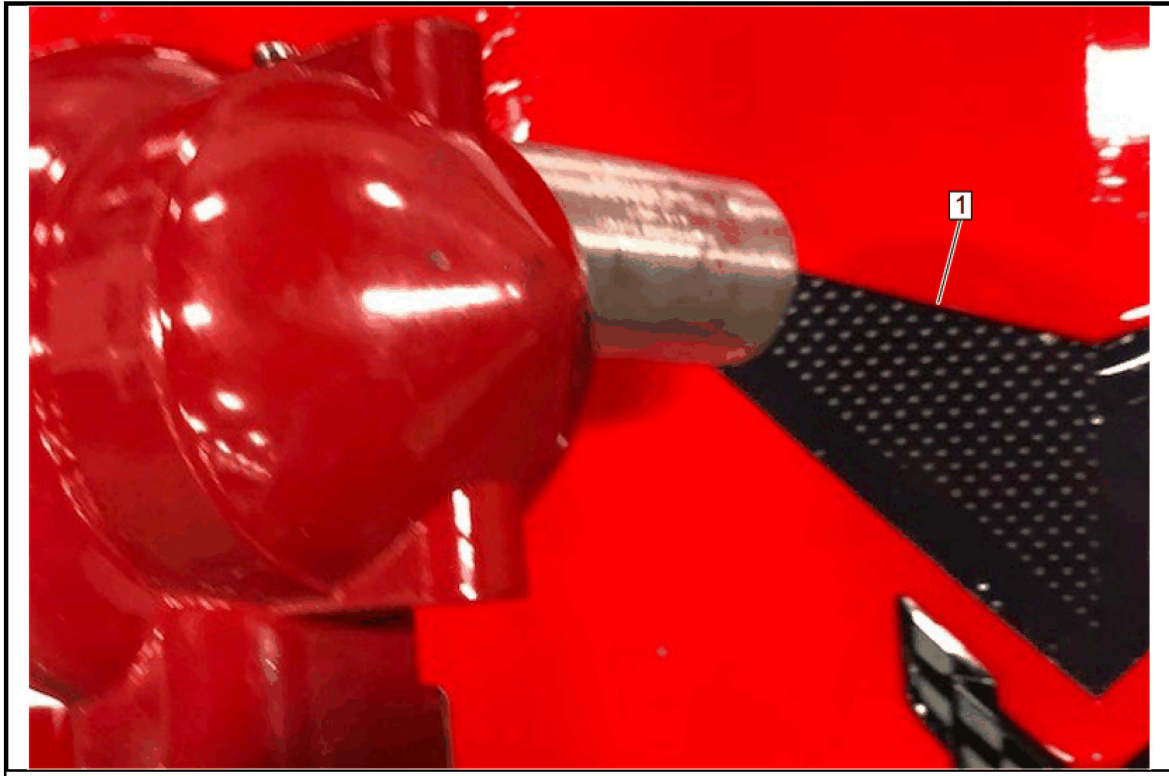
- 3. Align the decal to the rear edge of fascia panel (1) while aligning the front portion to the cross-flag emblem (2).



4. Using a plastic squeegee (2), press the decal (1) into place onto the front fascia.

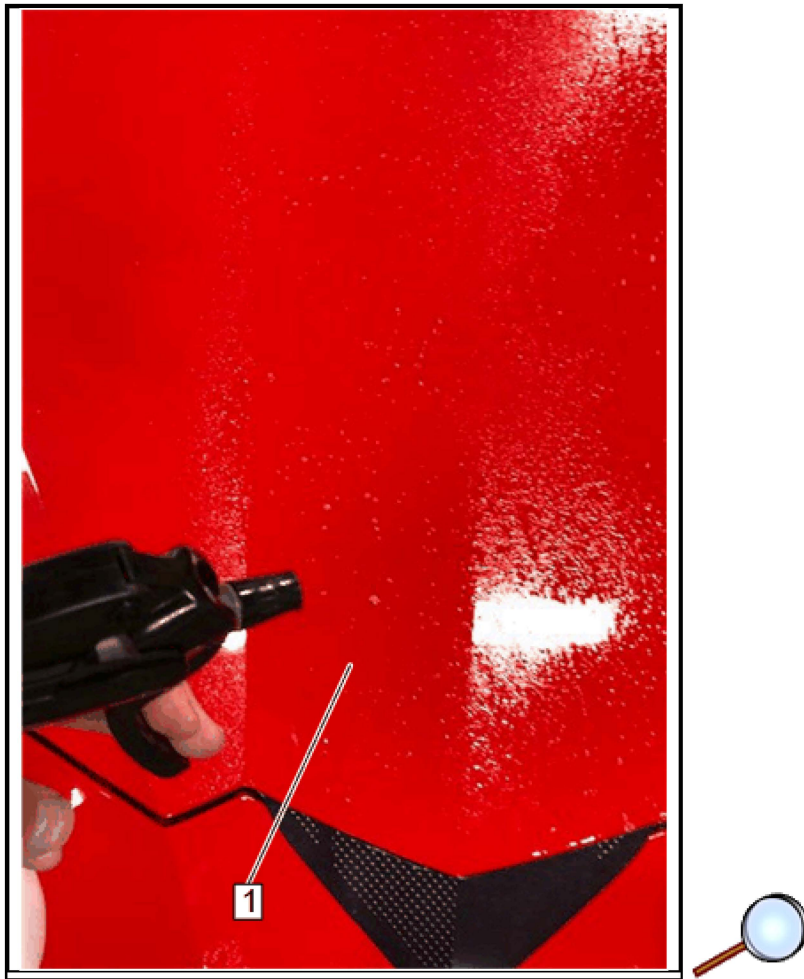


5. Saturate the pre-mask and slowly remove the pre-mask (1) at 180 degrees.
6. After pre-mask removal, never use an uncovered squeegee to re-press a decal into place. Wrap the squeegee with a towel or re-spray the surface with surfactant.



7. Using a hair dryer heat and press the decal edge (1) over and onto the rear edge of the front fascia.
8. If bubbles are present after pre-mask carrier removal, wrap a towel around the squeegee and carefully attempt to push the bubble to the side of the stripe. If the bubble cannot be moved, use a sewing needle to pierce the bubble and press the remaining solution from beneath the stripe.
Note: The pin must be inserted in the side of the bubble, not the top to prevent the pin from breaking the paint and cause corrosion. See "Accessory Decal Installation Tips and Tricks" video for demonstration.
9. For any areas that may have become unsealed, apply heat using a hair dryer and then use a towel to gently press the decal into place.

Hood Decal



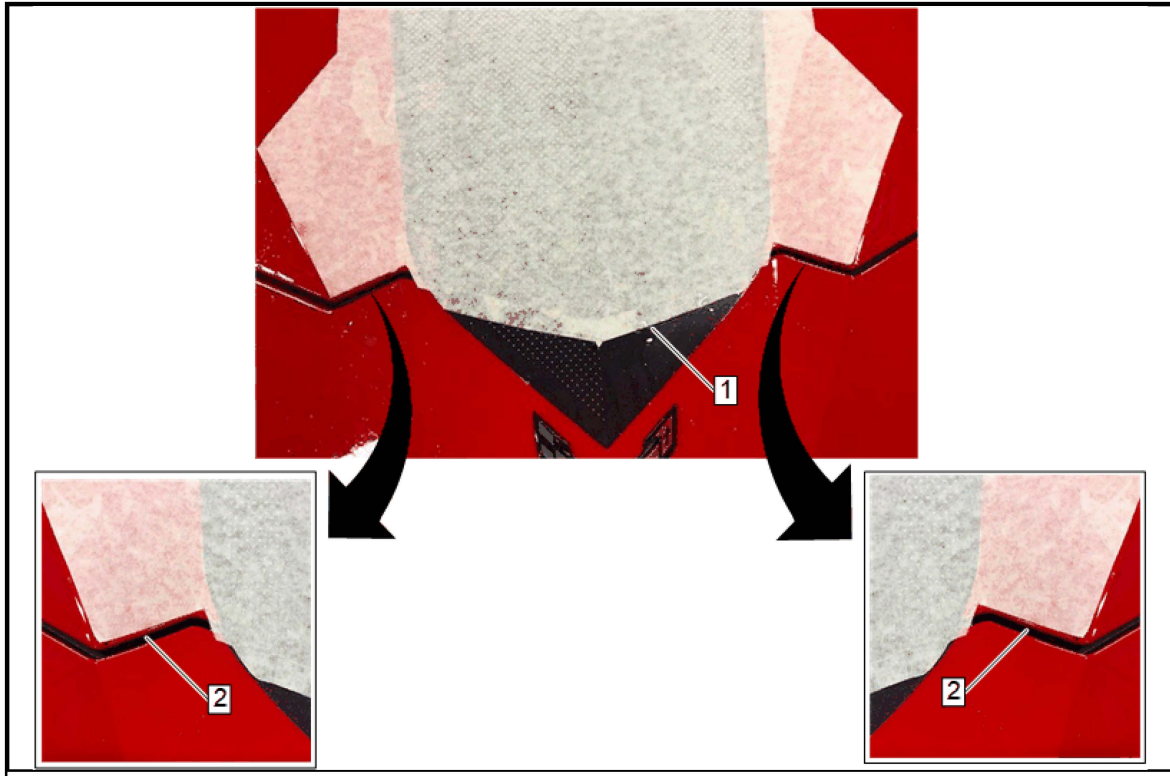
1. Spray the surfactant onto the hood area (1).



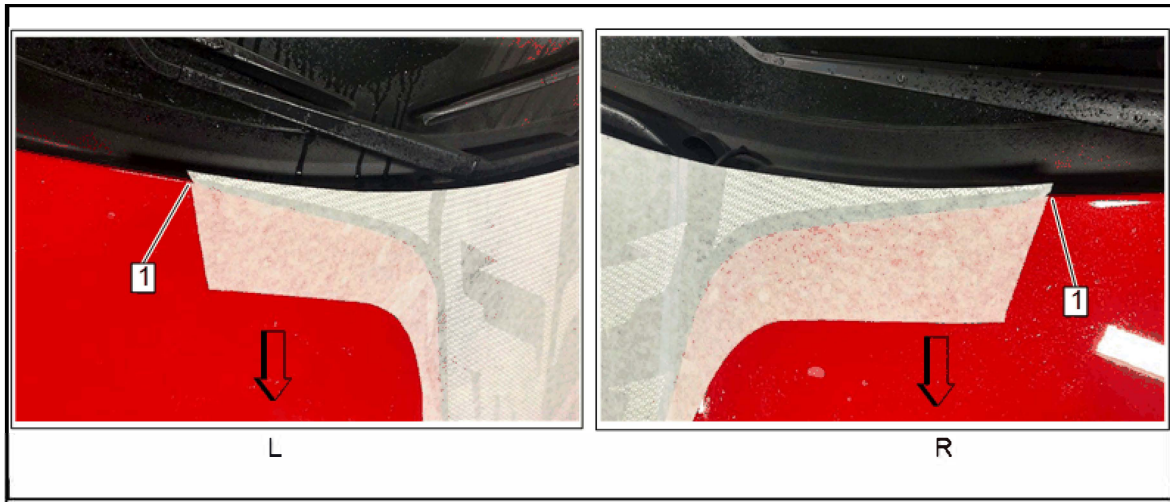
2. Remove the release liner (1) from the hood decal.



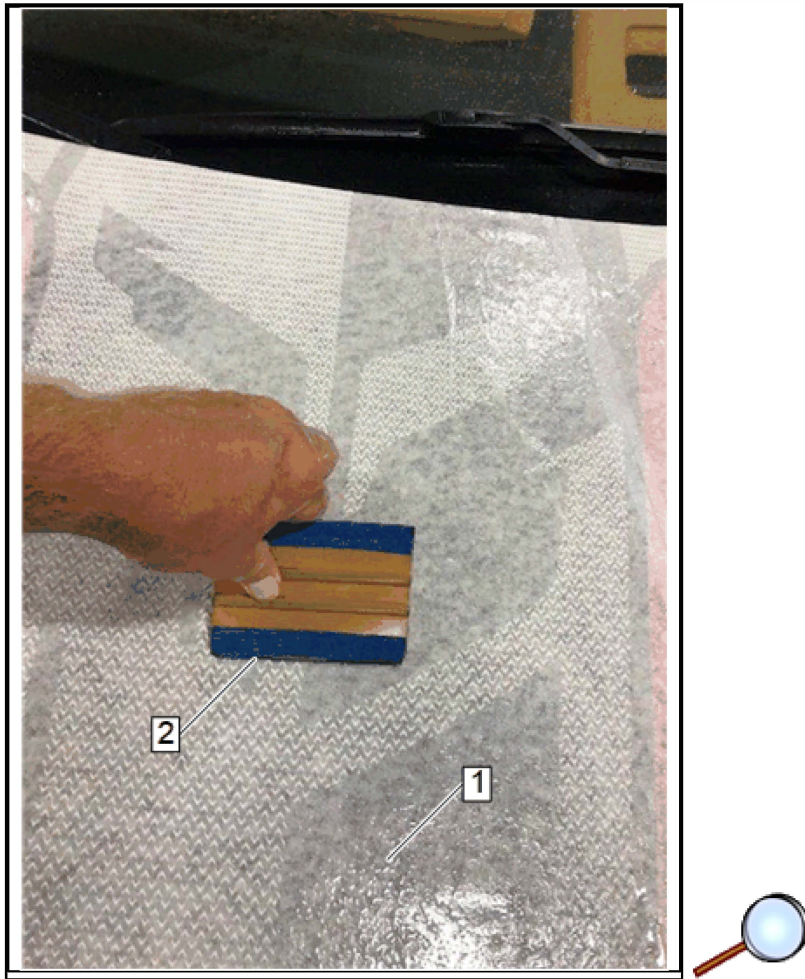
3. Spray the surfactant onto the hood decal adhesive layer (1).



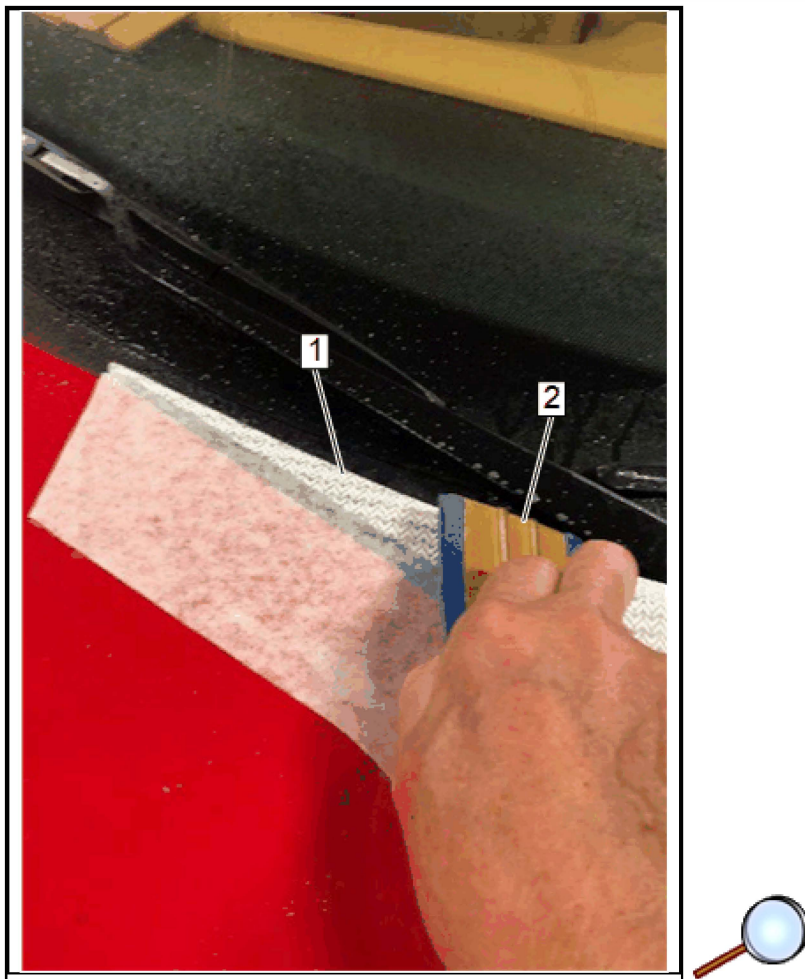
4. Align the hood decal to the installed fascia decal (1) and front edge of the hood panel (2).



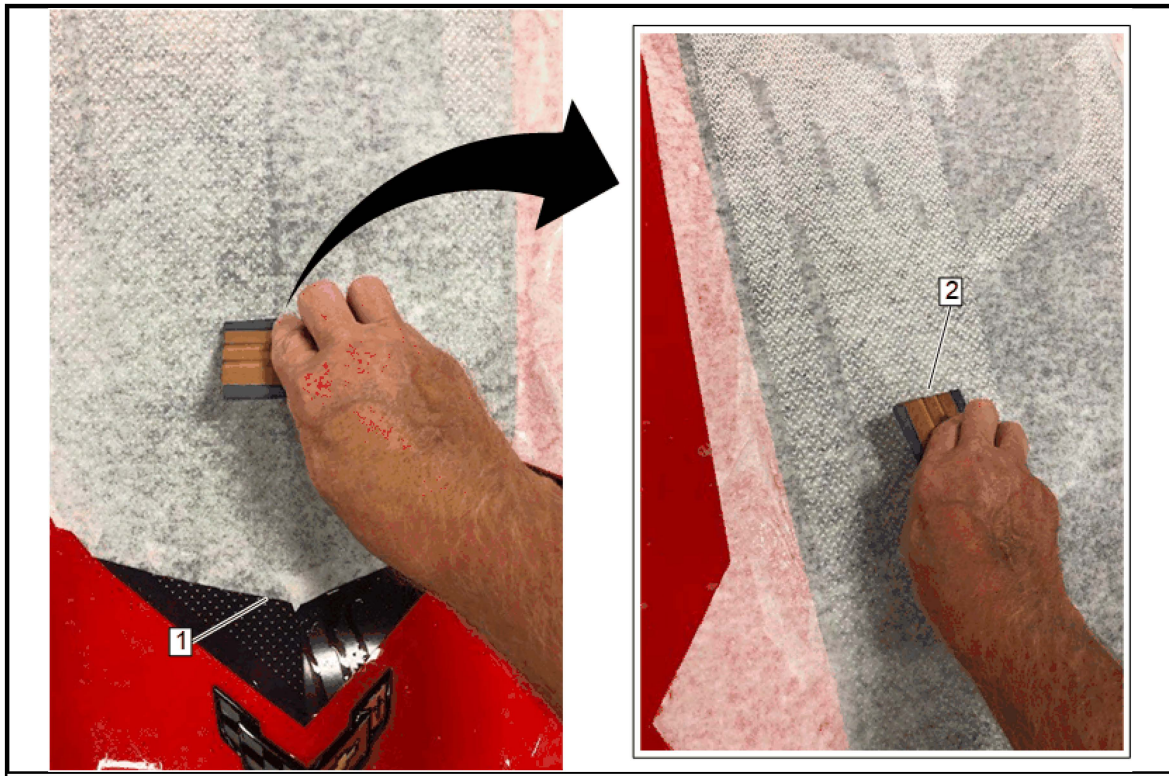
5. Align the outer notches (1) on both rear edges to the rear edge of the hood panel.



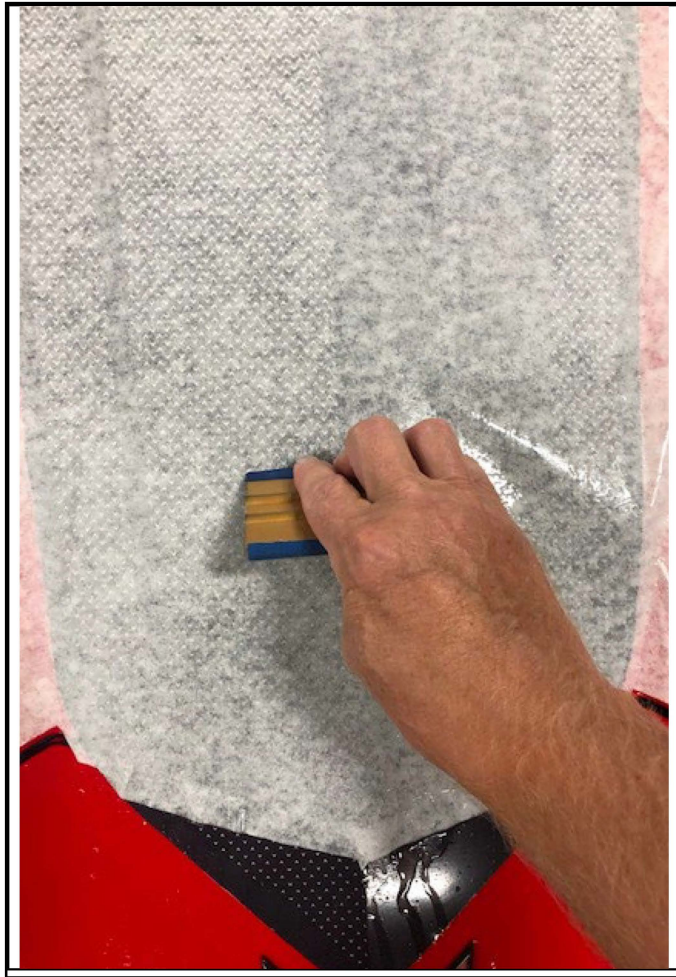
6. Spray surfactant onto the decal (1), and starting at the center, firmly squeegee (2) into place.



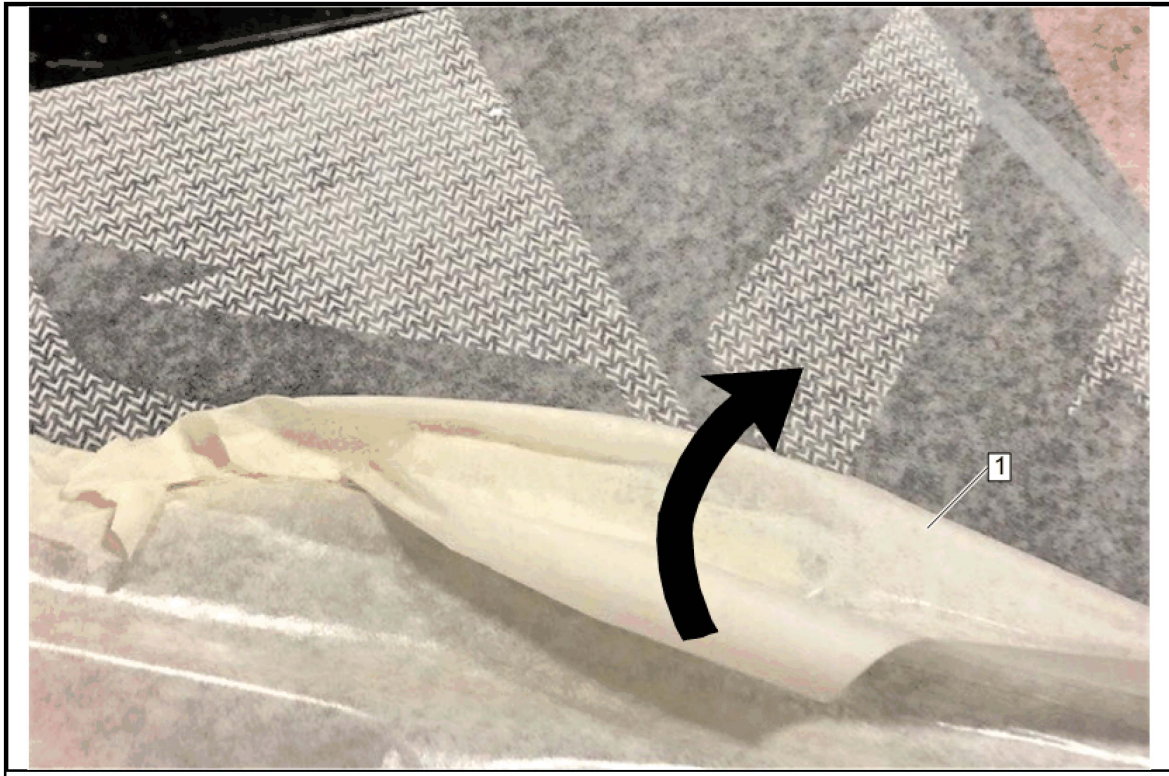
7. Firmly squeegee (2) the rear half of the decal and the outer edges (1) into place.



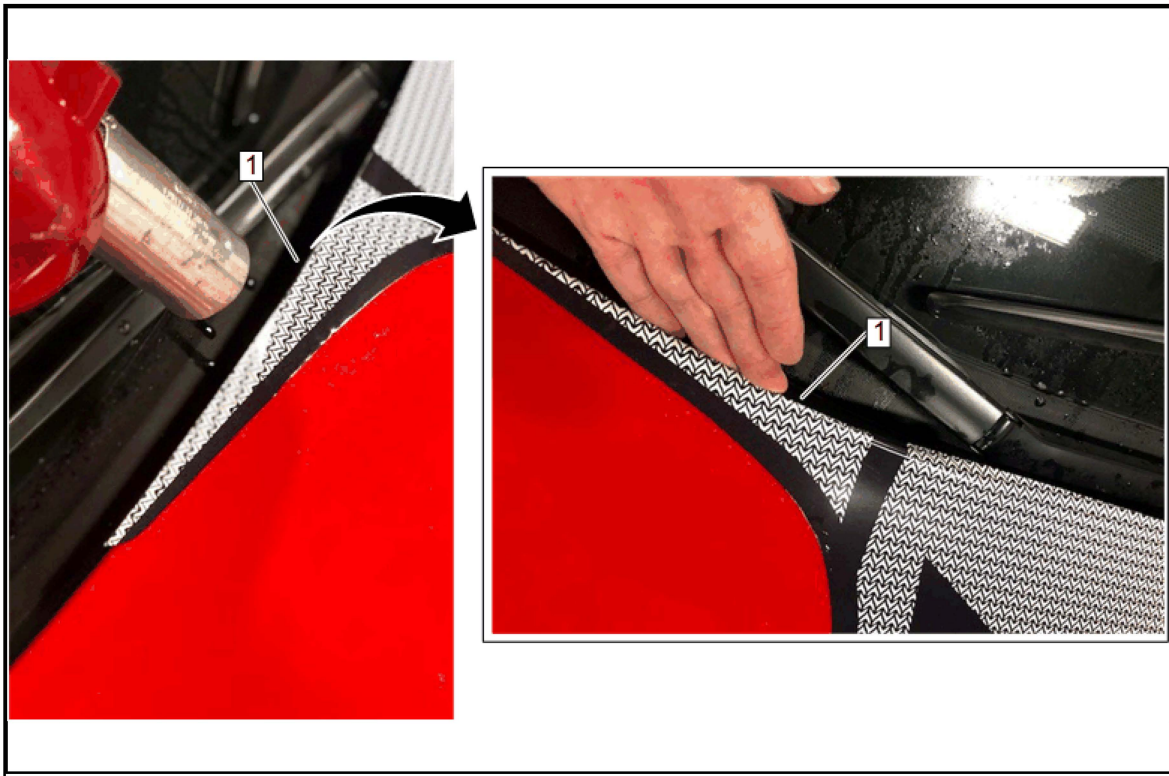
8. Verify the alignment to the installed front fascia decal (1) and firmly press the balance into place using squeegee (2).



9. **Note:** If any areas on the outer lower edges “pucker”, then slightly stretch the decal forward/outward to “form-fit” to the panel. Squeegeeing directly through a pucker could result in a wrinkle.



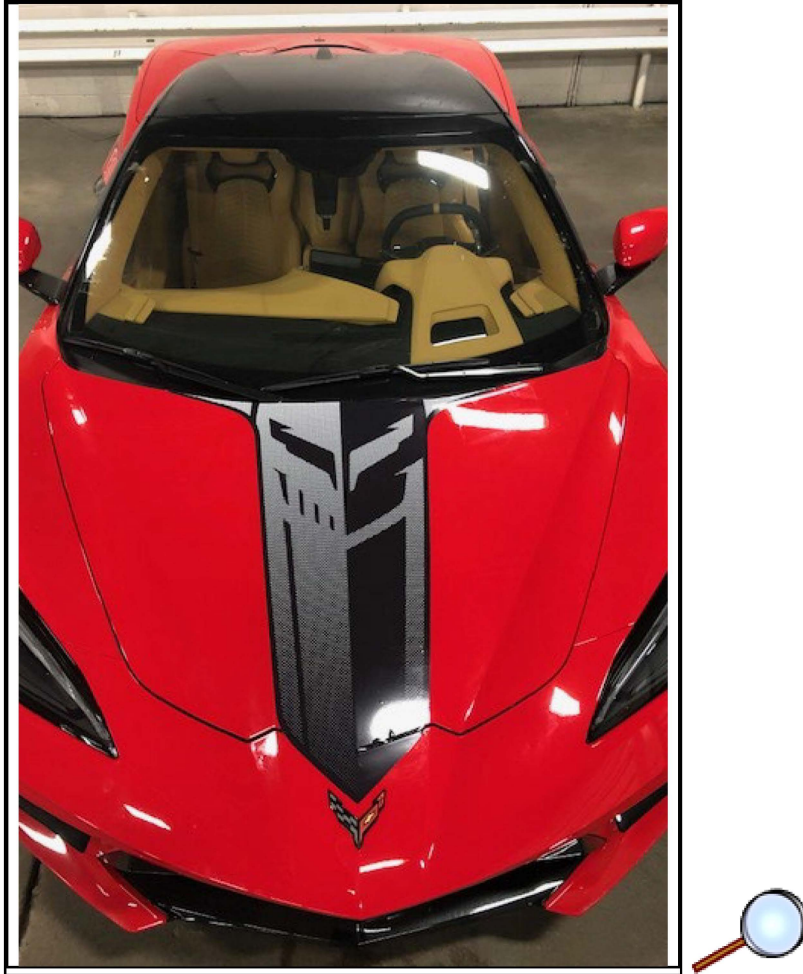
- 10. Saturate the pre-mask and slowly remove the pre-mask (1) at 180 degrees.
- 11. After pre-mask removal, never use an uncovered squeegee to re-press a decal into place. Wrap the squeegee with a towel or re-spray the surface with surfactant.



12. Using a hair dryer heat and fold the wrap over and under the front and rear edges (1) of the hood panel using the same heat and pressure as used on the front fascia decal.
13. If bubbles are present after pre-mask carrier removal, wrap a towel around the squeegee and carefully attempt to push the bubble to the side of the stripe. If the bubble cannot be moved, use a sewing needle to pierce the bubble and press the remaining solution from beneath the stripe.

Note: The pin must be inserted in the side of the bubble, not the top to prevent the pin from breaking the paint and cause corrosion. See "Accessory Decal Installation Tips and Tricks" video for demonstration.

14. For any areas that may have become unsealed, apply heat using a hair dryer and then use a towel to gently press the decal into place.



15. Front fascia and hood decal installation complete.

Note: After a decal installation has been complete, do not high pressure wash the vehicle for 72 hours.

Stingray R" Decals

Note: These decals can be placed on the door or on a GM Accessory Rocker Panel (if equipped).

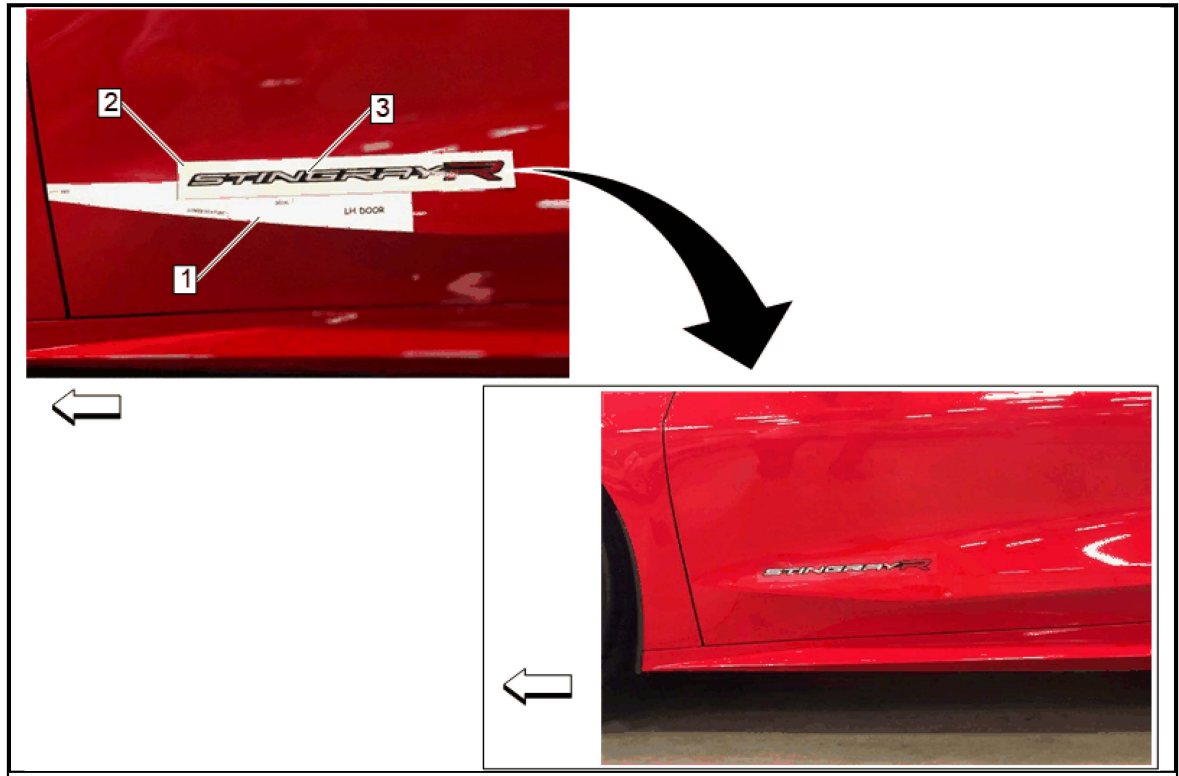
1. Use scissors or a craft knife to trim-out the template that is applicable to the panel/positioning.

Note: Refer to images below for decal placement options.

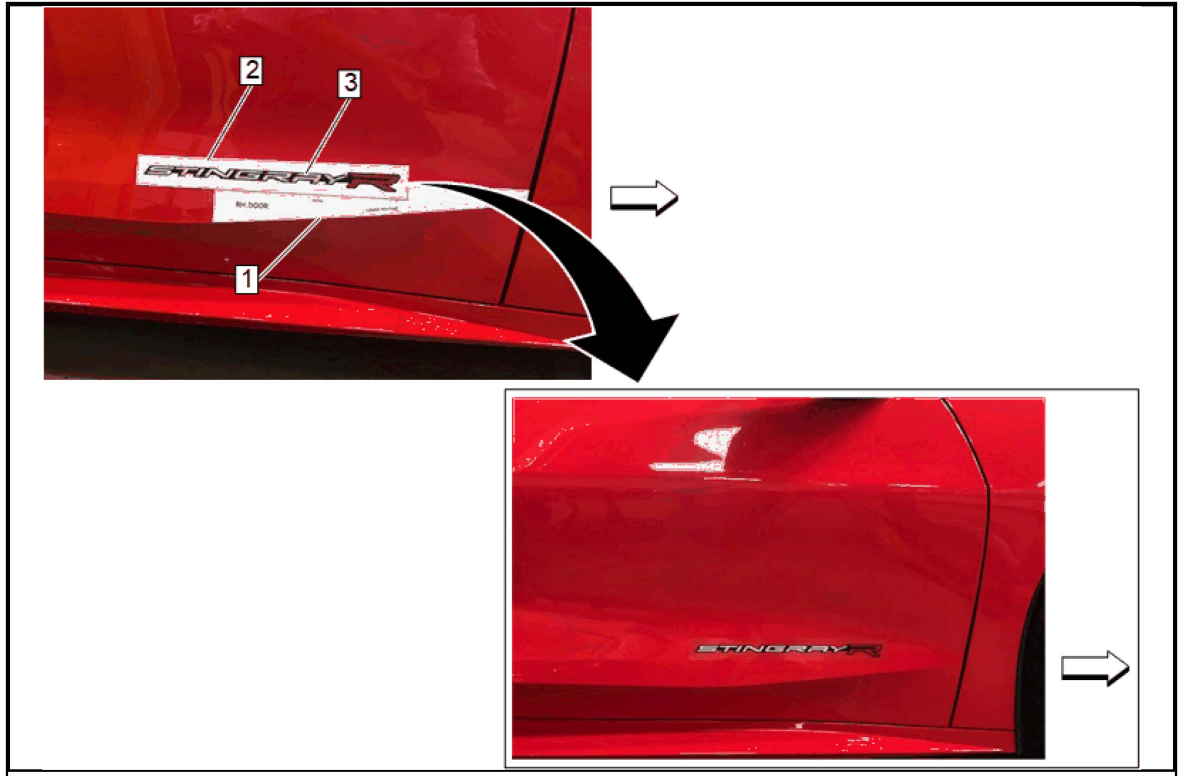
2. Tape the template (1) into place as shown.

3. Remove the release liner from the decal and spray a small amount of surfactant onto the exposed adhesive (do not spray onto the vehicle).
4. Align the edge of the pre-mask carrier (2) to the template edges (1) as indicated.
5. Firmly press the decal (3) into place.
6. Carefully remove the pre-mask carrier (2) at 180 degrees.

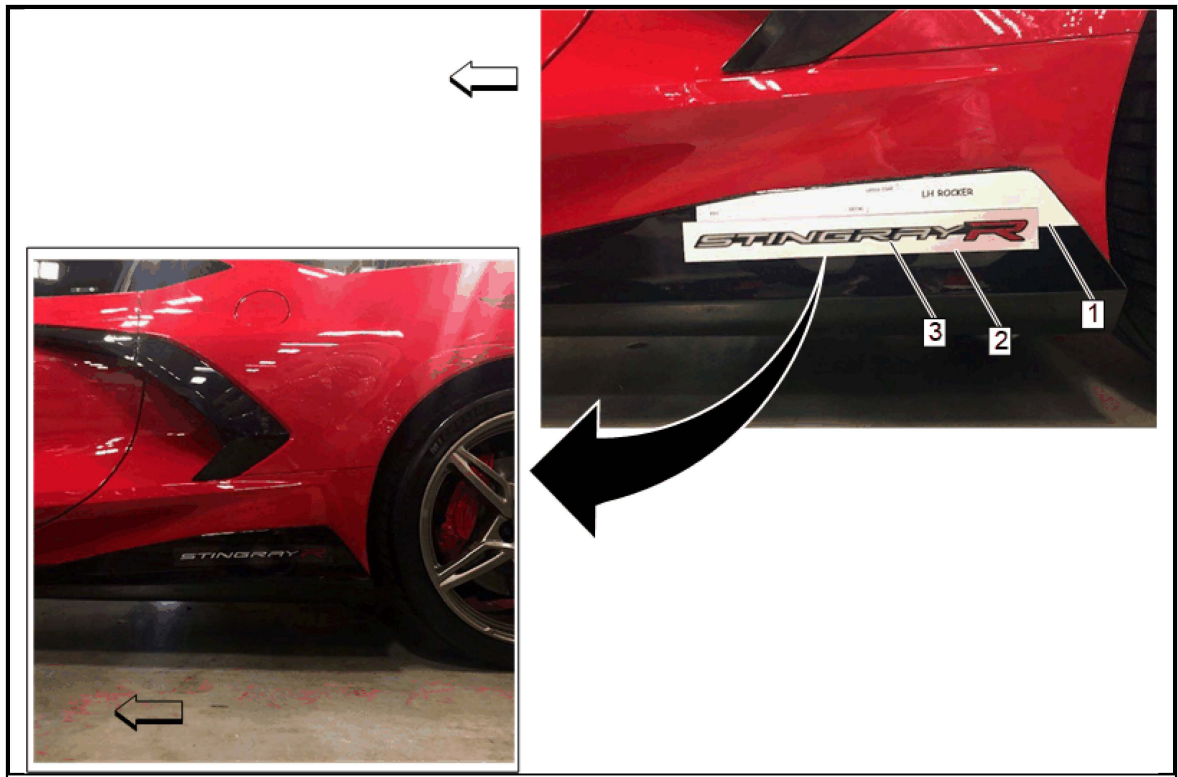
Decal Placement Options



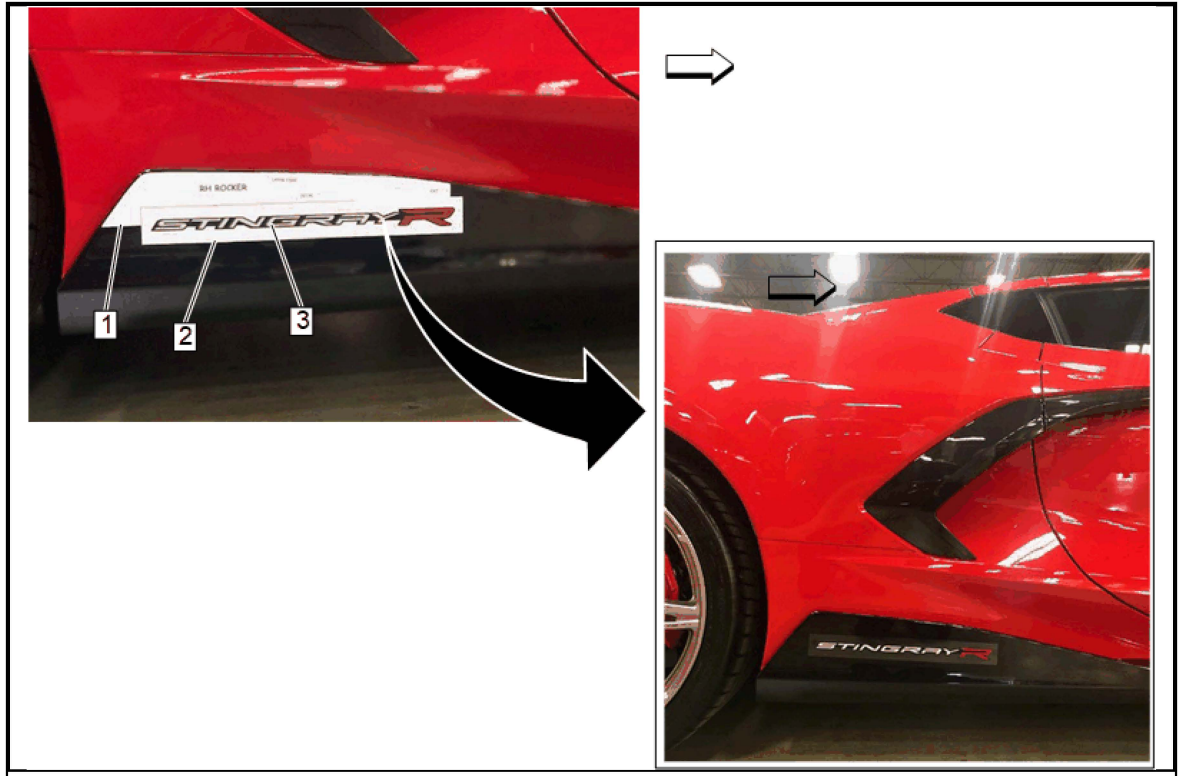
- LH Door



o RH Door



LH Rocker



- o RH Rocker