

Side Decal Package Installation

Installation Instructions Part Number

85160130

To enable a successful installation of decals please refer to 52524.01V Accessory Decal Installation Tips and Tricks at <https://techtube.gallery.video/detail/video/5991123051001/52524.01v-accessory-decal-installation-tips-and-tricks?autoStart=true&q=decals>

Note: Video is referenced from the GM Tech Tube in Center of Learning.

Kit Contents

Qty	Description
1	Decal-Front Fender-LH
1	Decal-Front Bumper Fascia-LH (ZR2 part and standard trim are on one carrier separated by perforation)
1	Decal-Front Fender-RH
1	Decal-Front Bumper Fascia-RH (ZR2 part and standard trim are on one carrier separated by perforation)
1	Plastic Squeegee
1	Installation Instructions

Tools Required

- 70% Isopropyl Alcohol
- Lint-free cloth
- Sewing Needle or Thin Pin

Note: Do NOT use a razor blade.

- Plastic Squeegee (included in kit)

Note: Only use a plastic squeegee provided to work the decals. Using the incorrect squeegee will damage the decals.

- Spray bottle that contains a wetting solution (3 or more drops of unscented liquid detergent mixed with 24 oz. of water)

Note: The decal needs to float on the painted surface for easy positioning, if the adhesive is sticking to the painted surface then add more drops of soap to the spray bottle. Do NOT use Commercial premixed soap solution.

- Unscented Liquid Dish Soap
- Hair Dryer

Important Considerations

Attempting to install a decal dry (without the use of a surfactant) can result in bubbles that will be difficult to remove.

Preparation - Before Installation

1. After opening the kit, check to see if any parts are missing and that the product is not damaged.
2. This product should be installed with proper installation tools.
3. Install this product while observing all warnings and precautions stated in this instruction booklet.
4. **IMPORTANT: Begin with a thoroughly washed vehicle.**
5. Ambient temperature of decals and vehicle must be 70°F / 21°C to 90°F / 32°C at the time of installation and for a minimum of 30 minutes and up to two hours after.
6. Thoroughly clean vehicle surface with 70% isopropyl alcohol and follow with a dry wipe.
7. To ensure bubble-free application, put three or four tiny drops of liquid detergent into a 24 oz. / 750 ml trigger-type spray bottle and fill with water. Replace the top and shake to mix the soap and water "surfactant." Set nozzle for a fine mist.

Note: It is strongly recommended not to use professional premixed surfactant, but to mix your own soap and water surfactant to control the how the part floats on the panel for positioning before activating the adhesion with the squeegee.

Note: See "Accessory Decal Installation Tips and Tricks" video for demonstration.

Installation Notes

1. All of the decals include premask carrier extensions and notches that allow the installer to accurately align the decal to the body panel.
2. The soap / water "surfactant" is intended to allow the installer the opportunity to position the decal before any pre-adhesion can occur. If the decal sticks prematurely and does not easily "glide" across the surface of a body panel, increase the amount of surfactant that has been applied to the body panel and/or place additional soap into the spray bottle and re-spray.
3. The adhesive is activated by pressure. Be sure to use firm, overlapping strokes, beginning at the center of the decal and working toward the edges of the decal.

Note: Squeegee shown in pictures has a protective cloth attached to the squeegee. Installer must use a lint free towel to cover edge of squeegee to prevent damage to decal once the blue premask is removed.

4. When using the squeegee, be careful not to drag the squeegee onto the painted body panel.
5. After premask removal, never use an uncovered squeegee to re-press a decal into place. Wrap the squeegee with a lint-free towel and re-spray the decal with surfactant before applying additional pressure.
6. The decals have a paper-premask carrier. Should this carrier be difficult to remove, spray the carrier paper with the surfactant and wait 10 seconds for the carrier to soften and release from the decal.
7. If bubbles are present after premask carrier removal, wrap a towel around the squeegee and carefully attempt to push bubble to the side of the decal. If the bubble cannot be moved, use a sewing needle to pierce the bubble and press the remaining solution from beneath the decal.

Note: The pin must be inserted in the side of the bubble, not the top to prevent the pin from breaking the paint and cause corrosion.

Note: See "Accessory Decal Installation Tips and Tricks" video for demonstration.

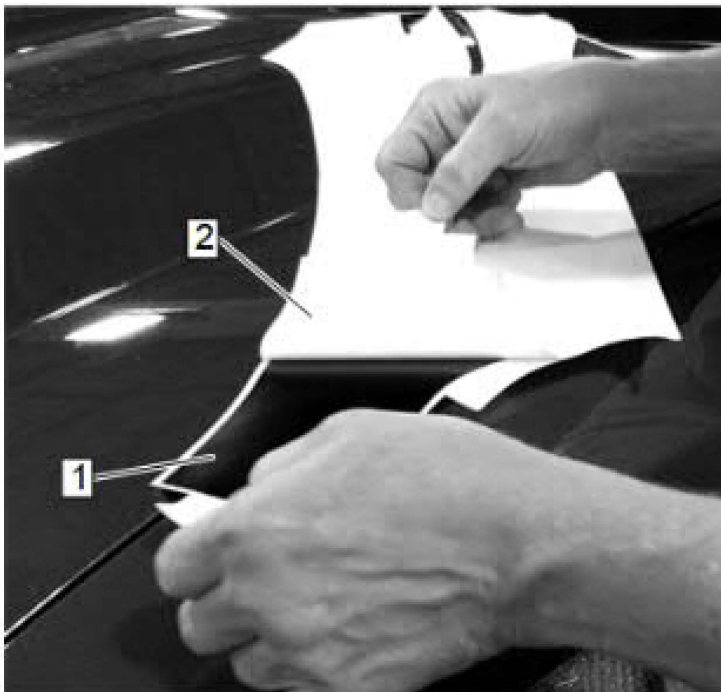
Note: After a decal installation has been completed, do not high pressure wash the vehicle for 72 hours.

Installation Procedure

Fender Decal



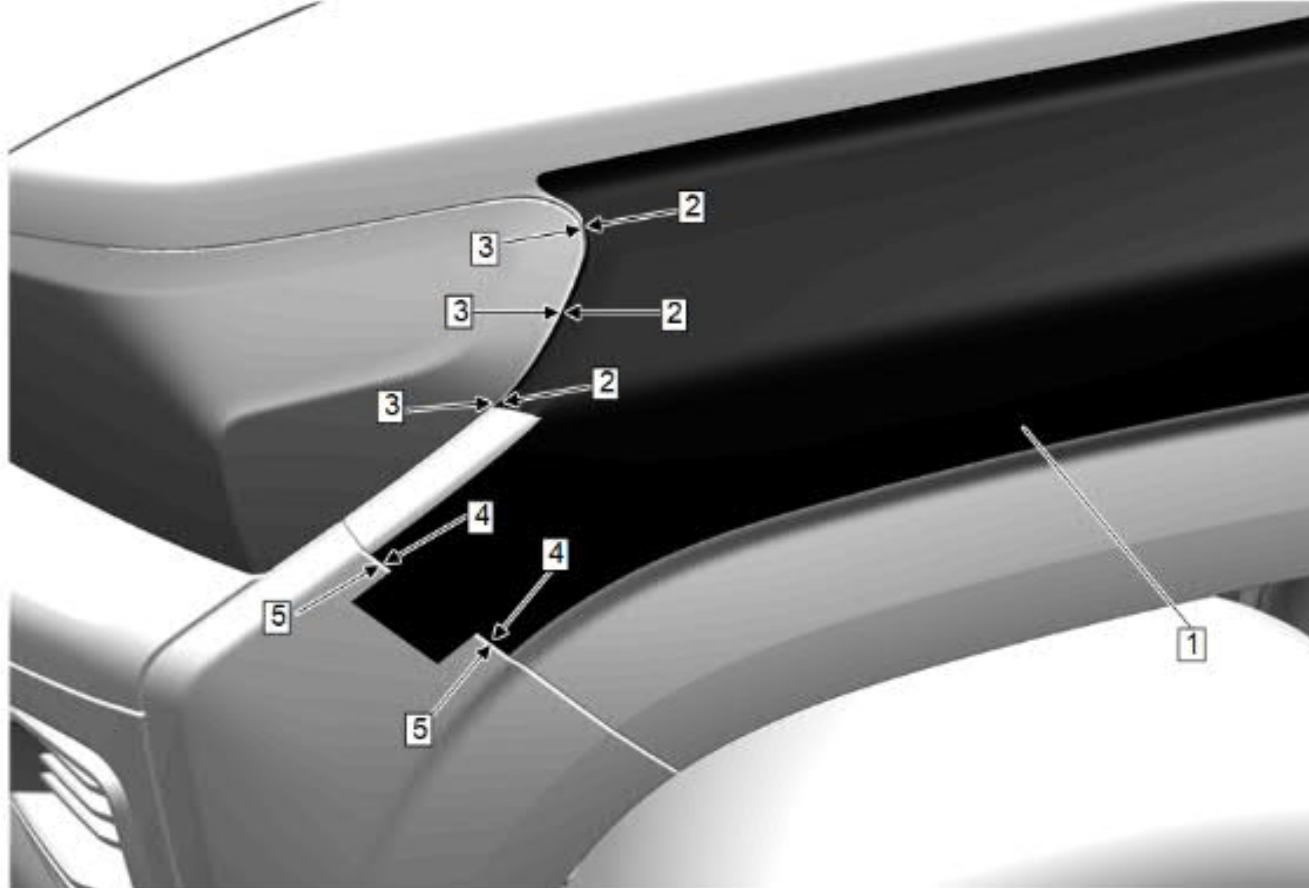
1. Use the surfactant to saturate the area (1) where the decal is to be applied.



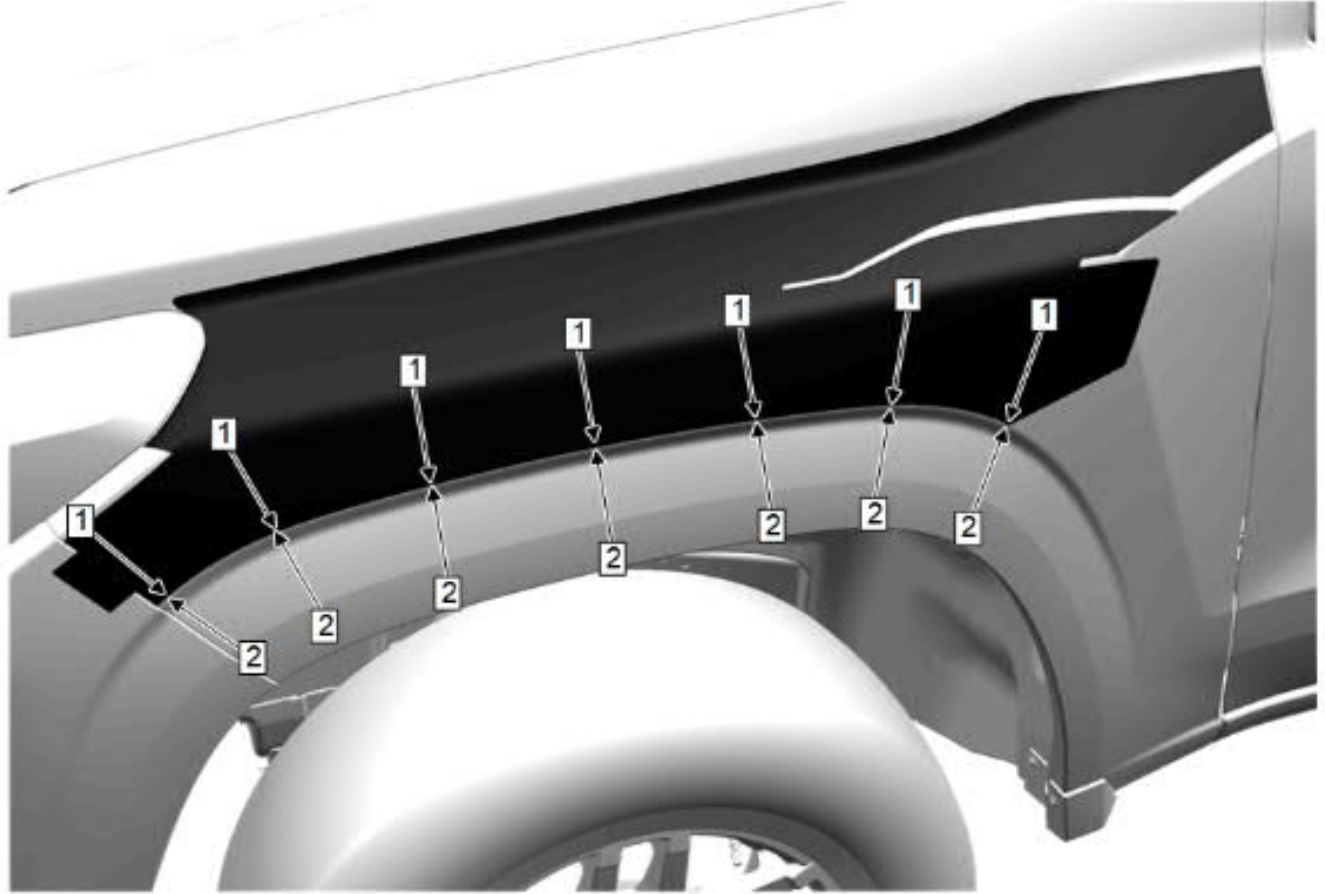
2. Lay the decal upside down on a flat surface and slowly remove the liner (2) from the decal (1) without bending the decal, the adhesive side of the decal will now be exposed.



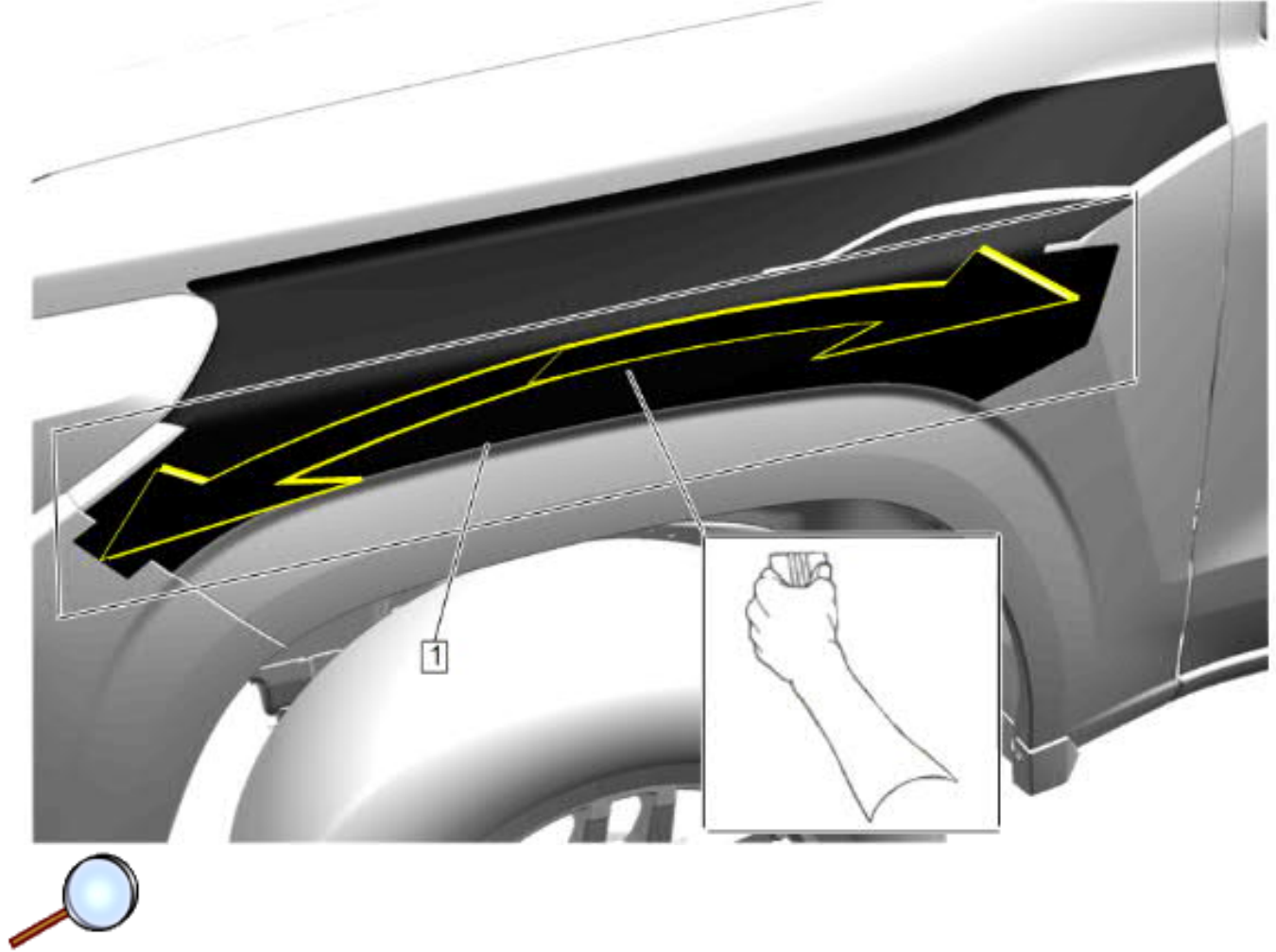
3. Saturate the adhesive side of the decal (1).



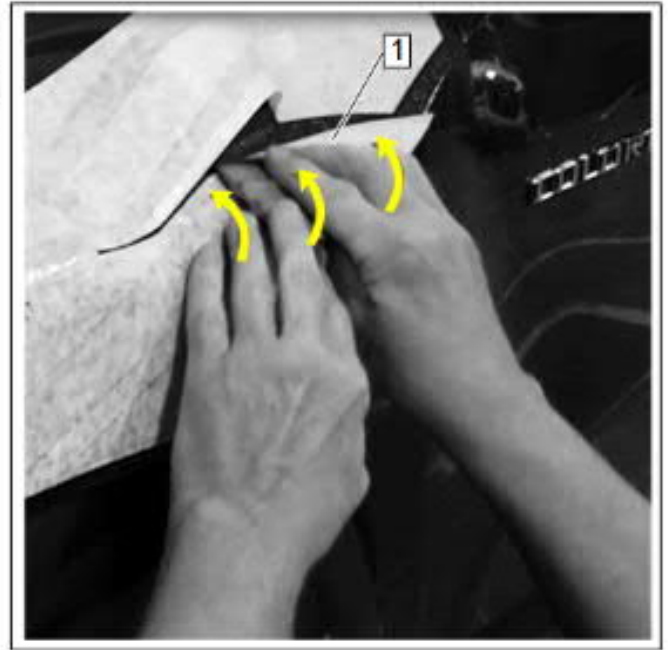
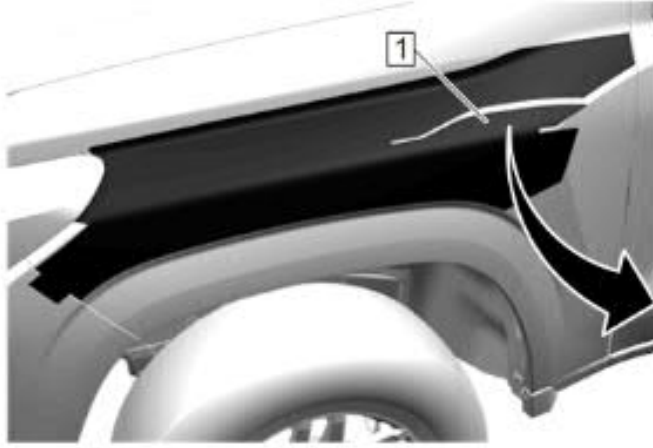
4. Carefully lift the decal (1) from the surface and lay the adhesive side onto the front fender panel.
5. First align premask (2) to the panel edge for the head lamp opening (3) and then align premask (4) to the front fender panel cutline (5), (this is most important). This positions the decal fore/aft.



6. Align the bottom of the premask (1) along the fender/wheel well feature line (2), this is critical that the premask follows along the edge. This positions the decal top/bottom direction on the panel.



7. Spray the lower half of the premask (1) with surfactant.
8. Use the plastic squeegee to press the lower half of the decal into place beginning at the center and working towards the sides using firm overlapping strokes.



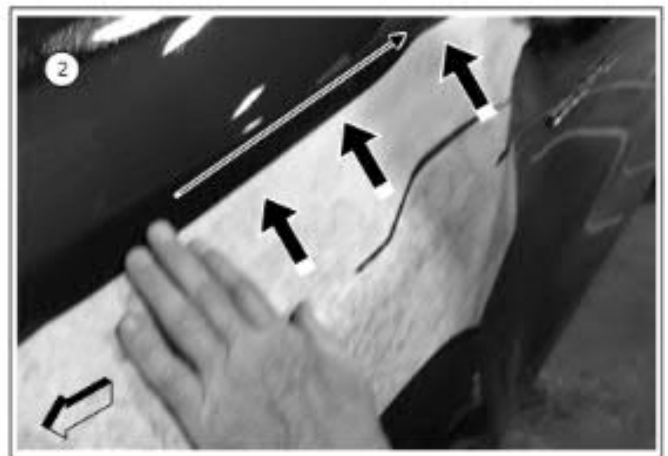
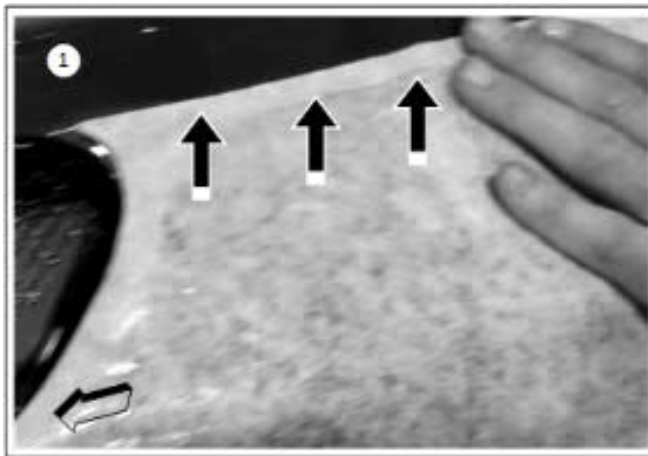
9. Now press into place the area where the decal (1) is cut. Pressing in the upward direction over the curve in the panel working towards the end of the decal (towards the door).



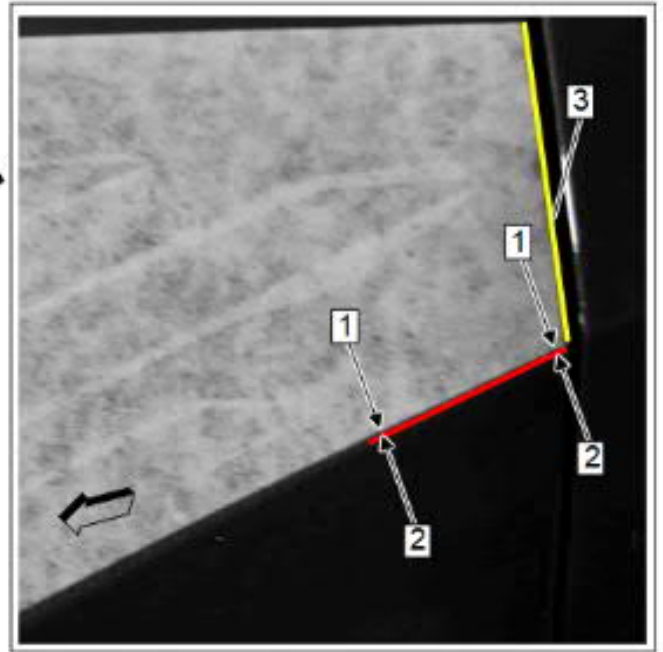
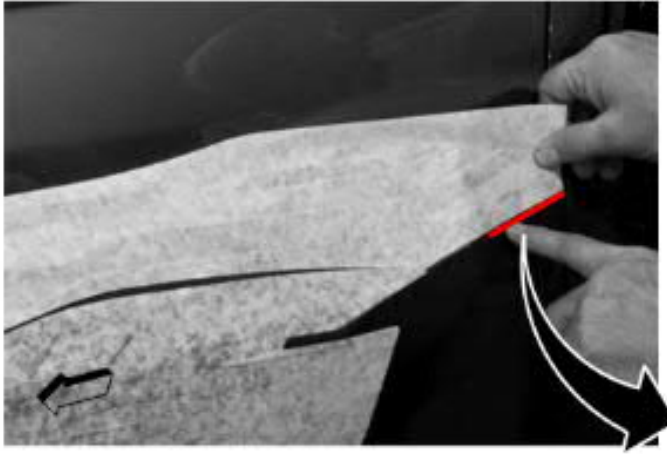
10. Placement of the upper half: Lift the upper half of the decal (1) and lay it back down on the panel to reposition in its proper location.



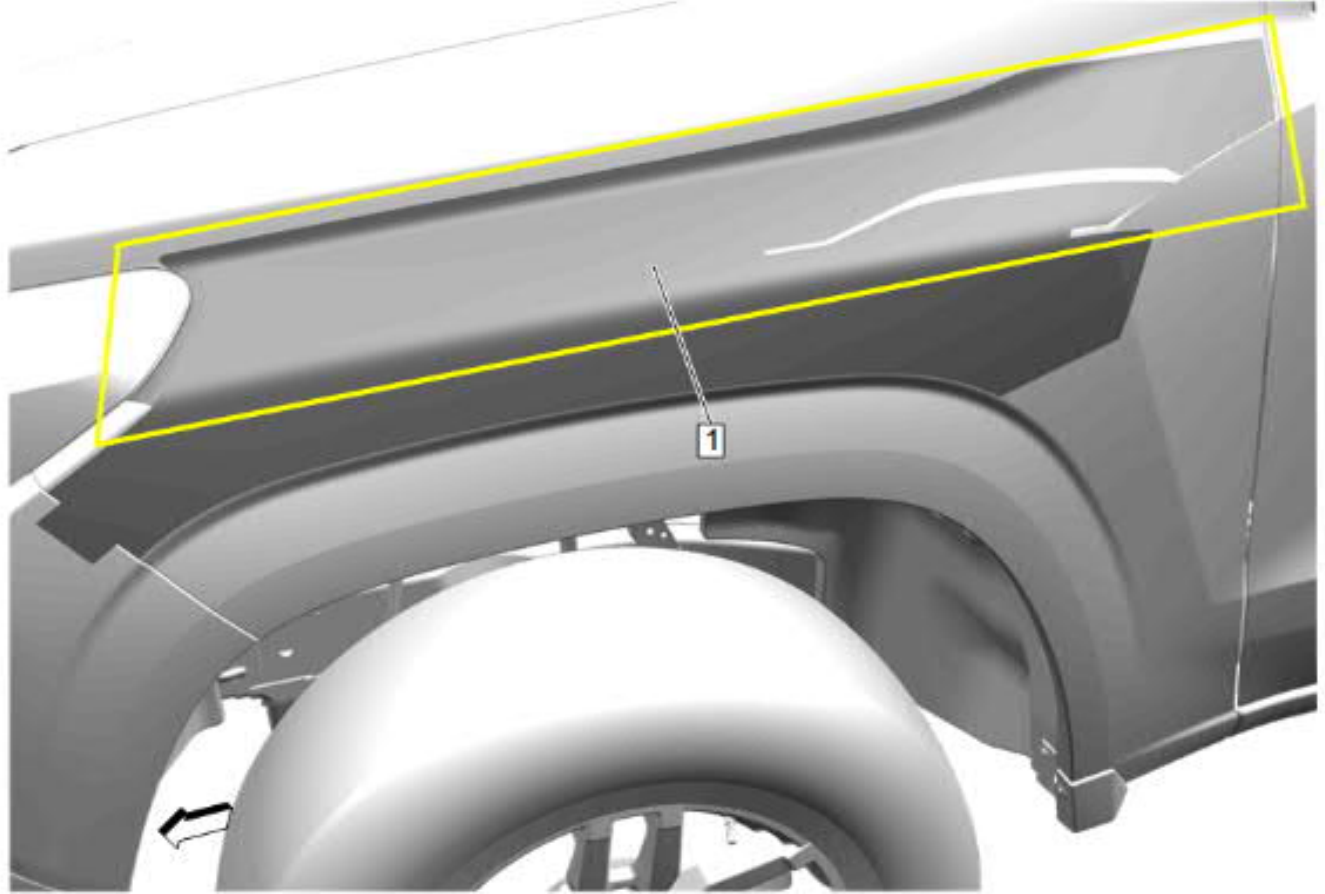
11. With your hands push the decal (1) upwards on the panel due to it might bunch in the circled area.



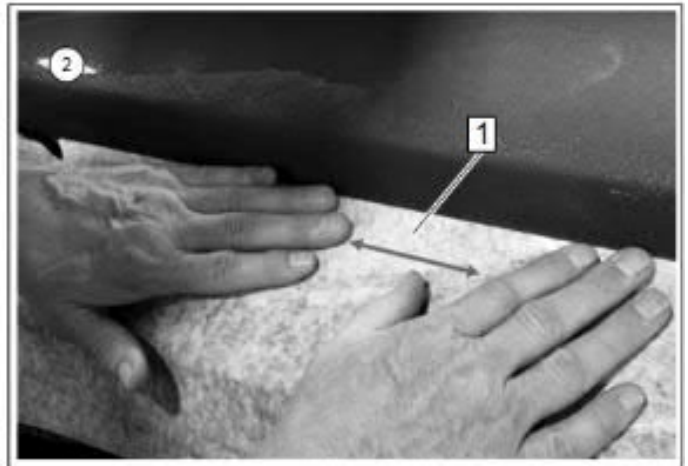
12. Continue to push upwards on upper decal towards door, making sure decal is not bunching up.



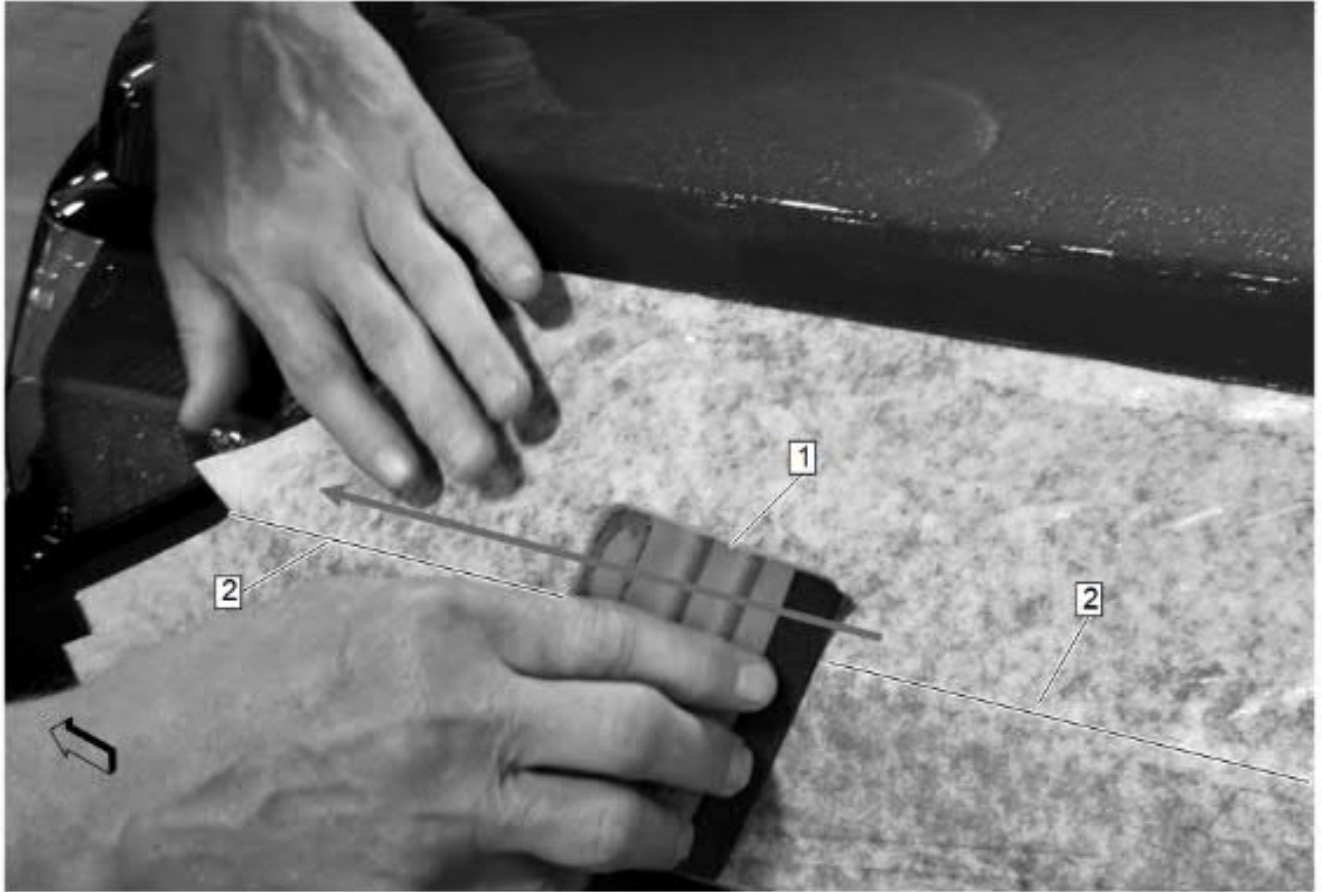
13. Align the lower premask (1) to the feature line (2), Rear feature line (3) is not as critical.



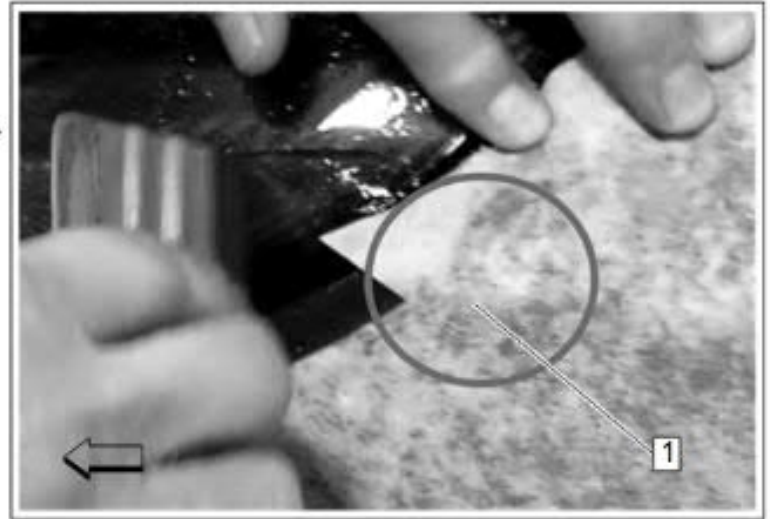
14. Spray surfactant to the upper premask surface (1).



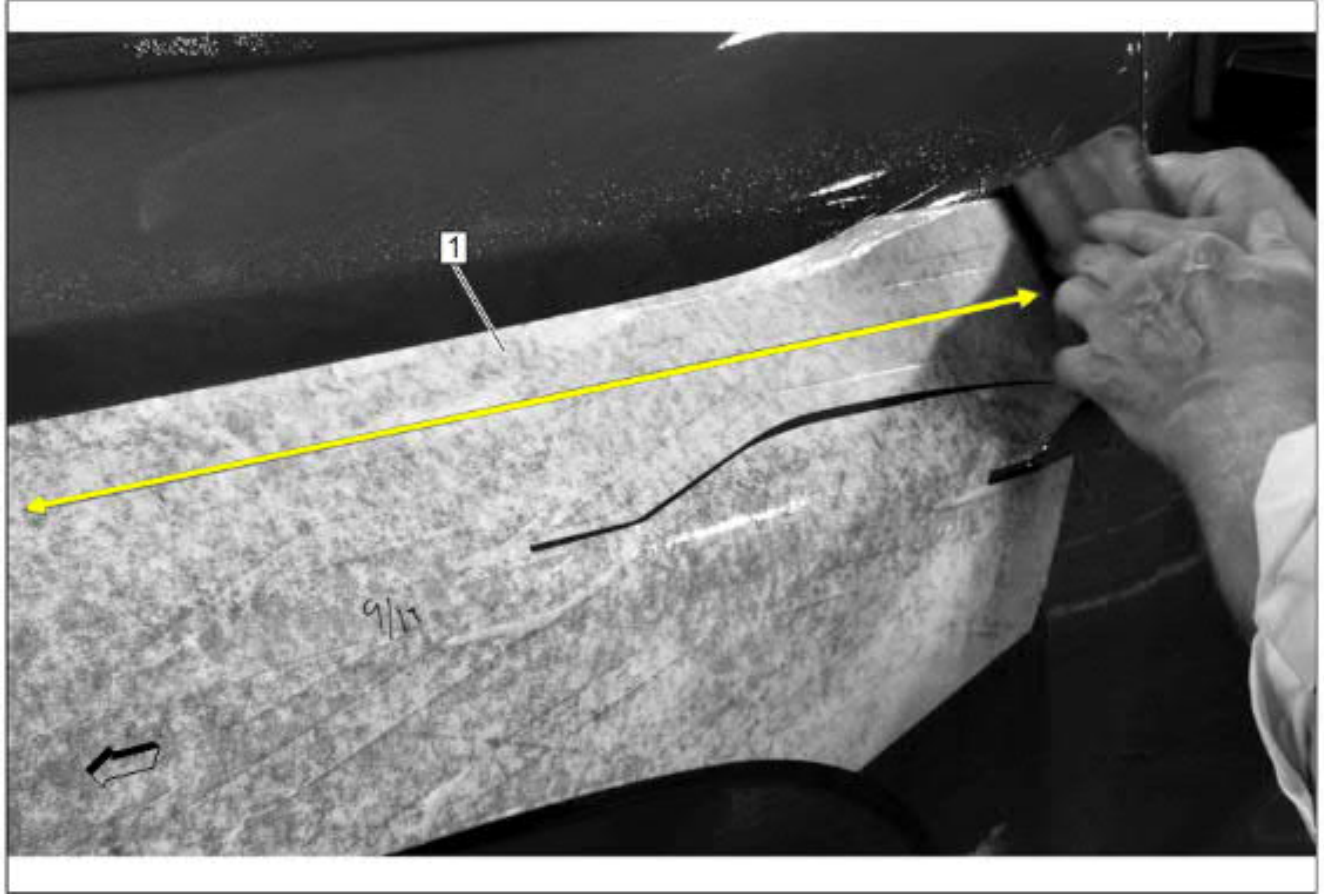
15. If you have bunching to decal (1) as shown graphic, take both hands and pull decal apart to smooth it out.



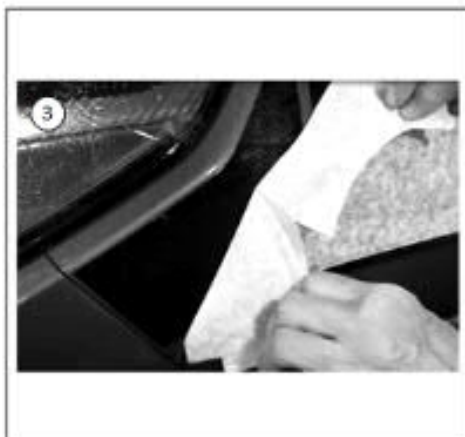
16. Use squeegee (1) to press decal along the radius (2) of the panel.



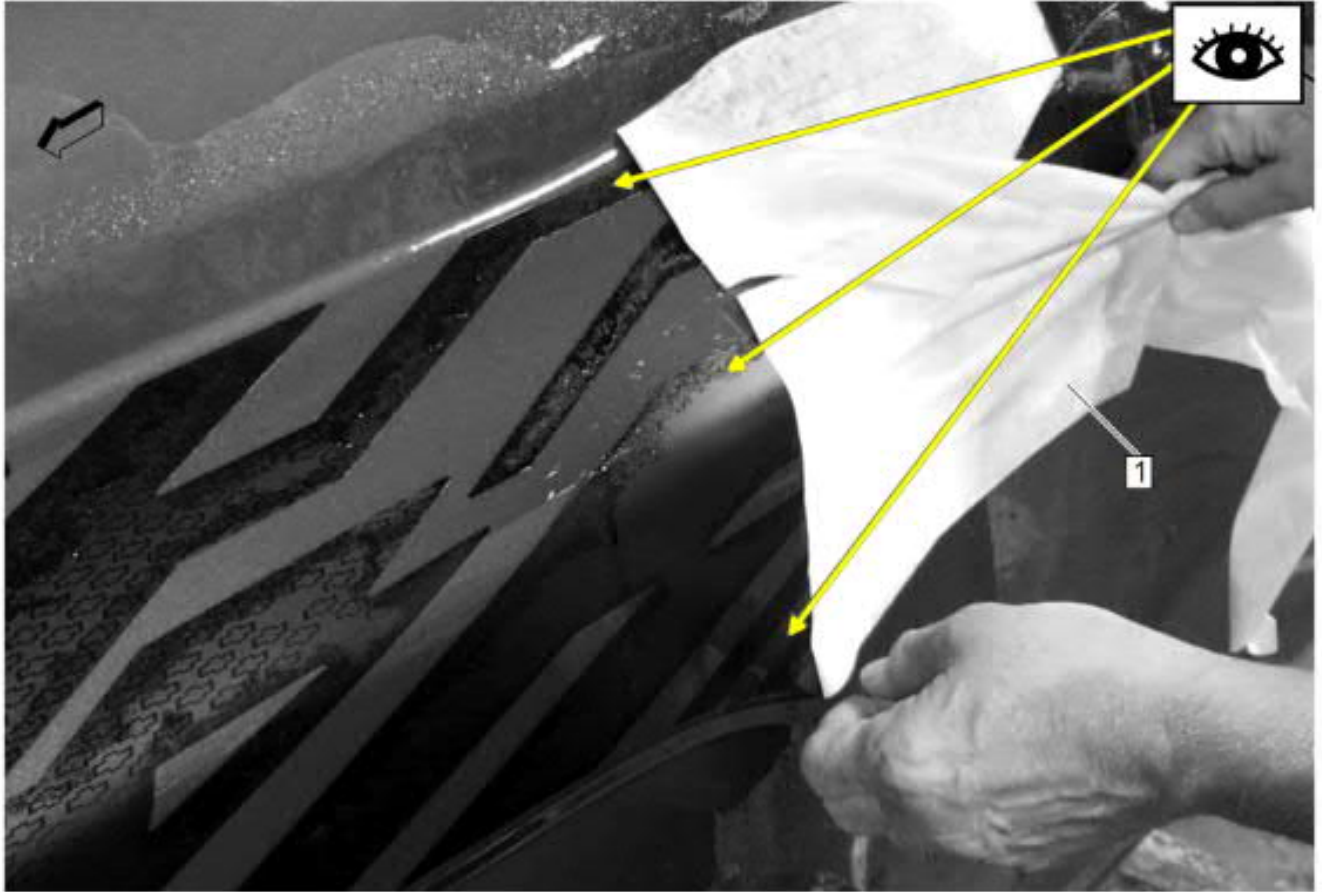
17. Hold the premask (1) taunt as you squeegee around the knuckle of the panel to avoid bunching.



18. Use the squeegee to press the decal (1) along the upper portion of the fender panel, using overlapping strokes.



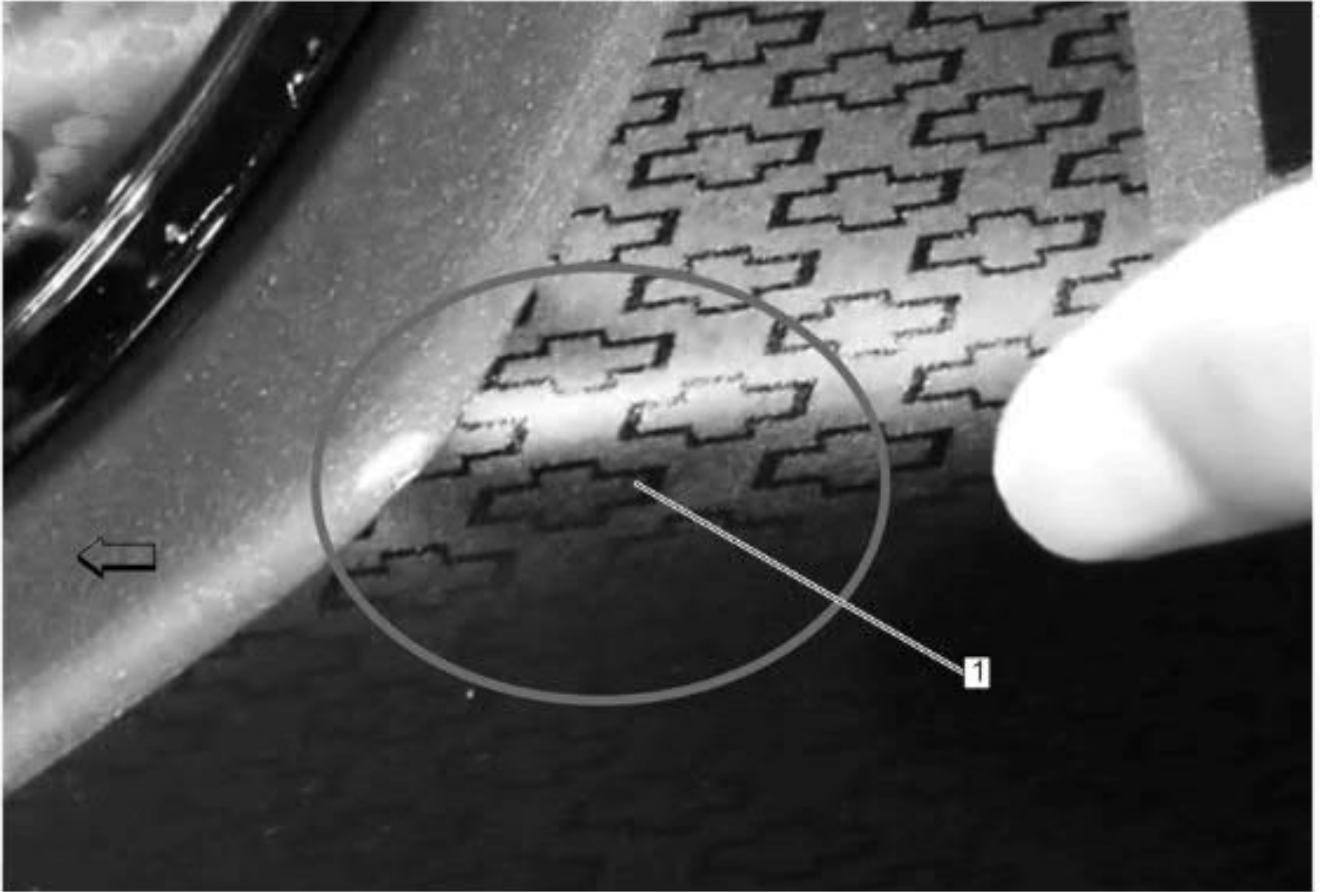
19. Slowly remove premask (1) starting with the upper corner and work your way forward being careful of the knuckle area that will want to lift.



20. Keep an eye across the panel where you are removing the premask (1) to make sure small decal elements are not sticking or lifting with the premask causing it to be out of position.



21. Wipe off excess water by dabbing not rubbing the decal with the lint-free cloth.
22. Inspect decal for bubbles, raised edges, and make sure critical areas are straight and in proper placement as they could have moved/lifted during the premask removal.
23. Due to the texture of this decal the wrapped squeegee will not glide easily on the surface, use fingers to push bubbles to the edges of the decal. It is advised on the thin areas to use fingers only to ensure proper placement while pressing down to get out the extra surfactant to promote adhesion. If bubbles still remain and need more force applied, then wrap the squeegee with a lint-free cloth, re-spray decal with surfactant and re-press decal into place while checking alignment.
24. Clean off residual surfactant with lint-free cloth by dabbing dry (wiping motion can lift corners or move decal out of position before setting).



Caution: Use extreme care when using a hair dryer! DO NOT get too close to decal or heat too quickly as it will damage the decal. Apply heat evenly across the decal edge.

25. Look at the knuckle of the panel for the decal (1) lifting. This is expected in this area and is recommended to use a hair dryer to warm up the material so it will settle around the panel curve by applying pressure using your thumb. Heat from a hair dryer (3-5 seconds at 4"-6") can assist in allowing the decal to become more flexible. DO NOT OVERHEAT!
26. Fender decal installation complete.

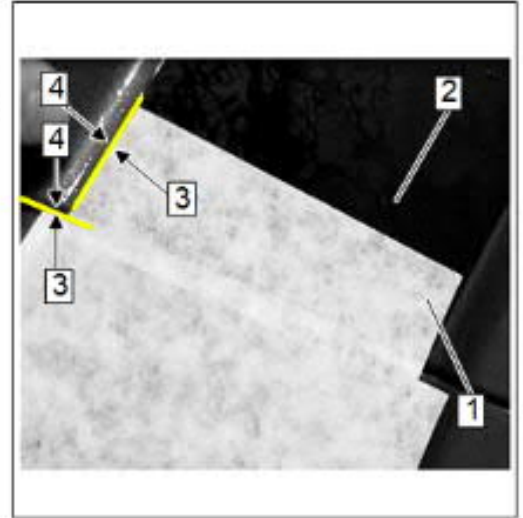
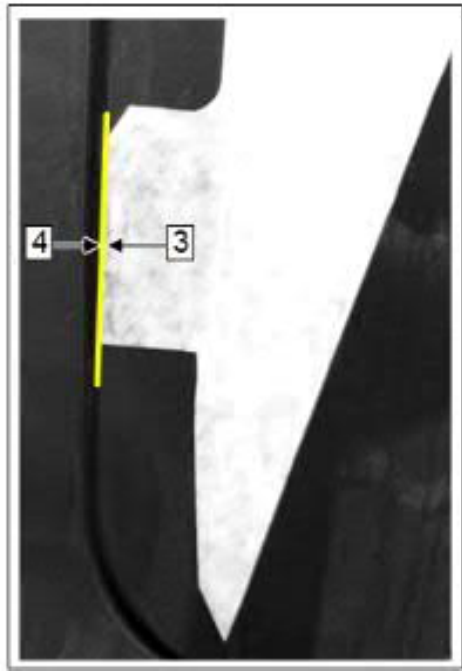
Note: After a decal installation has been completed, do not high pressure wash the vehicle for 72 hours.

Front Fascia (Cheek) Decal

1. There are two variations combined on the same part that can be separated by perforation. Determine if the vehicle is a ZR2 or not, the ZR2 part is marked "ZR2", separate the correct part to install using the perforation and discard the other part not being used.



2. Spray lower fascia panel area (1) with surfactant.
3. Remove release liner and spray adhesive side of decal with surfactant.



Note: Premask extension (1) overlays to align with the edge of the black decal (2) of the adjacent panel.

4. Carefully position the adhesive side of decal to lower fascia panel area, making sure to align the premask (3) to the feature lines (4).



5. Spray with surfactant then press decal (1) into place with plastic squeegee.
6. Use the plastic squeegee to press the decal into place beginning at the center and working towards the sides using firm overlapping strokes. If necessary, slightly lift the decal when approaching the ends (to minimize wrinkling).



7. Spray surfactant onto the premask to ease in removal.
8. Remove premask (1) starting with the lower point by pulling it off at 180 degrees, being careful not to tear the decal.
9. Inspect decal for bubbles and raised edges.
10. Due to the texture of this decal the wrapped squeegee will not glide easily on the surface, use fingers to push bubbles to the edges of the decal. It is advised on the thin areas to use fingers only to ensure proper placement while pressing down to get out the extra surfactant to promote adhesion. If bubbles still remain and need more force applied, then wrap the squeegee with a lint-free cloth, re spray decal with surfactant and re-press decal into place while checking alignment.
11. Clean off residual surfactant with lint-free cloth by dabbing dry (wiping motion can lift corners or move decal out of position before setting).
12. Do a final inspection of the entire decal installed for bubbles/lifting using a flashlight or lamp. Tip: Due to the pattern and low gloss, use a flashlight to look for bubbles and express using fingers.
13. Fascia decal installation complete.
Note: After a decal installation has been completed, do not high pressure wash the vehicle for 72 hours.
14. Repeat same process for fender and fascia decal on opposite side.