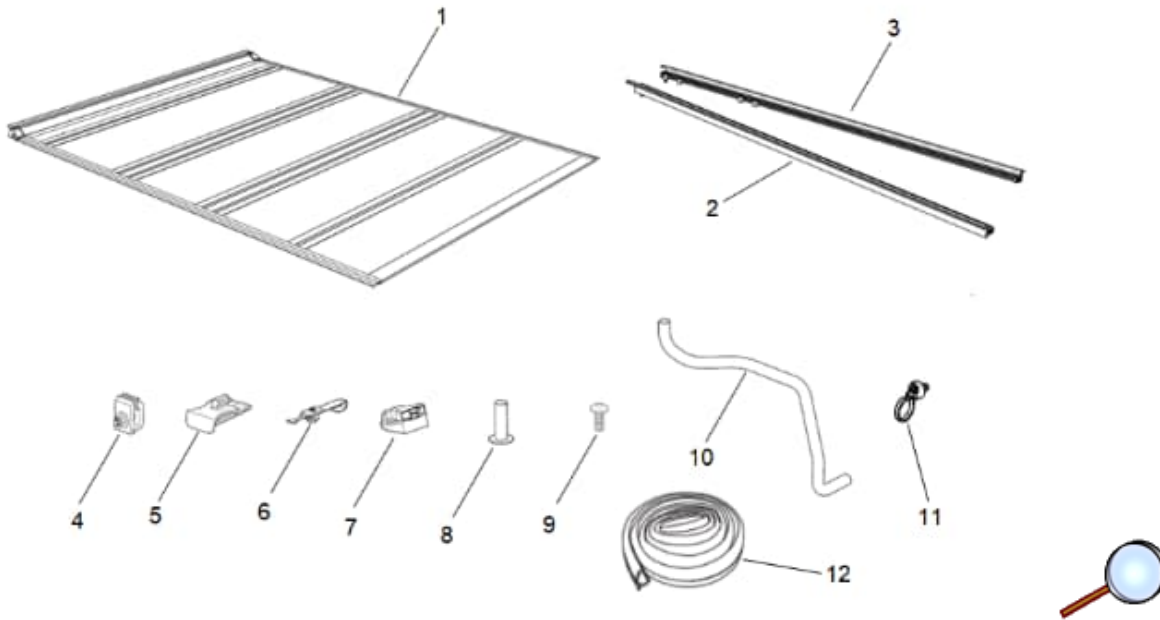


# Pickup Box Folding Top Cover Package Installation

## Installation Instructions Part Number

87842616



### Kit Contents

| Item | Qty | Description   |
|------|-----|---|
| 1    | 1   | Bed Cover   |
| 2    | 1   | Driver Side Rail  |
| 3    | 1   | Passenger Side Rail   |
| 4    | 6   | Clamp   |
| 5    | 4   | Header Guide  |
| 6    | 4   | Header Guide Retainer   |
| 7    | 2   | Buckle End  |
| 8    | 4   | Threaded Post   |
| 9    | 4   | Machine Screw   |
| 10   | 2   | Drain Hose  |
| 11   | 2   | Hose Clip   |
| 12   | 1   | Bulkhead Seal<br><b>(Not used on vehicles with Multi-Flex midgates)</b> |
| -    | 1   | Installation Instructions   |

## Tools Required

Suitable Cutting Tool

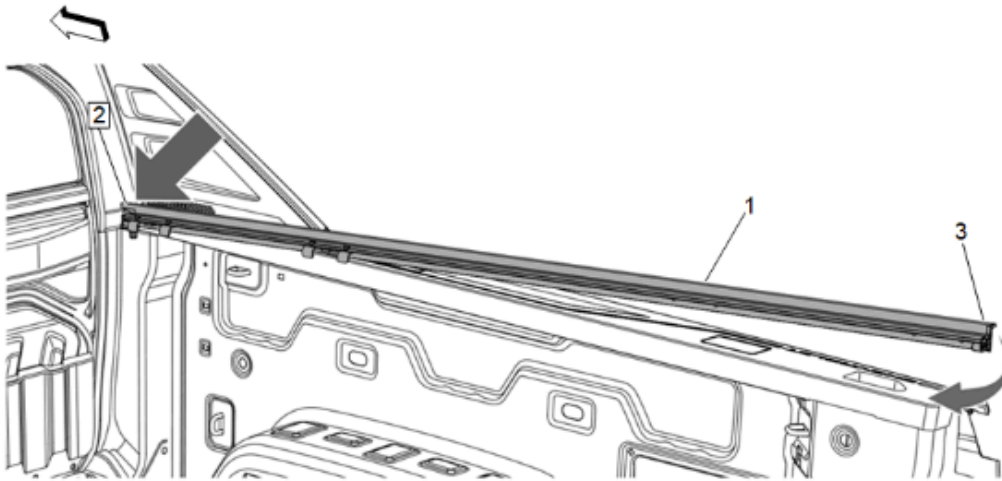
Ratchet or Wrench Set

Phillips Screwdriver

## Preparation

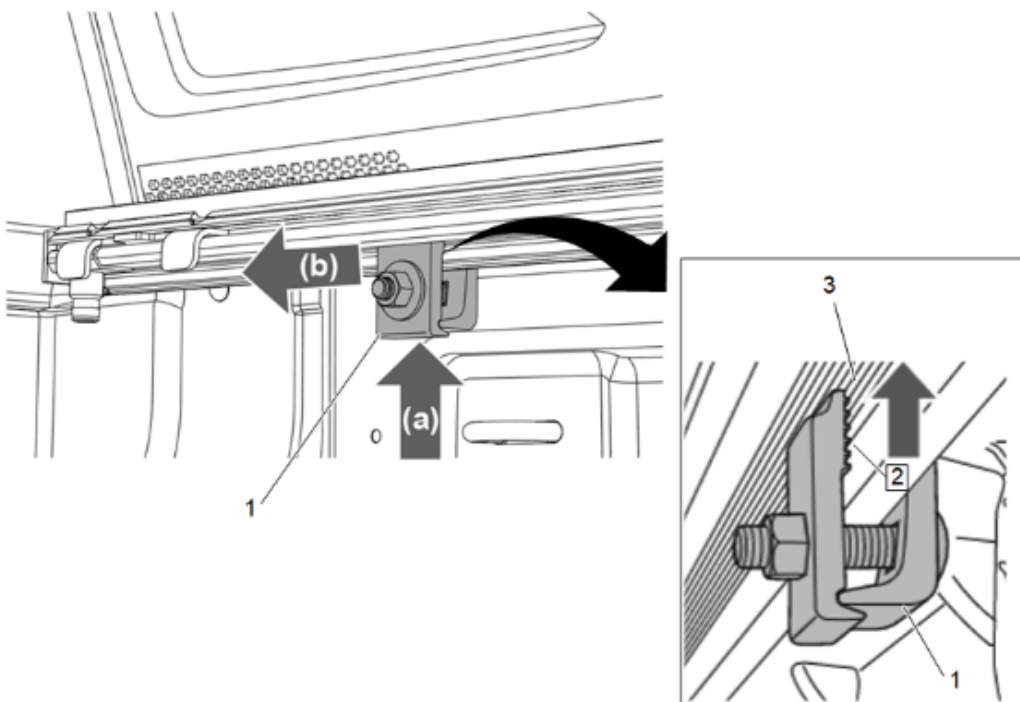
It is important that all areas where the bed cover mounts are clean and free of debris prior to installation.

## Procedure

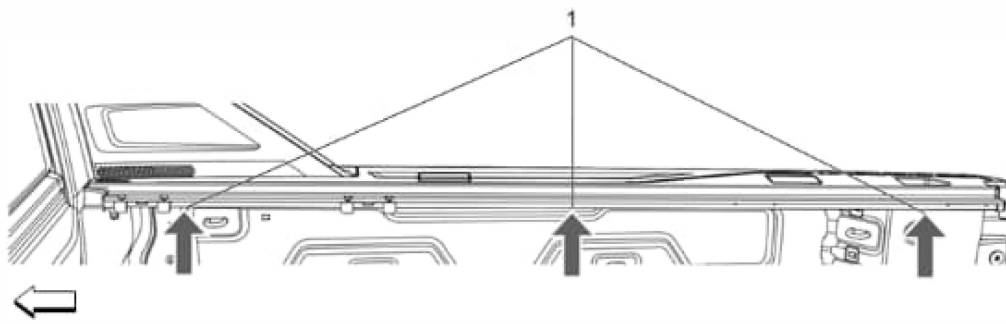


**Note:** Read all instructions before proceeding. It is recommended that two people install the tonneau cover.

1. With the endgate open, install the passenger side rail (1) by placing the slotted bracket (2) all the way forward toward the cab and the bulkhead, at an angle, then rotate the rear of the rail (3) on the bedcap as shown. Rail should be flat to bed cap and should appear to be level.

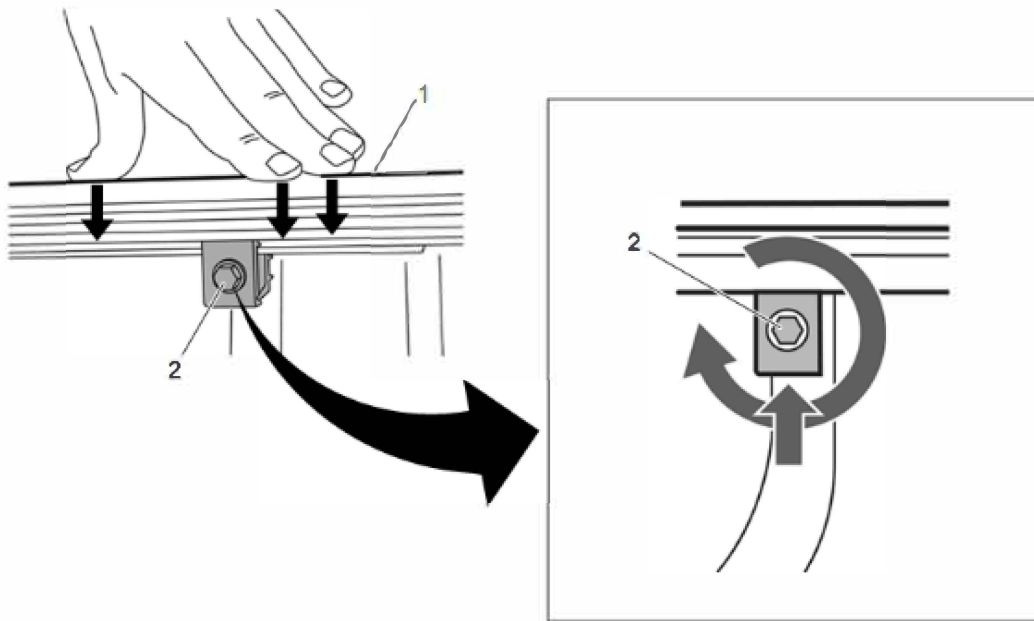


2. Take a loosened clamp (1) and install it under the passenger side rail (a) and then move it as far forward as possible (b), then hand tighten. Make sure the clamp is inserted all the way up into the rail and the clamp teeth (2) fit squarely and fully engage the ribs of the rail (3) to ensure a secure grip.



**Note:** Clamps (1) will be located in 3 equal places per side as shown.

3. Install the remaining clamps at the rear most and center location of the rail.



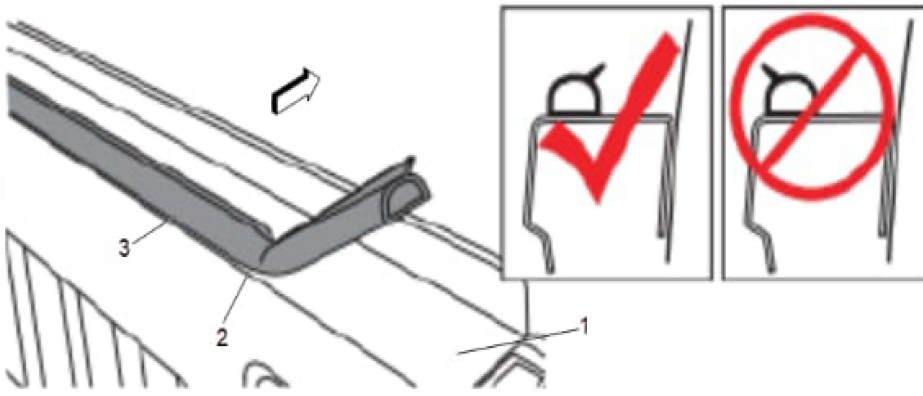
**Caution:** Use the correct fastener in the correct location. Replacement fasteners must be the correct part number for that application. Fasteners requiring replacement or fasteners requiring the use of thread locking compound or sealant are identified in the service procedure. Do not use paints, lubricants, or corrosion inhibitors on fasteners or fastener joint surfaces unless specified. These coatings affect fastener torque and joint clamping force and may damage the fastener. Use the correct tightening sequence and specifications when installing fasteners in order to avoid damage to parts and systems.

4. Using a 9/16" wrench or socket, tighten all clamps (2) until snug, then torque an additional 1/2 turn to 14 N.m (10 lb ft). Apply downward pressure to the rail (1) while tightening the clamp (2) to ensure the rail is flush to the bed cap and seals properly.

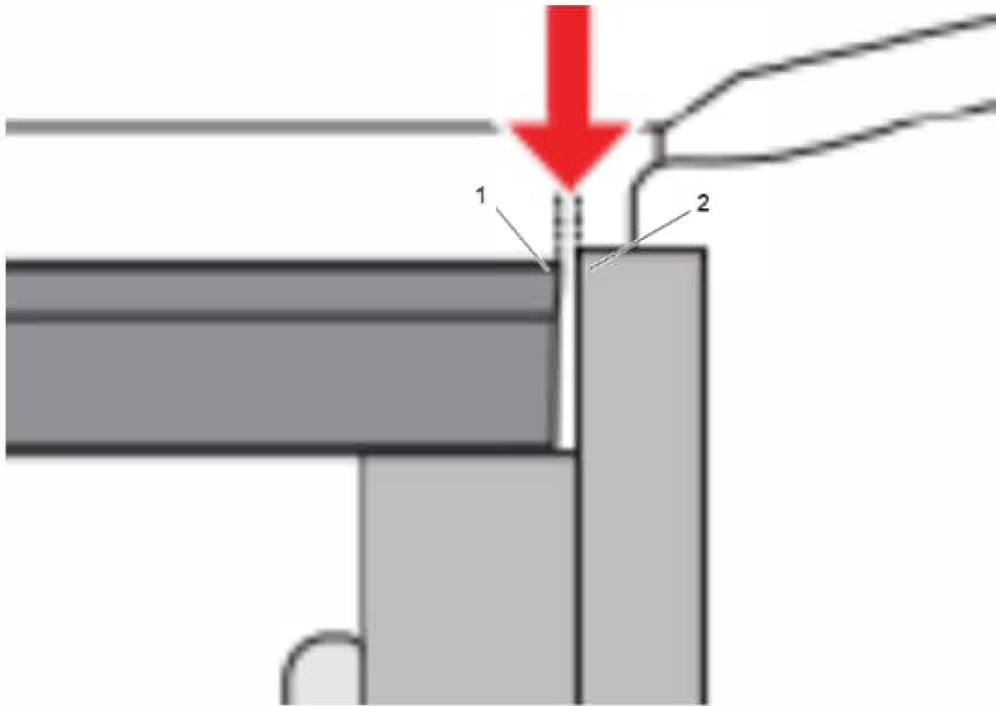
5. Repeat Steps 1-4 for the driver side rail.

**Note:** Clamp positions may be restricted by bed components or other accessories. Make sure the installation of clamps does NOT cause interference to those components.

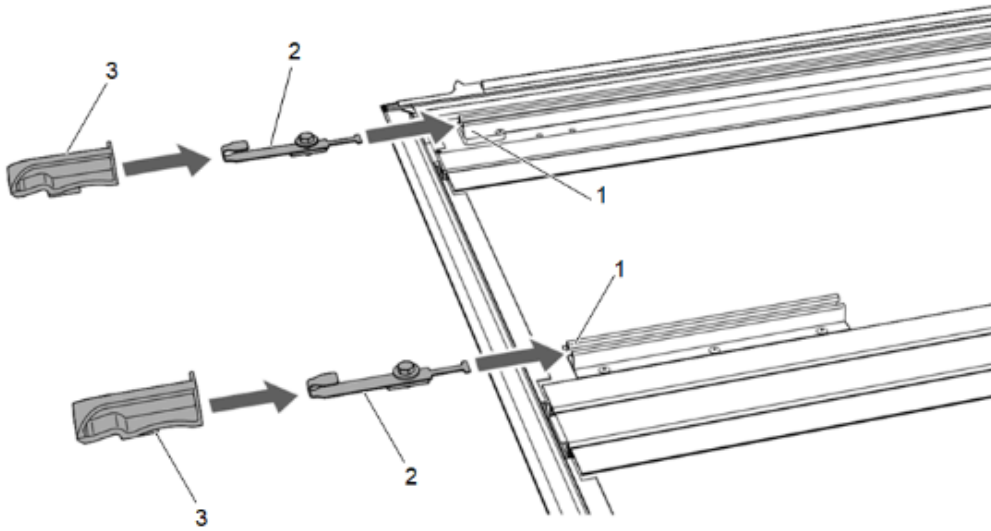
**Note: SKIP TO STEP 8 IF THE VEHICLE IS EQUIPPED WITH A MULTI-FLEX MIDGATE. BULKHEAD SEAL IS ONLY REQUIRED ON WORK TRUCK MODELS WITH FIXED FRONT BOX PANELS.**



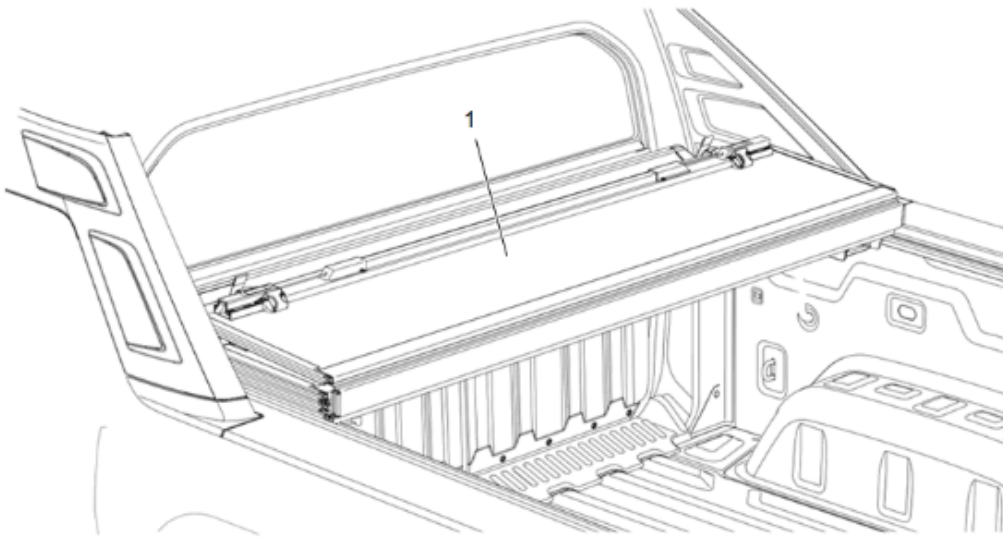
6. Clean the area (1) where the bulkhead seal will go with soap and water to remove dirt and debris. Then clean the area with isopropyl alcohol to remove wax or grease and to evaporate any remaining water. Allow surface to dry. Peel the backing off and position the bulkhead seal (3) at the edge of the bed opening (2), as close to the inside of the bed as possible. Apply pressure to the entire seal to make sure the adhesion is good.



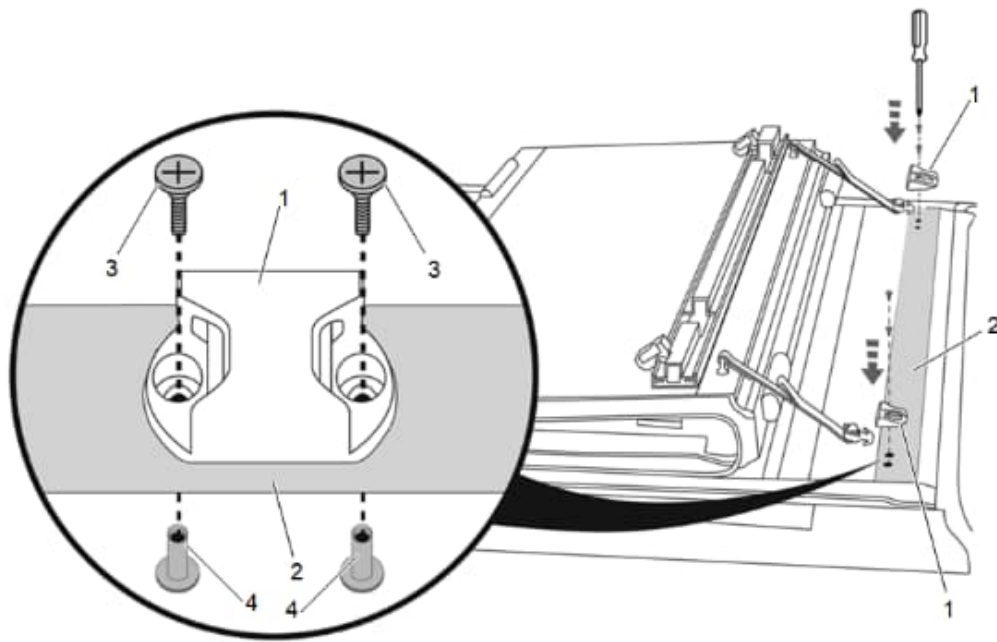
7. Bulkhead seal (1) should be trimmed so that there is a 1/8" - 1/4" gap to the rail (2). This will allow water to flow into the provided rail system to help with water management.



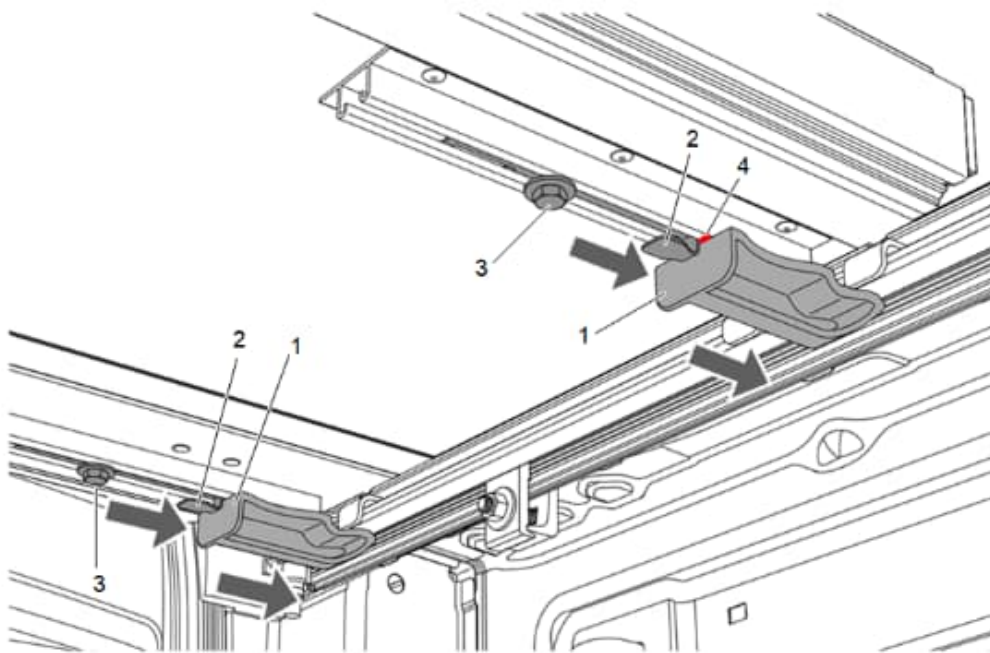
8. Install the header guide retainer (2) and header guide (3) into each rail (1), on the underside of the cover, as shown. Do this on both sides of the cover.



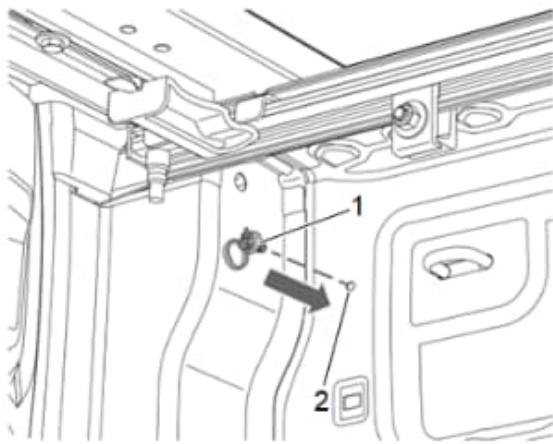
9. With the aid of an assistant, set the bed cover (1) in the folded position on the rails towards the front of the vehicle bed.



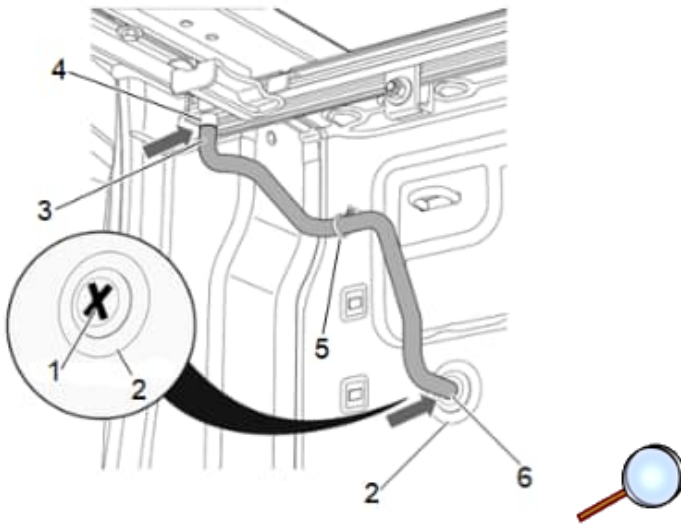
10. Position the buckle ends so the open side faces the bed cover panel. Use a screwdriver to install the two buckle ends (1) into the pre-drilled holes on the front header panel (2) with the provided machine screws (3) and threaded posts (4). **DO NOT** use a screw gun; securely tighten by hand only.



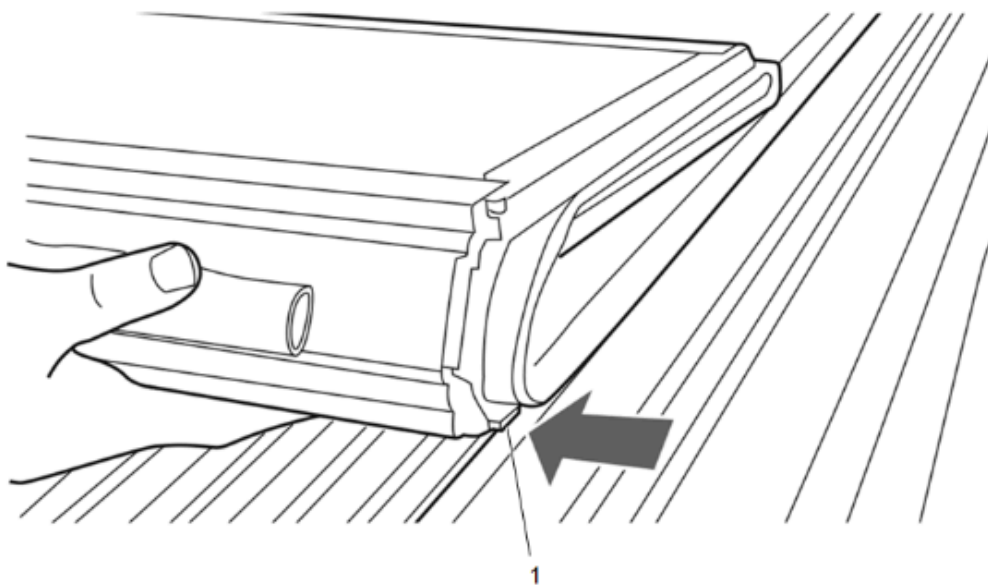
11. Push the header guide (1) outward towards the rail until it stops. Push the header guide retainer (2) outward until it stops against the back of the header guide (1). Using a 1/2" wrench or socket, tighten the header guide retainer bolt (3) until snug, then torque an additional 1/2 turn to 14 N.m (10 lb ft). A scribe line (4) on the tonneau underside will show you the general location of where the header guide and header guide retainer should be located.



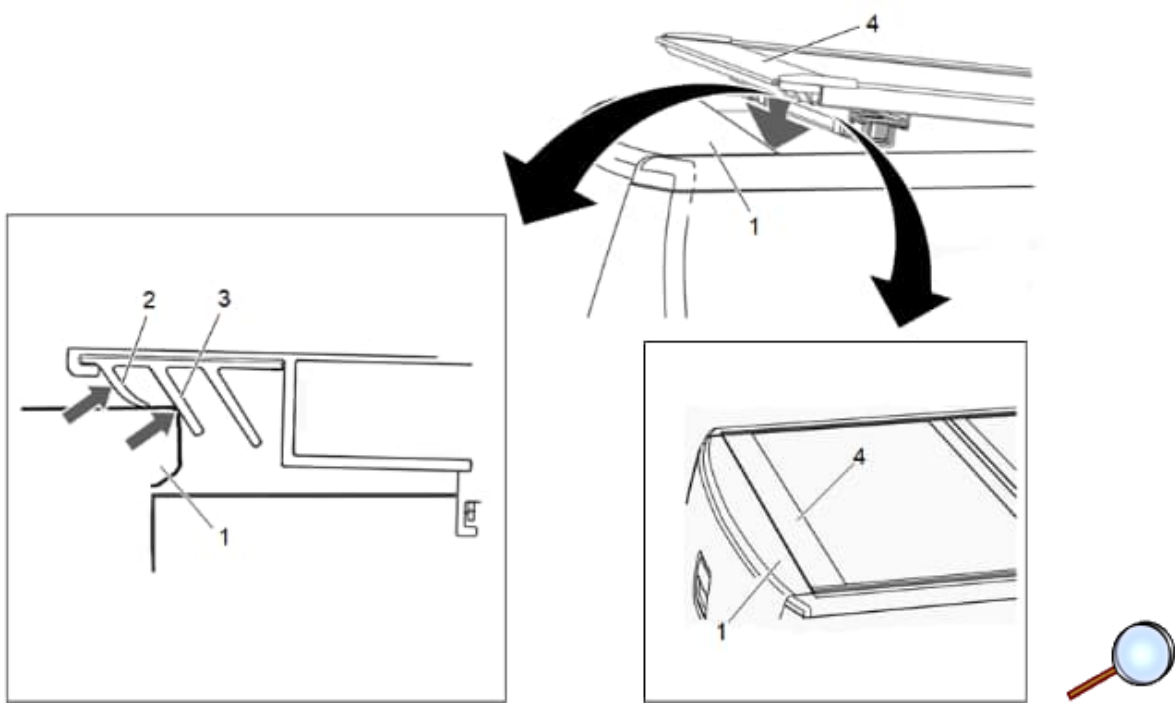
12. Install the hose clip (1) into the hole (2) as shown. Repeat for opposite side.



13. Using a suitable cutting tool, cut an X pattern (1) into the drain plug (2). Attach one end of the drain hose (3) to the front end of the rail (4). Route the other end of the drain hose (6) through the X in your drain plug (6). Once you have a favorable route, attach zip ties (5) wherever else desired. Repeat for opposite side.



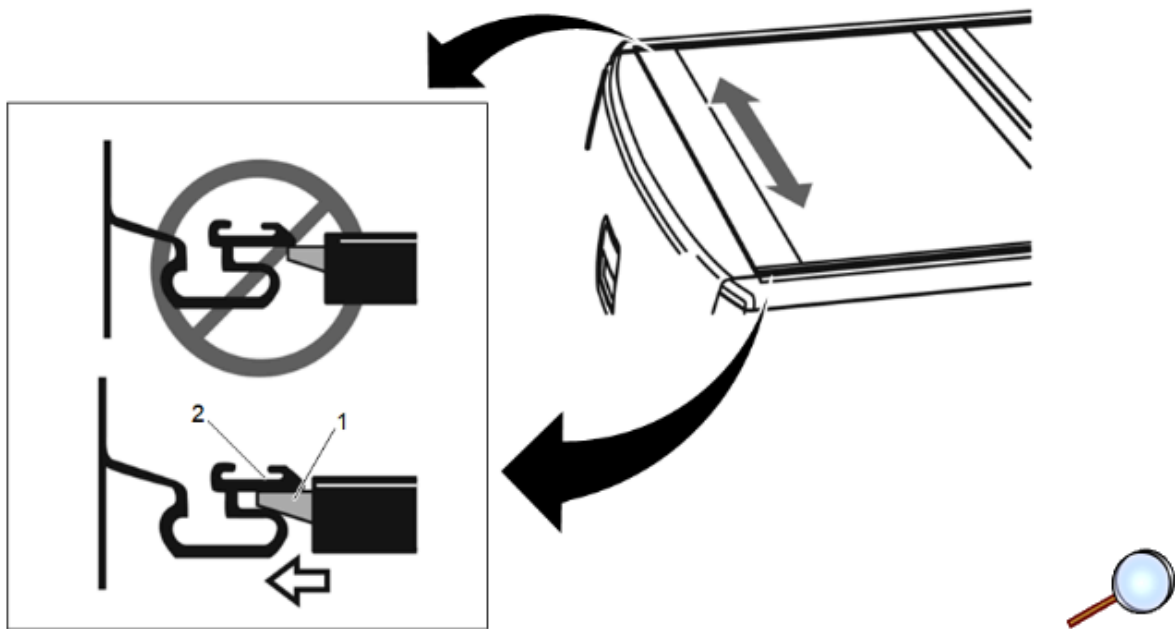
14. Unfold the cover towards the endgate. Make sure the cover (1) fits squarely between the rails.



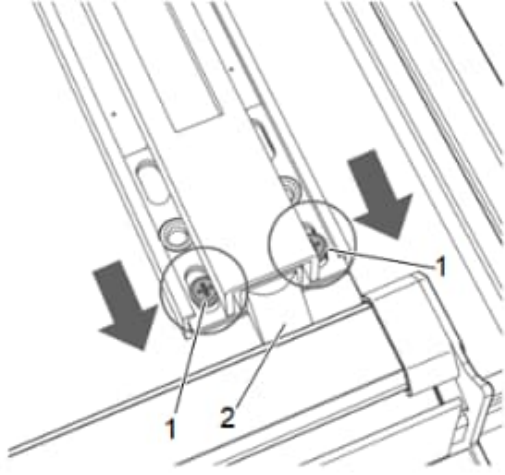
15. Verify that the endgate functions properly and that the seal aligns with the endgate.

16. With the proper alignment, the first fin (2) and 1/2 of the middle fin (3) of the endgate seal will be engaged with the endgate (1).

**Note:** The rear edge of the cover (4) and endgate seal should rest on top of the endgate (1).



17. Check to see that the cover panel latches (1) make proper contact with the side rails (2). If adjustments are needed, loosen the lock knobs and shift the cover slightly until proper latch engagement is achieved. Then retighten the lock knobs.



18. In some cases the latch will need to be adjusted to achieve proper latch contact with the side rails. There are two factory installed screws (1) on each side of the latch (2) that should be loosened by hand only, then the latch slid outboard and retightened. This may need to be done on both the passenger and driver side latch.
19. Installation complete. Owners Manual should be provided to the customer and a demonstration of the product should be performed.