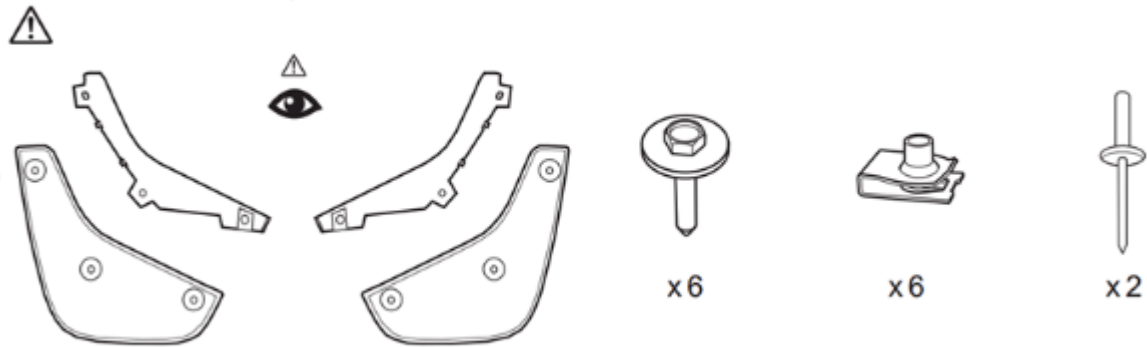


Rear Mud Guard Package Installation (Instruction ID: 42809662)

[Installation Instructions Part Number](#)

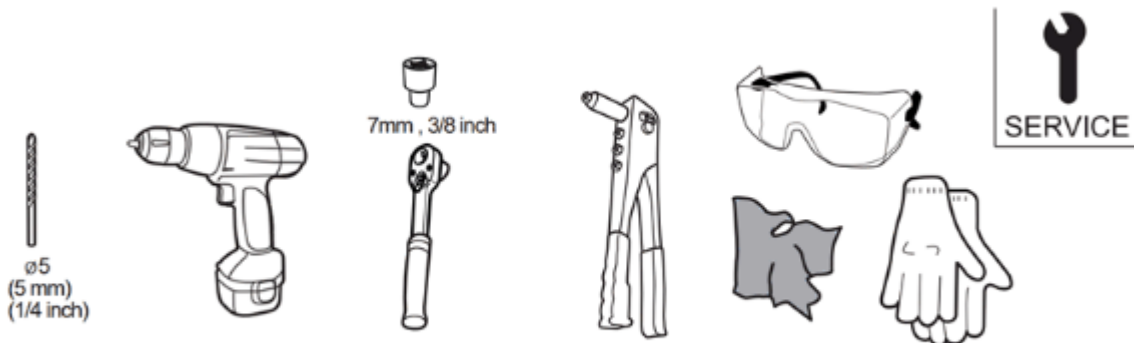
42809662

[Kit Contents](#)



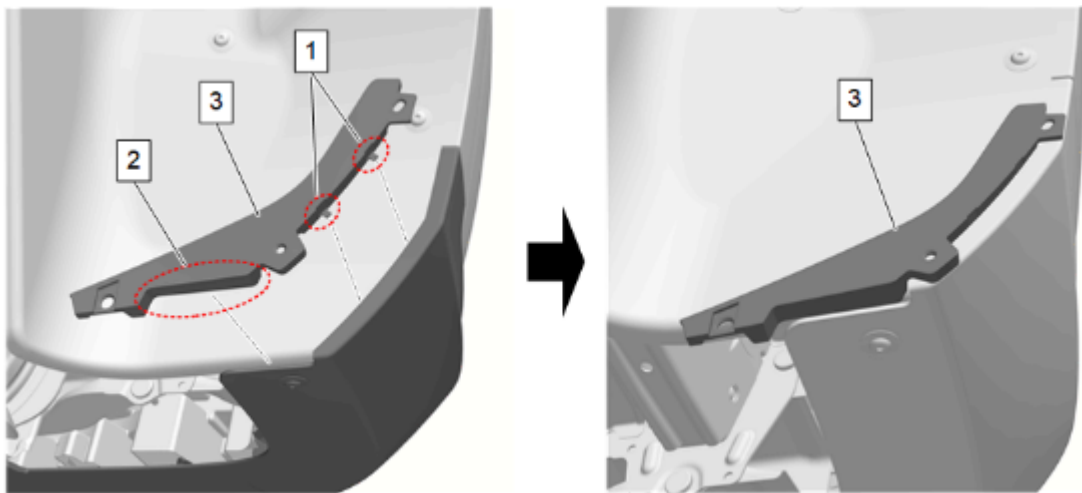
© 2024 General Motors. All rights reserved.

[Tools Required](#)

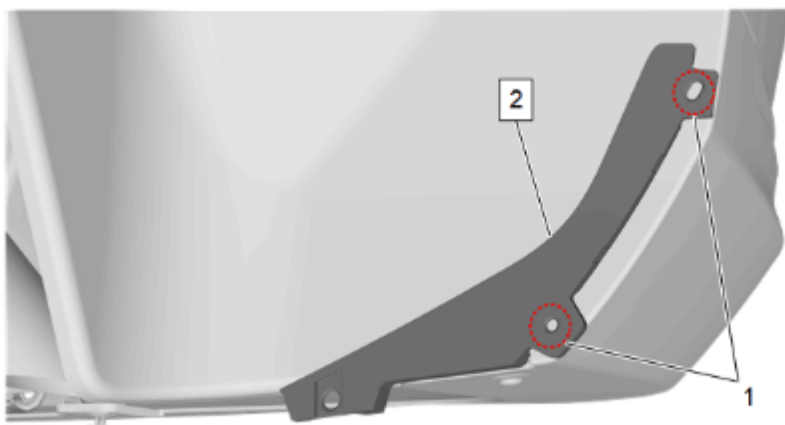


[Procedure](#)

1. Remove the rear tire and wheel assembly. [Tire and Wheel Removal and Installation](#)

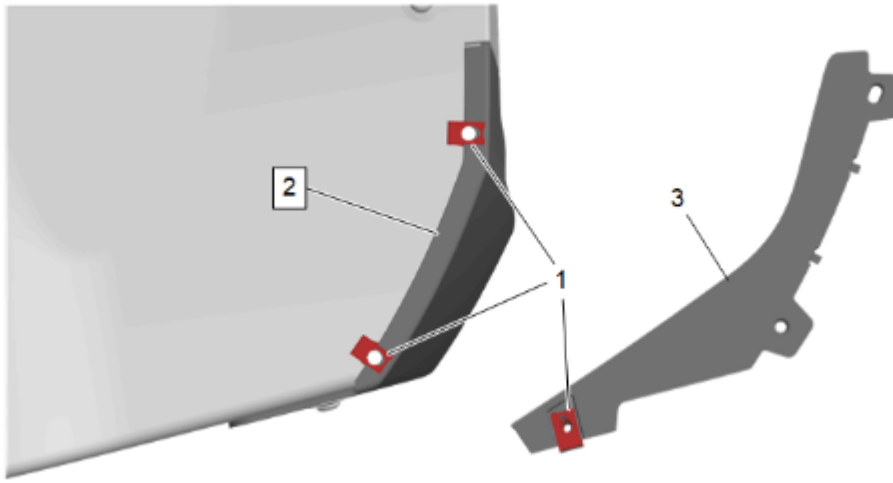


2. Insert the retaining tabs (1) of the rear mud guard bracket (3) between the rear bumper fascia and rear wheelhouse liner.
3. Align the bottom (2) of the rear mud guard bracket (3) with the rear wheelhouse liner.

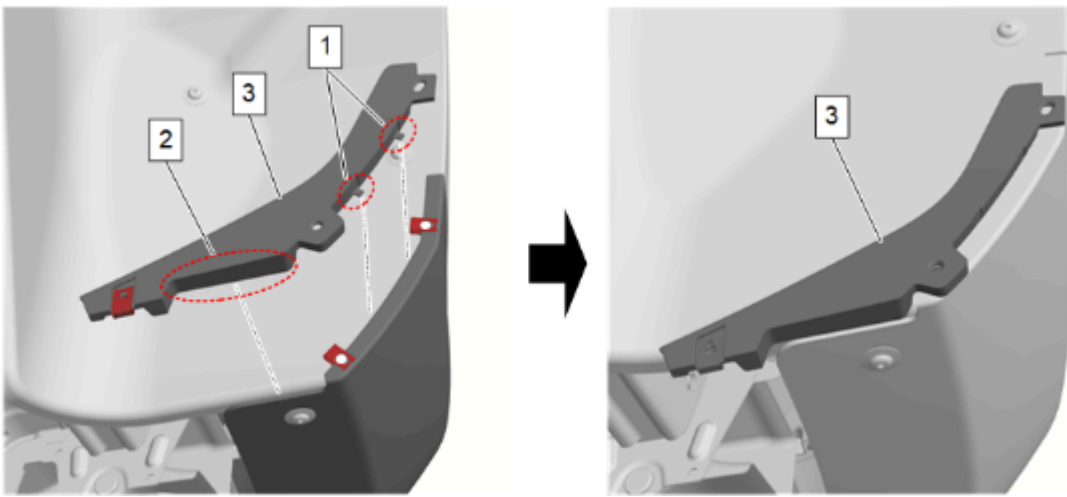


Warning: Approved safety glasses and gloves should be worn when performing this procedure to reduce the chance of personal injury.

4. Using a 1/4 inch (5 mm) bit, drill two holes through the rear bumper fascia and rear wheelhouse liner at the marked hole locations (1) on the rear mud guard bracket (2).
5. Remove the rear mud guard bracket (2) after drilling.

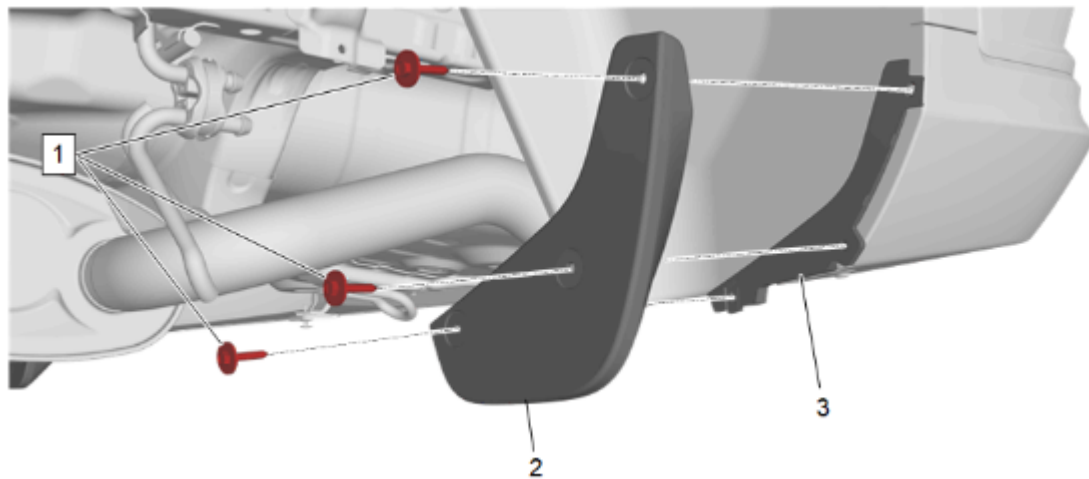


6. Install the three nuts (1) at rear bumper fascia (2) and rear mud guard bracket (3).

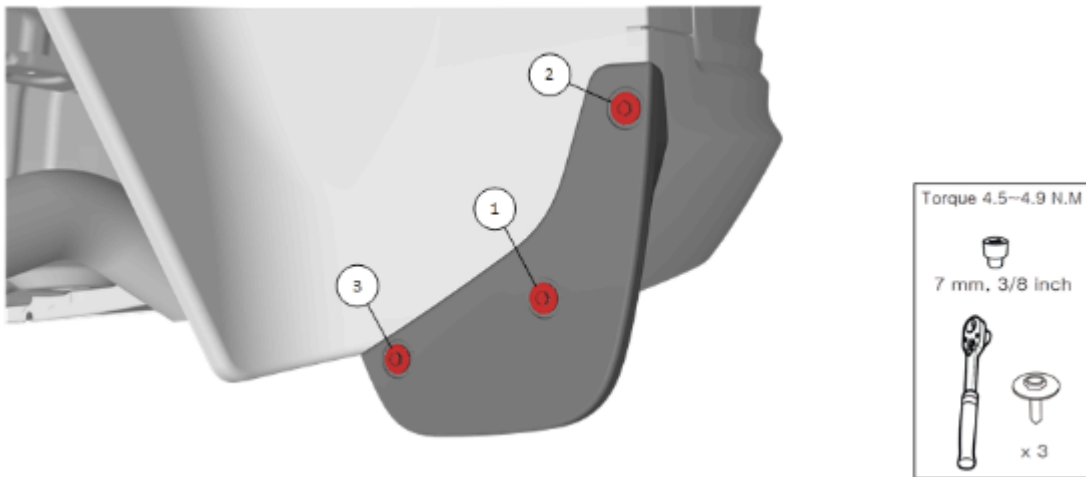


7. Insert the retaining tabs (1) of the rear mud guard bracket (3) between the rear bumper fascia and rear wheelhouse liner.

8. Align the bottom (2) of the rear mud guard bracket (3) with the rear wheelhouse liner.

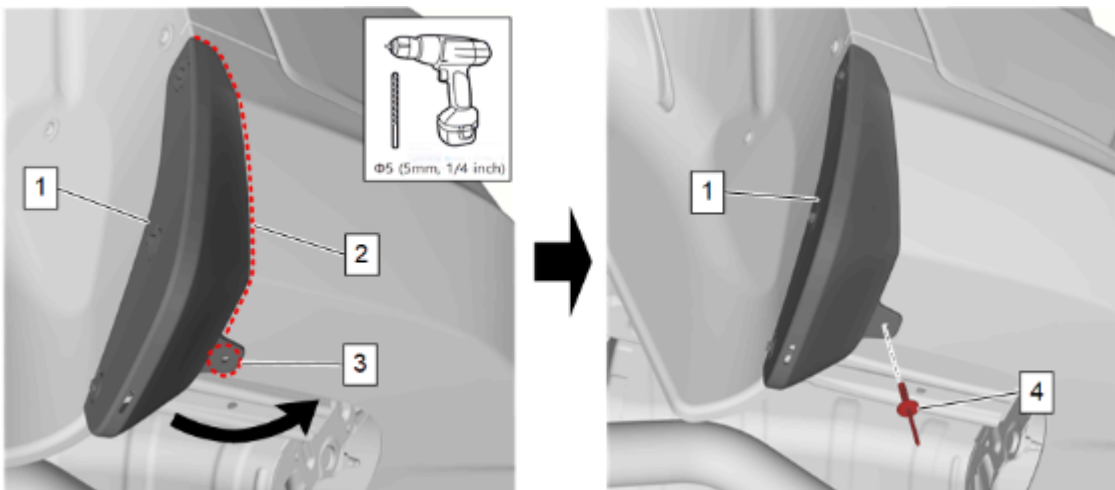


9. Using rear mud guard screws (1), Install the rear mud guard (2) to the rear mud guard bracket (3)



Caution: Use the correct fastener in the correct location. Replacement fasteners must be the correct part number for that application. Fasteners requiring replacement or fasteners requiring the use of thread locking compound or sealant are identified in the service procedure. Do not use paints, lubricants, or corrosion inhibitors on fasteners or fastener joint surfaces unless specified. These coatings affect fastener torque and joint clamping force and may damage the fastener. Use the correct tightening sequence and specifications when installing fasteners in order to avoid damage to parts and systems.

10. Tighten the rear mud guard screws to **4.5 N·m (40 lb in) – 4.9 N·m (43 lb in)** in the order of the numbers in the graphic.



11. Pull the rear mud guard (1) in the direction of the arrow by hand.
12. Be aware that gap (2) between rear mud guard and rear bumper fascia.
13. Using a 1/4 inch (5 mm) bit, drill a hole through the rear bumper fascia at the rivet hole location (3) on the rear mud guard.
14. With the rear mud guard (1) pulled by hand, Install the rivet (4).
15. Install the rear tire and wheel assembly. [Tire and Wheel Removal and Installation](#)